

Racine County Farm Bureau

PO Box 5550 Madison, WI 53705

Address Service Requested

Non Profit
Organization
US Postage
PAID
Platteville, WI 53818
Permit No. 124




For information about our farm safety campaign, contact your local Rural Mutual agent.

Rural Mutual Agents in Racine County:

Edward Kalbas **Melissa Probst**
(262) 878-2418 (262) 558-4470

Linda Schopen - District Manager


Wisconsin Farm Bureau Federation




The Wisconsin Farm Bureau Federation invites you to attend
AG DAY AT THE CAPITOL
March 11, 2015
Monona Terrace Convention Center • Madison, WI

Schedule of Events:
11:00 a.m. Registration
11:30 a.m. Opening Program
11:45 a.m. Lunch
12:45 p.m. Legislative Briefing
3:00 p.m. Leave for Capitol Visits

Early Registration Deadline: March 5
Cost: \$25 per person by registration deadline.
\$30 after deadline and at the door.

Presented by: 

Thank You to Our Sponsors:



Ag Day at the Capitol is the largest gathering of farmers from across the state representing a variety of farm groups to learn more about state issues and meet with their state legislators.

Capitol visit scheduled from 3 to 4 p.m. in room 328NW.

Please RSVP by March 5 to Patti Roden at proden@wfbf.com, 262.689.1838.

Wisconsin Ag Women's Summit March 13-14

Women from the Wisconsin agriculture community are encouraged to attend the annual Wisconsin Ag Women's Summit at the Madison Marriott West in Middleton. The Wisconsin Ag Women's Summit is presented by Badgerland Financial, Wisconsin Farm Bureau Federation and University of Wisconsin-Extension. The purpose of the Wisconsin Ag Women's Summit is to connect women involved in all areas of Wisconsin's diverse agriculture community.

Go to wfbf.com/programmevents/womens-program/wisconsin-ag-womens-summit for the full schedule of events.

Register online by going to wiagwomenssummit.wordpress.com/register.

At press time, there was only one \$140 grant still available from the Women's Committee for a Racine County Farm Bureau woman to attend the March 13-14, 2015 Ag Women's Summit in Madison.

Please contact Marge Demuth at 262.878.2530 or 6marged@gmail.com immediately if you are interested. The program offerings are diverse, educational and entertaining.





COUNTYnews

RACINE COUNTY FARM BUREAU EDITION

95th WFBF Annual Meeting Highlights



Racine County delegates included Julian Popp, Marge Demuth, John Scott and Keith Jacobson.

The 95th WFBF Annual Meeting and YFA Conference that was held at the Kalahari Resorts in Wisconsin Dells was another success. There were a total of 475 YFA members and 700 attendees.

ysis. This was an excellent story of how he copes with his paralysis, does not feel sorry for himself and how Chad and his family continue to keep his elk farm thriving.

Monday morning, Steve Freese pointed out 2014 accomplishments:

1. Strategic Plan – Future of Farm Bureau
2. Women's Committee Restructuring
3. Implements of Husbandry
4. New Five Year Farm Bill

At the business resolutions session, Racine County delegates voted on the state and federal resolutions.

Also announced was that WFBF raised more than \$70,000 in funds for the Ag in the Classroom Programs. Various fundraisers held were the Wisconsin Ag Open, YFA raffle, trivia contest and 40 by 40 campaign.

Both Saturday and Sunday afternoon, Farm Bureau members had the opportunity to attend workshops. Interesting topics included The Threat to the Agricultural Sector, which was conducted by a CIA investigator; Hot Topics in Ag; Don't Let Meetings Drive You Crazy; Farming with Technology; and Writing Your Stories presented by Jerry Apps.

Saturday evening, Roger Radley, who was noted as the Funniest Former Farmer was the entertainment. It was a show that kept everyone laughing.

Sunday morning, we listened to motivational speaker, Chad Hymas, whose topic was "Who Needs Legs When You Have Wings." Chad was a 27-year-old elk farmer when a 2,000 pound bale fell on him and broke his neck leaving him a quadriplegic.

"It is not about I," Chad said. "It is go and help someone without being asked."

Chad mentioned that this was his 3,379th conference since his paral-



Racine County Farm Bureau participated in the trivia contest on Sunday evening at the 95th WFBF Annual Meeting.



WFBF President Jim Holte congratulated John Scott for being a Producer Club member.



WFBF President Jim Holte congratulated Keith Jacobson for being a Producer Club member.

Racine County Farm Bureau: 877.432.9489

wfbf.com/countyfarmbureaus/racine

INSIDE THIS ISSUE:

- 2 District YFA Updates
From the President
Meet Your YFA Chair
Sharpen the Pencils
- 3 Donation to Food Pantries
Matching Grants
Women's Committee Chair
Outstanding 4-H Awards
YFA Spring Fling
Pizza and Bowling Event



District YFA Updates By Peter Muth, District 1 YFA Representative

I hope everyone had a great time at the YFA Conference. We had 475 YFA members present!

Mark Mayer from Ozaukee County won the Achievement Award contest and competed in San Diego, California, in the national contest. In the Discussion Meet, Waukesha County member Amanda Carlson advanced to the semifinals. Everyone representing District 1 did an outstanding job. If you see them be sure to congratulate them.

We have a busy year ahead of us with a lot of activities planned in the district.

District YFA Calendar of Events

April 11	Spring Fling at Circle B
April 26	Milwaukee Brewers Game
August 8	Mantz Brothers Concert at Roden Farm
August 18	Discussion Meet

Be sure to 'like' the Wisconsin Farm Bureau Federation Young Farmer and Agriculturist Program on Facebook.



Many District 1 members attended the YFA Conference.

From the desk of the President... By Keith Jacobson

Hi fellow Farm Bureau members,

I hope everyone had a good winter season and are now looking forward to spring arriving.

We've had some added prep this year with the new farm bill and the trend of lower markets on the horizon. But just as no two hands of sheephead are never the same, no two growing seasons are ever similar.



Racine County Farm Bureau President Keith Jacobson and District 1 Director Dave Daniels.

So to those of us that farm for our livelihood, this is nothing new. We know that the only sure thing in life is that things will change.

I'm sure, by the time you read this, you are well aware of the activities that took place at the annual 95th WFBF convention in December. The last *Rural Route* covered events and proceedings thoroughly. I want to add how impressive the YFA Conference has become.

Not only is it well-attended, but the sessions and activities are very good. A job well done by Wisconsin Farm Bureau. I would urge our younger members to check it out next year. I know the first weekend in December is a busy time, but your attendance would be rewarding, not only for the activities, but for the new friends that you will meet.

This should be an interesting year in Washington, D.C., because of the executive branch and legislative branch being controlled by opposite parties. Add in a supreme court that leans conservative, but can go either way and the possibility of some fireworks looms large.

I can only hope that the newly elected party in majority remembers that they were not elected

to compromise, but were elected to reverse the direction that Washington and government in general is heading.

Rest assured that Farm Bureau, as always, will be there representing farmers' interests and concerns.

I may sound like a broken record (some of us who are older may have to explain to younger members what exactly a broken record is), but I cannot stress enough the importance of memberships. We are unique and respected organization of farmers that is totally controlled by farmers!

I wish you all a successful season in 2015. But more importantly I wish everyone a SAFE season. We've lost a couple of good neighbors during the last few years in farm accidents and have had a few close calls. Farm accidents happen to us when we are tired and in a hurry so we all need to slow down and stress safety first.

When we make a living working with animals, machinery, chemicals and the weather, we can see why farming ranks as one of the most hazardous professions. So I wish everyone a safe and abundant 2015.

Meet Your New YFA Chair

Hi Racine County Farm Bureau! I am Scott Davel, I grew up in Waukesha County and although my parents didn't farm my passion for agriculture is HUGE! I started showing calves in 4-H for the Kipp family in North Prairie and since then have worked on many different dairies. I graduated from UW-Platteville with a dairy science emphasis and now work for Landmark Services Cooperative. As your new Young Farmer and Agriculturist chair, I would like to tell you about a few of the events coming up.



- **March 17** FREE Bowling event in Waterford
- **April 11** Spring Fling at Circle B in Cedarburg
- **April 26** Milwaukee Brewers game and tailgating
- **August 26** Wisconsin Farm Technology Days bus trip

If you would like to attend an event, please contact me at 608.445.0810, Scott.Davel@landmark.coop or find me on Facebook.

Look for the Racine County Farm Bureau and YFA Facebook page coming soon.

Get Those Pencils Sharpened!

Each year Wisconsin Ag in the Classroom offers an essay contest for fourth and fifth grade students in all public, private and home schools, including 4-H clubs, Farm Bureau families and other organizations.

The 2014-2015 topic is "Why Are Bees Important to Wisconsin Agriculture?" County contest entries are due by April 1.

For more information, please contact Barb Wenzel at 262.843.4400, bwenzel@ruralins.com or visit the Wisconsin Ag in the Classroom website at www.wisagclassroom.org.



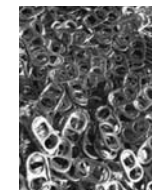
Ronald McDonald House Grateful For Tabs

Saving pop tabs is easy and clean. They are compact, with a concentration of recyclable aluminum.

Unlike empty cans, they do not need to be rinsed. Since 2000, aluminum tabs on the tops of soda cans have meant nearly \$240,000 to the Ronald McDonald House.

Revenue from recycling these little bits of aluminum helps provide a home away from home for families whose seriously ill children are undergoing treatment in the Milwaukee area.

Keep saving those tabs! Give them to any board member so Racine County receives credit. For information or questions, please contact Marge Demuth at 262.878.2530.



There are Benefits to Your Farm Bureau Membership:

- Auto**
- General Motors Discount
- Health**
- ScriptSave® Prescription Drug Savings Card
 - Stroke Detection Plus
- Supplies and Products**
- Case IH
 - FS-GROWMARK Patronage
 - Grainger
 - Polaris
 - Office Depot

- Communication**
- AgriVisor
 - The Country Today
- Insurance**
- Rural Mutual Insurance Company
 - Farm Bureau Financial Services
- Travel**
- AAA
 - AVIS Car Rental Discount Program
 - Choice Hotels International, Inc.
 - Wyndham Hotel Group

- Financial**
- AgriPlan Medical Reimbursement Program
 - Farm Bureau Bank
- Protection**
- \$500 Reward Protection Program
 - Accidental Death Policy

For complete details visit wfbf.com/benefits-membership.

Women's Committee Donates to Food Pantries

The Racine County Farm Bureau Women's committee donated to five local food pantries. Love, Inc., Burlington; Waterford Methodist Church; Norway Lutheran Church; St. Louis Catholic Church; and Union Grove Area Food Bank.

Each received \$800. The \$4,000 total donation was from profits of the Racine County Fair Cream Puff Stand.



Bulah Skewes and Jacquie Strueder at Union Grove Area Food Bank.



The St. Louis Catholic Church donation.



Norma Ranke and Jacquie Strueder at Waterford Methodist Church.



Donna Hanson and Jacquie Strueder, Norway Lutheran Church



Darlene Ehrhart and Jacquie Strueder at Love, Inc.

Scholarships Applications are Due!

Four \$1,000 higher education scholarships will be awarded to Racine County Farm Bureau members or their children.

Two scholarships will be given by the Women's Committee and two by the Farm Bureau Board of Directors with preference given to agriculture related majors.

The Revised 2014 scholarship form has been mailed to Racine County and city high school guidance offices. It also is available at the Union Grove Farm Bureau office and at <http://wfbf.com/countyfarmbureaus/racine/>.

Please note:

- Only the revised 2014 form will be accepted

- The application must be complete (form, photo, personal letter, two references)
 - Farm Bureau membership must have been held for at least one year
 - Submit application by **April 15**
- If any of the above criteria are not met, the application will NOT be considered.

Funding for our local scholarship comes from proceeds of the Racine County Fair Cream Puff Stand.

If you have any questions, please call Scholarship Committee Chair, Norma Ranke at 262.534.3685.



Outstanding 4-H Youth Awards

All 4-H members of Racine County Farm Bureau families are eligible and encouraged to apply for the 2015 Outstanding 4-H Member Awards.



To apply, after the County Fair, you must use the "Revised 2015" 4-H award form. It will be available online this spring both on the Racine County Fair Premium book site and also the Racine County Farm Bureau webpage.

YFA Spring Fling

Date: Saturday, April 11
Time: Band starts at 8 p.m.
New Location: Circle B, 6261 Wisconsin 60 Trunk, Cedarburg
Tickets: \$10 at the door, \$8 in advance
Band: The Mantz Brothers

Racine County Farm Bureau Contacts:

President, Keith Jacobson	414.852.1744
Vice President, Brian Schaal	262.492.9909
Secretary- Treasurer, Jim Hanson	262.534.7331
Women's Chair, Marge Demuth	262.878.2530
YFA Chair, Scott Davel	608.445.0810
Director, Steve Henningfield	262.661.9991
Director, Jeff Rice	262.210.4973
Director, Jeff Schmeckel	262.210.2302
Director, John Scott	262.994.4324
Director, Jacquie Strueder	414.469.5645
Racine County Farm Bureau	877.432.9489
District 1 Coordinator, Patti Roden	866.355.7341
WFBF Board Director, Dave Daniels	262.878.5035
RMIC District Manager, Linda Schopen	262.522.8620

Meet District 1 Women's Committee Representative, Amanda Carlson

Amanda grew up on a registered Holstein dairy farm in south east Minnesota. After graduating high school, she attended UW-River Falls and earned a bachelor's degree in agricultural marketing communications.



During her senior year she started her journey with Farm Bureau through the collegiate program. After graduation in December 2012, she worked full time on her family's dairy farm until acquiring an internship with the Minnesota Farm Bureau. She began her involvement in Wisconsin Farm Bureau when she moved to Waukesha County to begin her career at Charleston|Orwig, an agricultural marketing agency.

Baptized by fire, she is now the District 1 Women's Committee Chair and was accepted into the Leadership Institute 2015 class.

Familiar Face Celebrates 75 Years

Bernie Strueder was a Racine County board member for 12 years.



He just turned 75 years old and is the former owner and current employee at Harry Hansen Meat Service where he has worked for 50 years. Bernie was featured in *The Journal Times* for this accomplishment.

His wife, Jacquie, is still very active with the Women's committee serving as treasurer.

Congratulations, Bernie!

Women's Committee Meeting

June 11 is the date of the Women's committee summer evening meeting. Mark your calendar now! Watch for further information (newsletter and Racine County Farm Bureau webpage) regarding the program and location. This is an excellent opportunity to become better acquainted with other local women who share your life style.