

# Calumet County Farm Bureau

PO Box 5550 Madison, WI 53705

Address Service Requested

Non Profit  
Organization  
US Postage  
**PAID**  
Platteville, WI 53818  
Permit No. 124



For information about our farm safety campaign, contact your local Rural Mutual agent.

## Rural Mutual Agents in Calumet County:

**Dale Behnke** (920) 323-4838  
**PTR Insurance Services** (920) 464-1000

Bill Kriese - District Manager

## Wisconsin Farm Bureau Federation

### Implements of Husbandry Lighting Requirements Reviewed

Implements of Husbandry legislation took effect on April 30 to clarify and modify certain provisions. The most significant changes include the following.

- Modified the definition of an Ag CMV and allows Ag CMVs that directly harvest farm products, distribute feed to livestock or apply lime, spray, seeds or fertilizer, but not manure, to have the same axle weight exemption of Category B IOH.
- Requiring farm implement dealers to disclose the axle weight, in addition to the gross vehicle weight, at the time of sale.
- Authorizing IOH with rubber tracks to operate on the road as long as it does not damage the highway.
- Allowing for the transport of IOH and Ag CMVs by trailer or semi-trailer at the increased agricultural vehicle weight limits from farm to farm. A trailer or semi-trailer that is hauling an IOH or Ag CMV and exceeds the agricultural weight limits may apply for a no-fee permit.
- Allowing a vehicle authorized by permit or local resolution or ordinance to cross an intersecting highway under a different jurisdiction
- Changing the date by which a local unit of government must adopt an ordinance for it to be effective in the following year to November 30. A copy of the ordinance must be sent to the department by January 20 of that year.

Did you know that the Implements of Husbandry lighting and marking requirements will go in effect on November 1? Are you prepared?

- All vehicles exceeding 15 feet must have front and rear warning lights on and reflective material visible anytime on highway, unless operating in daylight with an escort vehicle and two orange or red flags marking the outside edges.
- All vehicles exceeding 22 feet must have an escort vehicle with hazard flashers activated. Escort is not required for incidental travel of a half mile or less.

For more information, visit [www.dot.wisconsin.gov/business/ag/index.htm](http://www.dot.wisconsin.gov/business/ag/index.htm).



### Rural Mutual Hosts Golf Outing



Each year Rural Mutual Insurance agent Randy Pingel sponsors a golf outing as a fundraiser for Calumet County organizations.

Money raised by this event is distributed to these organizations to help fund their activities and events throughout the year.

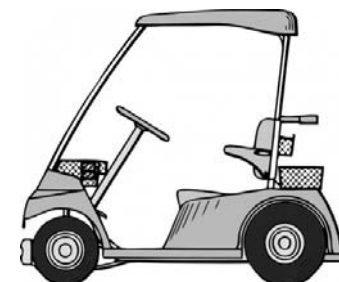
The 2014 Rural Golf Outing will be held on Saturday, August 22, at Hickory Hills Country Club in Chilton with a shotgun start at 1 p.m.

The outing is comprised of 40 teams with four golfers on each team. There will be a costume contest with prizes for the best dressed team! The funds raised this year will help to support the Calumet County Farm Bureau.

All donations received will be used for prizes and raffles. The cost for each team to participate is \$200 and includes 18-holes of golf, two carts and a meal for each golfer.

If you want to take part in this fundraiser by being a sponsor, please contact Dean Gebhart at 920.418.2149.

To register your team, please contact Randy Pingel at 920.849.1105.





# COUNTYnews

CALUMET COUNTY FARM BUREAU EDITION

## Members Attend Ag Women's Summit



Clara Hedrich of LaClare Farms in Chilton was a panelist during a breakout session.

Several Calumet County Farm Bureau members attended the fifth annual Wisconsin Ag Women's Summit on March 13-14 at the Madison Marriott West.

Clara Hedrich of LaClare Farms in Chilton also was a panelist during a Saturday morning breakout session titled "Adding Value to Your Farm: Agribusinesses."

The summit is presented by Badgerland Financial, WFBF and UW-Extension and was established to connect women involved in all areas of Wisconsin's diverse agriculture community.

Approximately 325 attendees listened to keynote speaker Laura Daniels and were entertained by Piano Fondue on Friday night.

It was an amazing time full of fun, friendship and surprises including unveiling of the AgVocate of the Year Nodji VanWychen and a Skype visit with the Fabulous Farm Babe Pam Jahnke.

To conclude the Ag Women's Summit there was a new logo reveal for the 2016 summit! We look forward to continuing the enthusiasm. Save the date for next year's summit on March 4-5, 2016.



Congratulations to Nodji VanWychen who was named the 2015 Wisconsin AgVocate of the Year during the Friday night banquet. She is pictured with Wisconsin Farm Bureau President Jim Holte.

## Sheboygan County is Home to District Essay Contest Winner

By Liz Gartman



Ruby Jesion was presented with her plaque and gifts from Wendy Kannel, WFBF Ag in the Classroom Coordinator.

the second consecutive year a student at Christ Child Academy has been the winner.

For the third time in four years Sheboygan County has had the District 6 winner in the Ag in the Classroom Essay Contest.

There were 130 entries and the winner was Ruby Jesion. "Why Are Bees Important to Wisconsin Agriculture?" was the title of her essay. This is the



Ruby Jesion stands with her class at the awards ceremony.

## YFA Discussion Meet Set

The Young Farmer and Agriculturist (YFA) District Discussion Meet will be at 7 p.m. on **August 11** at Mackinaws in Green Bay. Dinner will start at 7 p.m. and the discussion meet will follow.

Any YFA member, age 18 to 35, is encouraged to participate and anyone interested in watching is welcome to attend.

The question that will be discussed is "**How can we influence state and local policy that more effectively balances the social and economic interests of farmers and ranchers versus burdensome federal regulation?**"

For more information or questions, please contact District YFA Representative Caley Blado at 920.418.2226 or county YFA chair Kristin Birschbach at 920.418.1762.



District 6 Farm Bureau member Jamie Propson competed in the finals at the 2014 WFBF Annual Meeting.

### INSIDE THIS ISSUE:

- 2** OSHA Rule Change Meet Tanya Kudick Dial 8-1-1 Member Appreciation Policy Development
- 3** Farmland DVD for \$10 Ag Open in September Cookbooks Available Fair Time Farm Facts

## OSHA Recordkeeping and Reporting Rule Change



As of January 1, OSHA has updated their Recordkeeping and Reporting Rule.

There is a farm exemption that applies if the following criteria are met: employing ten or fewer employees and no labor camp associated with the farm. This exemption only applies to maintaining injury and illness records for OSHA.

The exemption doesn't apply to complying with OSHA's new severe injury and illness reporting requirements. All farms must report to OSHA if they have a severe injury or illness that fall within the following categories.

These include reporting:

- All work-related fatalities within eight hours.
- All work-related inpatient hospitalizations, all amputations and all losses of an eye within 24 hours.

You can report to OSHA by:

- Calling OSHA's free and confidential number at 1.800.321.6742.
- Calling your nearest area office during normal business hours.
- Using the new online form that will be available soon at [www.osha.gov/recordkeeping2014/index.html](http://www.osha.gov/recordkeeping2014/index.html).

## Meet Farm Bureau Women in District 6: Tanya Kudick



The Wisconsin Farm Bureau Women's Committee is working on a county newsletter project in 2015. It features women active throughout their district and county. Each district features one woman in all newsletters.

Tanya Kudick is from Kewaunee County and is the women's chair for her county Farm Bureau. She has been an active member for three years.

Tanya is a crop insurance agent and office manager for Lakeshore Heating and Cooling. Her hobbies include camping with her family which includes her husband Jody of 17 years, her 15-year old son, Dalton, 13-year old daughter, Mercedes and dog Browning.

Other hobbies include traveling, four-wheeling and time with family and friends.

When asked about her county Farm Bureau experience, Tanya said that she is new to Farm Bureau and that when she was elected women's chair in Kewaunee County a few years ago, she still feels like she has much to learn.

"I want to see us do more activities in our county and grow the women's program," Tanya said.

When asked what her favorite Farm Bureau event or memory, Tanya explained that she really enjoys working the Kewaunee County Farm Bureau food stand at their county fair.

"It really brings lots of good people together for agriculture," Tanya added and she is planning to do some education with beef promotional items at the fair.

When asked about her favorite childhood memory during the summer she replied that she loved when the whole family worked together.

"Everyone pitched in and everyone reaped the benefits of the hard work," Tanya said. "I remember one summer, my parents bought us a swimming pool for helping to pick stones. We all worked to harvest the 'crop' and teased my dad that he planted stones instead of corn! We enjoyed the pool for years to come of course after all the chores were done!"

Tanya was asked what area of Farm Bureau would she promote to a potential member and why?

"I would focus on young farmers," Tanya said. "I think we need to get people involved at a young age and show them that we can make a difference."

Keep up the good work Tanya and thank you for sharing your story.

**Rosalie Geiger**

District 6 Women's Committee Representative and Chair

## Dial 8-1-1 Before You Dig

Want to avoid spending a day in the dark? Or being without heat or air conditioning in your home? What about not being able to connect to the Internet, email or social media?

Preventing these issues may be as simple as dialing 8-1-1.

Protect yourself, your family and community and make sure to spread the word about 8-1-1.



**Know what's below.  
Call before you dig.**

## Calumet County Policy Development Meeting Date Set

The Calumet County Farm Bureau will host their annual policy development meeting at 8 p.m. on **August 5** at Ethel's in Chilton. Dinner will be provided.

Anyone interested in attending is welcome!

**SAVE** the **DATE**

## Northwoods League Presents Member Appreciation Days

Get your peanuts and Cracker Jacks ready!

The Wisconsin Farm Bureau Federation and Rural Mutual Insurance Company are teaming up for a special Farm Bureau Member Appreciation Day at the ballparks of the eight Wisconsin Northwoods League teams.

Throughout the summer through August, there will be three Farm Bureau Member Appreciation games at each of the eight Wisconsin teams.

This will be a special event for Farm Bureau members with special deals on game tickets that will include a team hat, soda and a hot dog.

There also will be special recognition of Farm Bureau during the game as well as advertising in the program book and radio ads so come on out and support your local Northwoods League team!

Tickets must be purchased one of two ways.

- Order online at the home team's website.
- Call the home team's ticket office in advance.

Be sure to use the promo code 'farmbureau' to receive the discounted rate.

"This will be a great opportunity for Farm Bureau members to take part in a member event and enjoy America's favorite past time," said Jim Holte, President of the Wisconsin Farm Bureau Federation.

Member  
Appreciation  
Days



	Eau Claire Express Friday, June 12 • 7:05 p.m. Monday, July 6 • 6:35 p.m. Saturday, August 1 • 6:35 p.m.
	Green Bay Bullfrogs Friday, May 29 • 6:35 p.m. Saturday, June 13 • 6:05 p.m. Friday, July 3 • 7:05 p.m.
	Kenosha Kingfish Wednesday, June 24 • 7:05 p.m. Monday, July 6 • 7:05 p.m. Monday August 3 • 7:05 p.m.
	La Crosse Loggers Tuesday, June 2 • 7:05 p.m. Monday, June 15 • 7:05 p.m. Wednesday, July 1 • 7:05 p.m.
	Lakeshore Chinooks Tuesday, June 2 • 6:35 p.m. Monday, June 15 • 6:35 p.m. Thursday, July 2 • 6:35 p.m.
	Madison Mallards Wednesday, May 27 • 6:35 p.m. Tuesday, June 9 • 6:35 p.m. Wednesday, July 1 • 7:05 p.m.
	Wisconsin Woodchucks Tuesday, June 30 • 6:35 p.m. Sunday, July 5 • 5:05 p.m. Sunday, August 2 • 5:05 p.m.
	Wisconsin Rapids Rafter's Wednesday, May 27 • 6:25 p.m. Saturday, June 20 • 6:05 p.m. Saturday, July 18 • 6:05 p.m.

## There are Benefits to Your Farm Bureau Membership:

### Auto

- General Motors Discount

### Health

- ScriptSave® Prescription Drug Savings Card
- Stroke Detection Plus

### Supplies and Products

- Case IH
- FS-GROWMARK Patronage
- Grainger
- Polaris
- Office Depot

### Communication

- AgriVisor
- The Country Today

### Insurance

- Rural Mutual Insurance Company
- Farm Bureau Financial Services

### Travel

- AAA
- AVIS Car Rental Discount Program
- Choice Hotels International, Inc.
- Wyndham Hotel Group

### Financial

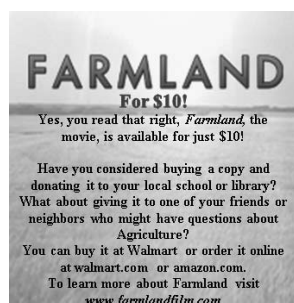
- AgriPlan Medical Reimbursement Program
- Farm Bureau Bank

### Protection

- \$500 Reward Protection Program
- Accidental Death Policy

For complete details visit [wfbf.com/benefits-membership](http://wfbf.com/benefits-membership).

## Farmland DVD for \$10!



Academy Award®-winning filmmaker James Moll's feature-length documentary, *FARMLAND*, is available on DVD at Walmart and Walmart.com. The availability of the documentary at retail locations across the country, provides another opportunity for viewers to experience the film, which offers a firsthand

glimpse inside the world of farming by showcasing the lives of six young farmers and ranchers in their twenties.

Since this film is a great tool for educating others about agriculture, have you considered donating a copy to your local

schools and libraries or buying a copy and giving it to a friend who might have questions about various types of farms. Your \$10 could make a huge impact on someone else!

The documentary also is available to rent on DVD from Netflix and to purchase on Amazon, with continued availability for rent and purchase via digital download on iTunes, Amazon Instant Video, Blockbuster On-Demand, Sony PlayStation, Vudu.com, Xbox and YouTube.

Produced by Moll's Allentown Productions, *FARMLAND* was made with the generous support of the U.S. Farmers & Ranchers Alliance.

For more information, visit [www.FARMLANDfilm.com](http://www.FARMLANDfilm.com) or on Facebook by searching Farmland.

## Wisconsin Ag Open In September

The 18<sup>th</sup> Annual Wisconsin Ag Open hosted by the Wisconsin Farm Bureau Foundation will be held on **Monday, September 14** at Christmas Mountain Village in Wisconsin Dells.

For sponsorship and registration details, contact Wendy Kannel at [wkannel@wfbf.com](mailto:wkannel@wfbf.com), 608.828.5719 or download a form from the Foundation website.

## Upcoming Events

### July

- 1 YFA Achievement Award and Excellence in Ag applications due

### August

- 5 Calumet County Policy Development Meeting
- 7 Applications due for Leopold Conservation Award
- 11 District Discussion Meet at Mackinaw's in Green Bay
- 15 Institute Class Applications Due
- 22 Rural Open Golf Outing

### September

- 4-7 Calumet County Fair
- 30 Membership Year End

### October

- 27 Calumet County Farm Bureau Annual Meeting

### November

- 7 District YFA Social

## Cookbooks For Sale

Hurry! There are only a few boxes of the Calumet County Farm Bureau's latest cookbook with a beautiful Betty Engel print on the cover left!



To get your copy for just \$10, please contact Jessica Schuh at 920.756.1907 or Rosie Lisowe at 920.849.4413.

## County Fair is Just Around the Corner, September 4-7

Help is needed at the Calumet County Fair on **September 4-7** in the fair food stand.

Volunteer to work in the food stand and get a free meal ticket for the food stand as well as half off of your dinner at the annual meeting.

The shifts are four hours long each day, 6 to 10 a.m., 10 a.m. to 2 p.m., 2 to 6 p.m. and 6 p.m. to close.

To volunteer, please contact Jessica Schuh at 920.756.1907 or Carley Blado at 920.418.2226.

## Calumet County Farm Bureau Contacts:

President, Carley Blado 920.418.2226  
Vice President, Joe Lisowe 920.849.4413  
Secretary/Treasurer, Tiffany Schneider 262.689.7837  
Women's Chair, Jessica Schuh 920.756.1907  
YFA Chair, Kristin Birschbach 920.948.5435

Director, Greg Bohman 920.470.1762  
Director, Ben Dietzen 920.759.1927  
Director, Clara Hedrich 920.849.2926  
Director, Bob Huebner 920.209.0799  
Director, Jim Petrie 920.418.0274  
Director, Josh Sabel 920.375.0371

Calumet County Farm Bureau 888.644.8356  
WFBF Board Director, Rosie Lisowe 920.849.4413  
District 6 Coordinator, Becky Salm 920.693.8467  
RMIC District Manager, Bill Kriese 920.893.1811

## District YFA Social- Save the Date!



Join us from 8 p.m. to midnight on Saturday, **November 7**, for a district YFA social at Twin Fountains in Manitowoc. The featured band is Spitfire Rodeo.

## Ag in the Classroom Presents New Farm Facts Brochure

Wisconsin Ag in the Classroom is proud to introduce the newly-revised 2015 Wisconsin Farm Facts brochure.

The brochure highlights Wisconsin's diverse agriculture industry and is now interactive.

Using a free app called, Aurasma, users can make the brochure come to life with additional facts and videos related to Wisconsin agriculture.

To download the app, visit the app store on your tablet or smart phone and find Aurasma. Download the app and make sure to follow WIAITC.

Copies of the brochure are available by visiting [wisagclassroom.org](http://wisagclassroom.org) and using the resource order form.

Did you know that Wisconsin ranks second in . . .

<b>SECOND</b>	<b>Milk</b>	27.5 billion pounds	
	<b>Milk Cows</b>	1.27 million cows	
	<b>Carrots for Processing</b>	117,000 tons	
	<b>Cucumbers for Pickles</b>	38,000 tons	