

# Langlade County Farm Bureau

PO Box 5550 Madison, WI 53705

Address Service Requested

Non Profit  
Organization  
US Postage  
**PAID**  
Platteville, WI 53818  
Permit No. 124



For information about our farm safety campaign, contact your local Rural Mutual agent.

## Rural Mutual Agents in Oconto County:

**Casey Boye**  
(715) 923-7708

**Melvin Gross**  
(920) 855-6960

Tom Gustafson - District Manager

## Wisconsin Farm Bureau Federation

### Pleasant View Elementary Tours Sveda Farms By Christy Sveda-Schreiber



The students on the Sveda Farm Tour named a calf and took turns feeding.

Another spring has sprung and another kindergarten class trip to the farm is here and gone. Pleasant View Elementary accepted an invitation to tour Sveda Farms LLC. The students had so much fun meeting a day-old calf. Mr. Jr. calf, the name they gave him, made them squeal and laugh when he decided to go to the bathroom right in front of them.

They held his bottle and took turns feeding him. They also tried out a milking machine unit and a lot of eyes got quite large when the suction took their fingers but were relieved when their finger returned unharmed!

The students got to feel and smell the forages and grains that the cows eat to produce milk. We gave them a lot of fun facts, i.e., how many gallons of water a cow drinks in a day (90 gallons) and a cow can produce enough milk in her career to make 9,000 gallons of ice cream!

Each of the students got a cow number and they had to look around the barn to find her and then we told

them some specific information about her. Every student seems to love that game. They give her a name and really connect with her. I still have past kindergarteners tell me about the cow that they had!

The students also got to meet the granola bar eating trio...we have three cows that just love granola bars and they didn't mind getting them from the students!

We finished the tour with a look at the machinery and one boy was just delighted to see all the play machinery he has in real life size, he just couldn't believe it.

The tour ended with washing hands and passing out milk, ice cream, cheese and homemade chocolate chip cookies.

We passed out cow backpacks filled with promotional goodies that the Langlade County Farm Bureau helped purchase. We hope to do it again next year. Have a safe and prosperous summer!



Pleasant View Elementary kindergarteners toured Sveda Farms. The tour was cosponsored by the Langlade County Farm Bureau.

### FARMLAND Film On Sale Now

Academy Award®-winning filmmaker James Moll's feature-length documentary, FARMLAND, is available at Walmart and Walmart.com.

The availability of the documentary at retail locations across the country and online, provides another opportunity for viewers to experience the film, which offers a firsthand glimpse inside the world of farming by showcasing the lives of six young farmers and ranchers in their twenties.

This film is a great tool for educating others about agriculture. There are many ways to use this film in 'ag'vocating efforts.

For example, you could donate copies to your schools and libraries or schedule a community movie night to watch the film.

FARMLAND premiered in theaters across the country in 2014 and is



available for rent and purchase at Netflix, Amazon, select retail outlets and via On Demand platforms.

The documentary also is available to rent on DVD from Netflix and to purchase on Amazon, with continued availability for rent and purchase via digital download on iTunes,

Amazon Instant Video, Blockbuster On-Demand, Sony PlayStation, Vudu.com, Xbox and YouTube.

"I'm thrilled by how wide the distribution has been for Farmland," said Moll. "There is a lot of interest in the lives of young farmers and ranchers. It is a fascinating topic and I'm glad that there is such a demand for the film on DVD and online."

Produced by Moll's Allentown Productions, FARMLAND was made with the support of the U.S. Farmers & Ranchers Alliance®. Check out the official trailer and more information about the documentary at FARMLANDfilm.com and on Facebook.



# COUNTYnews

LANGLADE COUNTY FARM BUREAU EDITION

## Langlade County Farm Bureau Co-sponsors Food for America on the Farm

By Jolynne Schroepfer

Agriculture education was brought to life by Antigo High School student leaders who shared their knowledge of agriculture with fourth graders from around our county.

More than 40 high schoolers volunteered to show hands-on demonstrations at the Maly Dairy Farm in Bryant. The Maly family includes Butch, daughter Alicia and her husband Kurt Sippl, Ron and his son Jake. Malys' hosted nearly 250 students. All fourth graders in Langlade County were included from Antigo, All-Saints and Peace, White Lake and Elcho.

High school leaders taught students in different areas of agriculture. Topics included maple syrup production, wildlife tracking, milking cows, animal nutrition, horticulture and animal health.

These leaders created and presented their topics to each school and then answered questions. The different learning stations were based on what they are studying in classes at Antigo High School.

For example, at the maple syrup demonstration, students watched as 40 gallons of sap cook down to one gallon of syrup. There was even a tasting activity to try "real" maple syrup. Several Antigo high school students collected their own sap during the spring to sell to sugar shacks. Wisconsin ranks second in maple syrup production.

This was the first year for the Food for America project at Antigo High School and sponsors were Langlade County Farm Bureau, Langlade County Dairy Promotion Committee and Frontier-Servco FS.

Students took home the planter that they created, career agriculture magazine, school supplies and a t-shirt. Teachers were given curriculum guides, workbooks and the agriculture book of the year.

High school students who participated included Casey Anstutz, Alex Arrowood, Molly Brown, Maggie Gallenberg, Courtney Gray, Maddy Gray, Ricky Hasse, Zach Jaje, Trent Karl, Colin Klemann, Lexi Klemann, Takota Kolpack, Luke Kirvosheoin, Madi Langseth, Savannah LeQue, MiKal Lyon, Jake Marshall, Whitney Marshall, Jordan Marvin, Izzy Matuszewski, Katelyn Matuszewski, Mad-die Matuszewski, Abby Michels, Peyton Novotony, Tysen Opper, Chandler O'Rourke, Brett Packard, Colby Powell, McKenzy Powell, Ashley Raab, Kimberly Robertson, Tosha Schreiber, Marcus Schroepfer, Mitchell Schroepfer, Jack Schuessler, Samantha Schuessler, Kira Simonis, Corrin Smith, Sandy Solin, Lindsey Steger, Montana Thom, Callie Wiegert and Cullen Williams.

Plans are already underway to host the Food for America program again in 2016.



### INSIDE THIS ISSUE:

- 2** President's Message
- Ag Day at the Capitol
- District YFA Report
- AITC Bus Tour
  
- 3** Women's Committee Report
- FFA Farm Forum
- District Women's Report
- District Board Report
- Annual Meeting Date Set



More than 200 elementary school students from Langlade County attended.



Following the milk from cow, to cooling and to storage.



Students created their own pot of flowers from the FFA greenhouse seedlings.



Students listened to the calf's heartbeat.



The calf care station was a big hit.



Students got a t-shirt and ag information.



What do dairy production and maple syrup production have in common? Maybe ice cream with maple syrup topping.



Farm owner Butch Maly explained how much feed it takes to make the amount of milk a cow gives in a day.



Event organizer Jolynne Schroepfer gave instructions to FFA student guides.

## President's Message



The 2015 Langlade County Fair is July 29 through August 2. Along with all the exhibits, rides, music and other fun, Langlade County Farm Bureau will sponsor the My American Farm video games in their new iPad format.

My American Farm is an educational game platform launched in 2011 to engage pre-kindergarten through fifth graders in the discovery of relevant agricultural issues. It also is available on the web and offers agriculture-themed games, activity sheets and comics.

Although it's designed for kids adults can play, too.

Frontier-Servco FS has graciously provided space at their fair booth for us to set the game up. You can stop by to try it out on Friday, July 31, and while you are there, check out the great products and services available from Frontier-Servco FS.

See you at the fair.

**Tom Houdek**  
Langlade County Farm Bureau President

## Langlade County Farm Bureau Members Attend Ag Day at the Capitol

By Joel Zalewski

I had the privilege of attending Ag Day at the Capitol in March as one of the spokespersons for Frontier-Servco FS.

We attended the luncheon and had the pleasure of listening to keynote speaker, Governor Scott Walker praise the value and virtues of agriculture in Wisconsin. It was a very enjoyable experience.

Our team was scheduled to meet with four legislators. The two that really made a positive impression on me were Representative Lee Nerison and Representative Mary Czaja.

In a time when it is easy to be cynical about the effectiveness of our government, it is very encouraging to meet legislators who are aware and involved in solving the issues we face in agriculture.

Both legislators welcomed us in spite of their busy schedules and listened to our concerns. Their responses demonstrated an understand-

ing of and support for a healthy agricultural environment.

The issues we addressed were Implementations of Husbandry legislation, changes to nutrient management rules and potential changes to create a central ag lien filing system.

Our main focus was on the need to adopt changes to the Implementations of Husbandry permitting process.

We have encountered widespread confusion and even disregard for the new rules by local authorities as we attempted to comply.

I will be watching to see if the problem is addressed and what solutions are adopted. Regardless of the outcome, I'm glad I have the privilege of living in a system where I can have a voice if I'm willing to get involved.



Langlade County Farm Bureau sponsored two Antigo FFA members and Advisor Jolynne Schroepfer to Ag Day at the Capitol. They met with Representatives Mary Czaja (center), Jeff Mursau and Senator Tom Tiffany.



Farm Bureau members from northern Wisconsin discussed ag issues with Assemblyman Jeff Mursau and Senator Tom Tiffany during Ag Day at the Capitol.

## Ag in the Classroom Presents New Farm Facts Brochure

Wisconsin Ag in the Classroom is proud to introduce the newly-revised 2015 Wisconsin Farm Facts brochure. The brochure highlights Wisconsin's diverse agriculture industry and is now interactive.

Using an app called, Aurasma, users can make the brochure come to life with facts and videos related to Wisconsin agriculture.

To download the app, visit the app store on your tablet or smart phone and find Aurasma. Download the app and make sure to follow WIAITC.

Copies of the brochure are available by visiting [wisagclassroom.org](http://wisagclassroom.org) and using the resource order form.

Did you know that Wisconsin ranks second in . . .



## District 7 YFA Report

Thank you to the people who came to the February 28 Gambler hockey game. We had 46 YFA members attend representing four of the six District 7 counties!

The 2015 YFA Discussion Meet questions are ready! Mark your calendars for September 9 for the District 7 Discussion Meet at 7 p.m. in the CRI Resource Center in Shawano.

**At the district level we will discuss question #5. If you are interested in competing, please let us know.**

1. How should Farm Bureau protect and encourage producers' ability to use new technology? How can Farm Bureau work with government and the public to ensure public acceptance while encouraging innovation?
2. Should we draft policy to protect livestock producers from false accusations regarding animal welfare? What could it look like?
3. How do we balance agriculture's water needs with maintaining vibrant communities? How do historical water rights influence this discussion?



Forty six District 7 YFA members attended the Green Bay Gamblers hockey "Dairy Night".

4. How do we get the public to support right-to-farm laws? Should these laws be determined on the state or the federal level?
5. How can we influence state and local policy that more effectively balances the social and economic interests of farmers and ranchers versus burdensome federal regulation?

Wishing you a great spring planting season!

**Kristi and Brian Fiedler**  
District 7 Representatives

## Wisconsin Ag in the Classroom Hosts Bus Tour for Educators, Volunteers

How often do you get the chance to walk in a cranberry bog? Or see how machinery gets from design to dealer?

Teachers and volunteers are encouraged to attend the Summer Teacher and Volunteer Bus Tour held by the Wisconsin Farm Bureau Foundation's Ag in the Classroom program.

Attendees will learn how to incorporate agricultural concepts into their K-12 curricula, network with fellow educators and obtain free resources available to students and classrooms.

Teachers and volunteers can 'Board the Bus' on July 14-15 to Wisconsin farms, processors and agricultural businesses in the Marshfield area.

This year's visits include Seehafer Farm, Schallow's Nursery, H & S Manufacturing, Dubai Cranberry Company, Marshfield Ag Research Station, AgSource Laboratories, Mead Wildlife Area and Lonely Oak Farm.

A \$50 registration fee includes lunch on Tuesday and Wednesday, Tuesday night dinner, bus costs, entry fees and snacks. Participants are responsible for their own hotel expenses and additional purchases at venues.

All participants are required to pay the registration fees. Other expenses of the training opportunities are covered by the Wisconsin Farm Bureau Foundation-Jeanette Poulson Fund.

The UW-River Falls offers undergraduate and graduate credits for attending the tour. For more information, please contact James Graham at 715.425.3555 or [James.Graham@uwrf.edu](mailto:James.Graham@uwrf.edu). If taking the training for credits, attendees will register and pay tuition fees directly to UW-River Falls.

For more information, please contact Wendy Kannel, Wisconsin Ag in the Classroom Coordinator at 608.828.5719. To register, visit [wisagclassroom.org](http://wisagclassroom.org) and look for the tour under quick links.

## There are Benefits to Your Farm Bureau Membership:

- Auto** .....
- General Motors Discount
- Health** .....
- ScriptSave® Prescription Drug Savings Card
  - Stroke Detection Plus
- Supplies and Products** .....
- Case IH
  - FS-GROWMARK Patronage
  - Grainger
  - Polaris
  - Office Depot

- Communication** .....
- AgriVisor
  - The Country Today
- Insurance** .....
- Rural Mutual Insurance Company
  - Farm Bureau Financial Services
- Travel** .....
- AAA
  - AVIS Car Rental Discount Program
  - Choice Hotels International, Inc.
  - Wyndham Hotel Group

- Financial** .....
- AgriPlan Medical Reimbursement Program
  - Farm Bureau Bank
- Protection** .....
- \$500 Reward Protection Program
  - Accidental Death Policy

For complete details visit [wfbf.com/benefits-membership](http://wfbf.com/benefits-membership).

## Women's Committee Report By Bev Brecklin

The months always seem to fly by and again, this July, I plan on doing a beef promotion for July Beef Month. I haven't set a date, but I hope to do it at Ken's Hwy 45 Meat Market.

Wisconsin's beef industry has grown considerably in the past 20 years. On-farm beef production and beef processing provides more than 35,000 jobs in Wisconsin and contributes \$2.1 billion in total income.

Much of the state's beef cow herd is located in western and southwestern areas of the state. Grant County is the state's top beef county with more than 10 percent of the state's beef cows.

This is a very good time to raise beef cattle and even if you ship steers or cull cows, the prices have never been better. While the beef cattle inventory has decreased throughout the U.S., much of it due to drought and other factors, it has grown by 44 percent in Wisconsin. We rank third in the nation for increasing cattle numbers, right after Nebraska and Washington.

So, after June Dairy Month, let's not forget July Beef Month. If people ask you, "Where's the beef?" tell them that a lot of it is right here in Wisconsin. Have a happy and safe summer!

## Antigo Chapter Members Attend FFA Farm Forum

Langlade County Farm Bureau and Frontier-Servco FS jointly sponsored three Antigo FFA students and their advisor-chaperone to the FFA Farm Forum held February 20-21 at the Mead Hotel in Wisconsin Rapids.



The students were Trent Karl, McKenzie Powell, and Kira Simonis.

During the two-day event the FFA members attended workshops that covered topics including post-high school agricultural opportunities, social media, advocating for agriculture, leadership and more.

Keynote speakers at the forum were Jim Holte, Wisconsin Farm Bureau President; Kaitlyn Riley, WQOW multimedia journalist and Gretchen Kamps, beef farmer and Wisconsin Farm Bureau District 3 Coordinator.

The Wisconsin Farm Bureau Foundation sponsors the FFA Farm Forum in cooperation with the Wisconsin Association of FFA. This year's FFA Farm Forum marks the 43rd year the Farm Bureau family of affiliates has sponsored the event for Wisconsin youth.

## District 7 Women's Committee Report By Katelin Haglund



Hi! I am Katelin Haglund, the new District 7 Women Committee Representative.

I live in Hortonville and work for BMO Harris Bank in Appleton as an agriculture portfolio manager. I serve as the Women's chair for Outagamie County Farm Bureau.

I am from western Wisconsin where I grew up on a dairy farm outside of Plum City. I am a graduate of the Wisconsin Farm Bureau Leadership Institute, Class VI, and competed in the YFA Discussion Meet, representing District 7 and District 9 at the state contest.

I am excited to serve as the state Women's Committee Representative and planning to continue the District 7 Fall Women's Summit as well as having some additional events throughout the year.

## Humor Corner By Wes Raddatz, District 7 Coordinator

Some people pay their bills when they are due, some when they are overdue, and some never do.

Terri: "I'm rich! I just bought 50 female pigs and 50 male deer."

Kari: "And what do you expect to get from that?"

Terri: "Expect, nothing! I've already got a hundred sows and bucks!"

Seek out the road to success, but don't be surprised if you find it's still under construction.

There are worse things than getting a call for a wrong number at 3 a.m.....like, it could be the right number.



## Langlade County Farm Bureau Contacts:

President, Tom Houdek	715.627.2156
Vice President, Robert Fronek	715.623.2416
Secretary/Treasurer, Christy Sveda-Schreiber	715.623.7097
Women's Chair, Beverly Brecklin	715.623.4153
YFA Chair, Mary Fronek	715.623.2416
Director, Richard Bolen	715.623.6974
Director, Jake Bula	715.623.6779
Director, Darlene Eckerman	715.623.2520
Director, James Jansen	715.623.6261
Director, Lee Parsons	715.623.6618
Director, Jolynne Schroeppfer	715.627.2539
WFBF Board Director, Wayne Staidl	715.582.3671
District 7 Coordinator, Wes Raddatz	866.355.7346
RMIC District Manager, Dave Meihak	715.344.6220

## District 7 Board Report



The District 7 Member Information and Policy Development Meeting will be held at 7 p.m. on Monday, August 10, at the River Rail Restaurant, N5547 River Street in Shiocton.

For more information about the meeting, please contact your county Farm Bureau board members.

This event will be fun and educational event and something new. We will hold a discussion meet that members older than 35 years old can participate in. Dale Beaty, WFBF Director of Leadership Development, will conduct the event.

Also, we will conduct a policy development session with a member of the WFBF government relations staff so bring your thoughts, concerns and ideas.

**Wayne Staidl**  
WFBF District 7 Director

## Annual Meeting Date Set

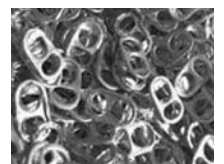
The 2015 Langlade County Farm Bureau annual meeting will be at 7 p.m. on Wednesday, October 21, at the Antigo Town Hall in Antigo. Please note the new location that will give us more room to accommodate our increasing attendance.

The keynote address will be given by the Antigo FFA about the Food for America on the Farm event. Additional reports will be given by Marie Graupner from the Land and Water Conservation Department and Stephanie Plaster, UW Extension agent.

Frontier-Servco FS has again generously agreed to sponsor the meal for the event, so please join us for some of that delicious Chester fried chicken.

## Save Your Pop Tabs!

The state Women's Committee is collecting tabs for the Ronald McDonald's House.



Last year 734 pounds were collected, which is the equivalent to more than one million tabs. The Committee has set a goal of 700 pounds for this year. If you are interested in contributing, please contact Katelin Haglund at 715.210.5384. Help District 7 lead the state!