

Pierce County Farm Bureau

PO Box 5550 Madison, WI 53705

Address Service Requested

Non Profit
Organization
US Postage
PAID
Platteville, WI 53818
Permit No. 124





**For information on life insurance,
contact your local Rural Mutual agent.**

Life insurance and annuity products offered through Farm Bureau Life Insurance

Rural Mutual Agents in Pierce County:

Leah Close	Steve Jenkins
(715) 425-8121	(715) 425-8121

Ken Truax - District Manager

Wisconsin Farm Bureau Federation

Kimball is Finalist in Discussion Meet

Pierce County Farm Bureau YFA chair Peter Kimball was one of the three finalists for the District 9 YFA Discussion Meet held on August 14 in Baldwin.

Peter Kimball is a 2005 graduate of UW-River Falls, where he earned a degree in agricultural studies. Peter owns a 100-cow Holstein and Jersey dairy farm outside of Spring Valley. He farms 200 acres of corn and hay. Peter also serves as the Pierce County YFA chair.

The YFA Discussion Meet is an exercise that develops cooperative problem solving in a public roundtable format. It is a panel-type discussion where YFA members are judged on their ability to express their ideas and opinions on the hottest



YFA members from around District 9 participated in the Discussion Meet on August 16. The three finalists include (L to R): Peter Kimball (Pierce County), Julie Wadzinski (Barron County) and Kirsten Konder (St. Croix County).



Peter will be representing Barron County in the YFA Discussion Meet.

issues driving agriculture. The question that was discussed was: How can young farmers and ranchers work to encourage membership growth and member engagement for the county, state and national Farm Bureau organizations?

Peter will now move onto the state competition which is held in conjunction with the WFBF Annual Meeting and YFA Conference in December along with Julie Wadzinski from Barron County and Kirsten Konder from St. Croix County.

Congratulations Peter!

Governor Scott Walker Makes a Stop in District 9

Governor Scott Walker and Lieutenant Governor Rebecca Kleefisch made a stop in District 9 on Tuesday, October 7.

They stopped at Loren and Diane Hanson's farm in Elk Mound. Farm Bureau members from around the district heard both Governor Walker and Lieutenant Governor Kleefisch speak and also talked with them about agriculture. Both spoke about agriculture's \$88 billion impact in Wisconsin.



District 9 Coordinator Katie Mattison, Governor Scott Walker, WFBF President Jim Holte and Pierce County president Dean Bergseng posed for a picture.

Governor Scott Walker was quoted saying "It's not only about jobs, which, that's a big part of it, it's also about a way of life for many farm families across the state of Wisconsin and we want to continue to make it easier for our farmers to do what they do best."



COUNTYnews

PIERCE COUNTY FARM BUREAU EDITION

Most Receives Distinguished Service to Farm Bureau Award



George Most was awarded the Distinguished Service to Farm Bureau Award by the Pierce County Farm Bureau at their annual meeting held on September 10. George has been a member of Farm Bureau for around 70 years. For 20 of those years, George drove the Hastings Co-op Creamery truck in the

River Falls and Prescott parades. In those years, more than 80,000 cartons of milk were passed out to parade goers.

In addition to George's involvement in Farm Bureau he has been involved in a number of other activities throughout the years. George served on the Oak Grove Town Board for approximately 30 years. He has been extremely involved in Pierce County Fair, providing the spot cow trophy for the Grand Champion Holstein cow for many years. George also had the first home bred excellent cow in the Pierce County spot cow.

George enjoys growing sweet corn and providing it to friends, family, neighbors, local nursing homes and food shelters. He still enjoys playing golf in the farmer's league and also playing in euchre tournaments in the area.

Congratulations George on the Distinguished Service to Farm Bureau award!

Prestrud Completes Term as District 9 Women's Representative



This is bittersweet for me. I recently had my last county annual meeting in Polk County, and what a great turnout! In the same week, I had my last District 9 Fall Women's Summit. White Pines Berry Farm hosted the event and we had a great bunch of ladies join us for the day.

As I say good bye to the responsibility in District 9 as the Wisconsin Farm Bureau Women's Representative, I am reminded of my experiences as I served in this role these

past five years. The one thing I will remember most of all are the many friendships, they will last me a lifetime.

I want to welcome the new District 9 Women's Representative, Amber Cordes! She will do a great job.

Mary Prestrud
Retiring District 9 Women's Committee Representative

Cordes Named District 9 Women's Representative

Amber has been a Farm Bureau member since 2005 and joined after being asked to help at the county fair food stand by Karyn Schauf. At the time, Amber wanted to get more involved in the community which led to her next role as a member of the Executive Committee for the Barron County Farm Technology Days.



Amber knows it's important to be a part of the agriculture community for the simple reason being, farmers feed the world and that makes her want to be a voice that helps educate the public about where their food comes from. She stated that it is frightening to see how many people actually don't know where their food comes from.

Amber operates a 52-cow registered Holstein dairy with her husband, Will, near Comstock. The Cordes' have two children, Nathan (5) and Kathryn (3).

INSIDE THIS ISSUE:

- 2** President's Message
- Fall Women's Summit
- Recycle Holiday Lights
- County Annual Meeting
- Welcome New Members
- 3** Trivia Contest
- Winter Storage Advice
- We Need Emails
- Soybean Science Kit
- Member Benefits

President's Message



Pierce County Farm Bureau members,

I write this mid-October and so far we have had a nice fall for getting corn silage and beans off the fields. By the time you get this, the weather may be a bit different.

Our county annual meeting was held on Wednesday, September 10 at the Martell Community Center. It was great to have Wisconsin Farm Bureau Federation Chief Administrative Officer Steve Freese attend our meeting. He spoke about his background, which includes

farming, the Wisconsin legislature and Circus World Museum in Baraboo. In addition to Steve, our District Director and Wisconsin Farm Bureau President Jim Holte also attended and spoke on the WFBF strategic plan.

We awarded the Distinguished Service to Farm Bureau Award at our annual meeting this year as well. George Most was the recipient. George has been an integral part of Pierce County, Wisconsin Farm Bureau and the agriculture community for many years and we were pleased to present him with this award.

The county dairy banquet was held in Elmwood on October 16. Close to 200 people were in attendance at this year's meet-

ing. Greg Nelson presented a nice slide show and comments on his September trip to China and Vietnam. Jim Paides received the Distinguished Service Award for his dedicated service to agriculture in Pierce County.

It has been another successful membership year and we are now looking forward to the WFBF Annual Meeting in Wisconsin Dells, December 5-8.

Have a safe harvest everyone.

Dean Bergseng
Pierce County Farm Bureau President

Women's Event Held October 8

Women from across District 9 gathered for the Fall Women's Summit on October 8 for a day of touring, tasting and fun!

Attendees enjoyed lunch and a tour of fellow Farm Bureau members Greg and Irma Zwald's farm, White Pine Berry Farm. After that the group moved on to 65 Vines to hear from owner Scott Andrzejczak, taste wine and learn about the wine making process. To wrap up the day, the group visited the UW-River Falls dairy plant to watch ice cream being made. The group enjoyed fresh butter brickle ice cream as it came out of the mixer.

Thank you to Mary Prestrud, District 9 Women's Representative, for putting together a great event!



Women from Barron, Dunn, Polk, Pierce and St. Croix counties attended the District 9 Fall Women's Summit. We even had visitors from Hancock, Iowa and Hastings, Minnesota!

Welcome New Members

John Anderson **

Andrew Ausman

Jeffrey Baier **

Kasey Hauk

Mathew Herink

Jeffrey Kitelinger

John Miller

Lance Nelson **

Tom Sherry

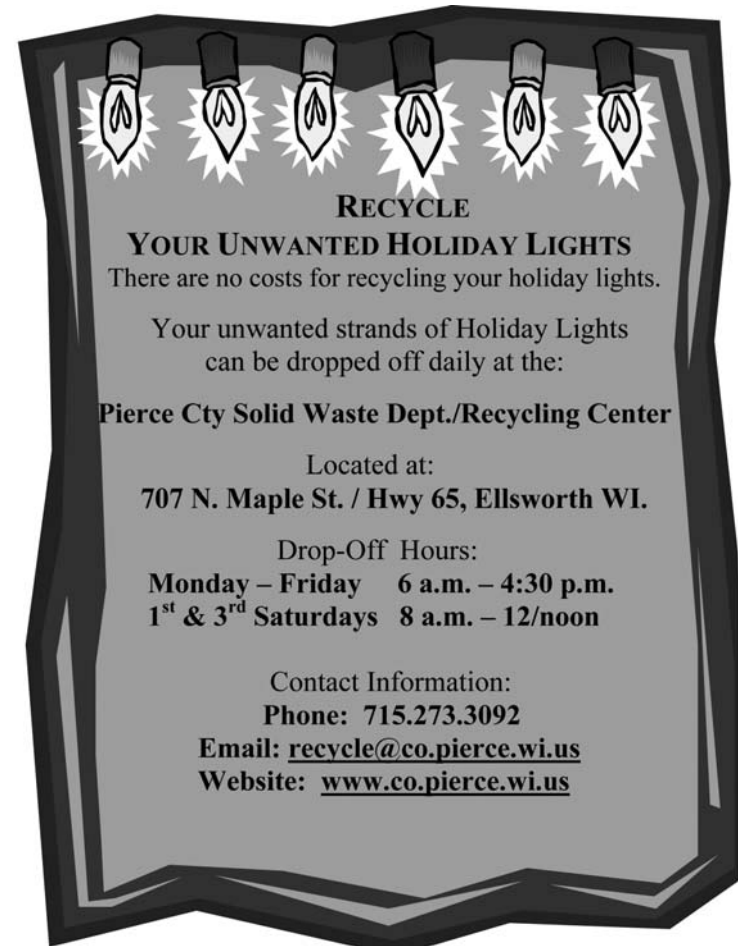
**Denotes Voting

Durand Broadcasting LLC

Ellsworth Cooperative Creamery

Sandy's Grocery and Gas Inc

Welcome
to **Farm
Bureau**



County Annual Meeting Held

Members of the Pierce County Farm Bureau held their annual meeting on September 10 at the Martell Community Center.

As a grassroots organization, it is Farm Bureau's members on the county level who create and set the policy goals of the state's leading farm organization. The Wisconsin Farm Bureau is often asked to get involved in issues affecting production agriculture and rural Wisconsin both in Madison and Washington, D.C. During the meeting, members discussed a wide range of issues including UW-Extension, big data, EPA and family farms. Resolutions passed during this meeting have been forwarded on for consideration by the Wisconsin Farm Bureau at the Annual Meeting in Wisconsin Dells in December.

Eric Turner was elected to serve on the board at the meeting. Delegates were also elected to attend the WFBF Annual Meeting.

For more information on the Pierce County Farm Bureau, call 877.483.5447 or visit wfbf.com/countyfarmbureaus/pierce.

There are Benefits to Your Farm Bureau Membership:

Auto

- General Motors Discount

Health

- ScriptSave® Prescription Drug Savings Card
- Stroke Detection Plus

Supplies and Products

- Case IH
- FS-GROWMARK Patronage
- Grainger
- Polaris (NEW)
- Office Depot

Communication

- AgriVisor
- The Country Today

Insurance

- Rural Mutual Insurance Company
- Farm Bureau Financial Services

Travel

- AAA
- AVIS Car Rental Discount Program
- Choice Hotels International, Inc.
- Wyndham Hotel Group

Financial

- AgriPlan Medical Reimbursement Program
- Farm Bureau Bank

Protection

- \$500 Reward Protection Program
- Accidental Death Policy

For complete details visit wfbf.com/benefits-membership.

Fun'd the Foundation TRIVIA Contest

Q1: This State Senator won the WFBF Discussion Meet contest in 1985.

Q2: What is Wisconsin's State Beverage?

Q3: Name the U.S. city whose every other letter is "u."

Gather up to six of your closest (or smartest) friends for a Farm Bureau trivia contest on Sunday, December 7 at 7:30 p.m. during the WFBF Annual Meeting at the Kalahari Resort in Wisconsin Dells. Categories will include current events, history, geography, music, movies, sports, Farm Bureau and more!

- Teams of up to six people
- \$10 per person/\$60 per team
- Three (15 minute) rounds of 25 questions
- Register at wfbf.com/programsevents/event-registration
- Teams can register up until 5 p.m. at the Annual Meeting registration desk.

A1: Senator Sheila Harisdorf
A2: Milk
A3: Dubuque

Pierce County Farm Bureau Contacts:

President, Dean Bergseng 715.307.4976
Vice President, John Krings 715.495.6285
Secretary, Laura Benitz 715.220.8962
Treasurer, Roy Swanson 715.273.3268

YFA Chair, Peter Kimball 715.307.3726
Women's Chair, Monica Krings 715.495.6286
Director, Mary Brand 715.307.0903
Director, Eric Turner 715.307.7262

Pierce County Farm Bureau 866.795.4792
WFBF Board Director, Jim Holte 715.835.6708
District 9 Women's Chair, Mary Prestrud 715.647.2168
District 9 YFA Chair, Cindy Bourget 715.505.7676
District 9 Coordinator, Katie Mattison 866.355.7349
RMIC District Manager, Ken Truax 715.514.4477

We are here for you.

Call with questions or if you are interested in getting more involved in Farm Bureau!

We Need Your Email Address!



Newsletters are not the only way we stay in touch with Farm Bureau. Occasionally, I will send out email updates about upcoming events via email and we are FAR from having an email address for every member in our database. We would like your help in advancing our

approach to inform members about important events going on in Farm Bureau!

We also keep members up to date on important events on Wisconsin Farm Bureau Facebook pages. Head to Facebook and "like," Wisconsin Farm Bureau Federation, Wisconsin Ag in the Classroom and Wisconsin Farm Bureau Federation Young Farmer and Agriculturist Program.

If you have not received emails from me, please forward your email address to kmattison@wfbf.com with the subject line, EMAIL - Pierce, so I know you are from Pierce County Farm Bureau.

Thank you!

Katie Mattison
District 9 Coordinator

Soybean Science Kit

The Soybean Science kit is an engaging, interesting, hands-on approach that teaches students of all ages the physical properties of polymers and oil, while instilling an appreciation for the use of biological and renewable resources. This kit is filled with all that is necessary to incorporate learning about soybeans into almost any class, complete with lesson plans and supplies for 21 different interactive experiments and labs.

This kit is available for any educator in Pierce County to utilize. If you, or someone you know, are interested in reserving this kit for your classroom or have any questions please contact Monica Krings at 715.647.2168.

Winter

STORE PRODUCTS PROPERLY

Save money and disposal costs by storing products properly.

Prevent paints, stains and driveway sealers from freezing. Thousands of dollars in household products are thrown away each year that were damaged by freezing.

As you prepare for winter in Wisconsin, it is important to consider proper storage of chemicals, paints and other products that you have purchased throughout the spring and summer seasons.

Read the labels on the products you purchase, follow the directions carefully when applying, storing and disposing of products. You will keep your family safe, save money and protect the environment.

Pierce County offers special hazardous waste collection events in the Spring/April and Fall/September each year. These events give residents, farmers and businesses the opportunity to safely dispose of unwanted hazardous wastes.

PIERCE COUNTY SOLID WASTE DEPT./RECYCLING CENTER 715.273.3092
recycle@co.pierce.wi.us