

Shawano County Farm Bureau

PO Box 5550 Madison, WI 53705

Address Service Requested

Non Profit
Organization
US Postage
PAID
Platteville, WI 53818
Permit No. 124



For information about our farm safety campaign, contact your local Rural Mutual agent.

Rural Mutual Agents in Shawano County:

Ben Albrecht
(715) 803-4030
Troy Senzig
(715) 851-4272

Chandas Thompson
(715) 803-4030
Tom Gustafson, District Manager
(920) 420-1106

Wisconsin Farm Bureau Federation

Policy Development Meeting Announcement

The Shawano County Farm Bureau policy development meeting will be held at 7 p.m. on **Thursday, August 20**, at the Shawano County Rural Insurance and Farm Bureau office, 1473 E. Green Bay Street in Shawano. All Farm Bureau members are welcome to attend and discuss ideas for resolutions to be presented for approval at the annual meeting.

For more information, please contact Adam Kuczer at 920.822.2772 or abkuczer@netnet.net.



About 100 Participate in the Dairy Dash and Stroll By Ashley Schugel

The second annual Dairy Dash and Stroll was a huge success with 108 runner and walkers registered and 96 who participated in the event.

Many thanks to Kellie Zahn, Kristi Fiedler, Bob Krause and the Shawano County Farm Bureau Dairy Committee for all their assistance making this year's event even bigger and better than last year.



After the Dairy Dash and Stroll it was time for a hearty breakfast.



Lots of fun happened on the farm.



Dairy Dash runners headed down the home stretch to the finish line at the farm yard.

Help in the Farm Bureau Fair Ice Cream Stand

Have you ever wondered why people come to the fair?

There are so many reasons why people come to the area's best fair. Some come to see the farm equipment, watch cattle shows and tour the barns.

Others look at the exhibits such as baking, sewing, arts and crafts or participate in wine and cheese tasting.

Some attend for the entertainment like the rides, stock car racing, music or bingo.

Others come for the food and socialization. They enjoy cream puffs and supporting the local food stands. These people reconnect with family and friends while they check out the fair. Some people combine their reasons. They support the local food stands with their time. Their efforts are what make the local stands successful.

Farm Bureau has a specialty stand. It takes 50 to 60 people to scoop ice cream during the fair. Each volunteer works about three hours. Those unable to scoop can take orders or collect money.

Help is needed Thursday evening through Monday. For more information, please contact Mary Olson at 715.758.8348 or maydofarms@granitewave.com.

If you are unable to work at the stand come and support the Farm Bureau by purchasing an ice cream treat. See you at the fair!





COUNTYnews

SHAWANO COUNTY FARM BUREAU EDITION

Shawano Breakfast on the Farm Draws a Crowd By Deb Mielke

Another Brunch on the Farm is history.

The 32nd annual Shawano County Brunch on the Farm was held on June 28 at Al and Vicky Beran's dairy in Birnamwood.

We were blessed with a beautiful day! About 90 people participated in the 5K Dairy Dash and Stroll, about 50 attended the worship service and more than 2,500 people enjoyed the delicious breakfast.

There were lots of activities for guests to participate in, especially the young ones.

Our goal for the brunch is to teach attendees about where their food comes from, how farmers care for their animals and their land. We also try to dispel the myths that they may have. I think our mission was accomplished!

Many thanks to the members of the dairy committee, the generous donors and all of the volunteers. It takes all of us to host an event of this magnitude and to do it successfully.

Thank you to Al and Vicky Beran and their family including their extended families. It was a pleasure working with them. What a shining example of a family farm!



This mechanical milking cow might not be real but she sure drew a crowd.



The parking crew got everyone there in good order.



Ken Natzke's interactive farm diorama was a new feature.



The cooking crew kept things moving on the grills.

INSIDE THIS ISSUE:

- 2** YFA Report
- Women's Committee Report
- Ag in the Classroom Recap

- 3** Heat-Related Illness
- District 7 Report
- Annual Meeting Date
- Save Can Pop Tabs
- Member Benefits
- Board Contacts



Guided farm tours attracted a lot of visitors.



Shawano County Dairy Promotion Association members kept the ice cream coming.



Kids tested their skills in the kiddie tractor pull.



Folks of all ages had close encounters with farm animals in the petting zoo.



Beef samples were available to attendees.



Dupont Cheese let consumers taste some different ways to enjoy Wisconsin cheese.

District 7 YFA Report By Kristi and Brian Fiedler



Upcoming events for District 7:

August 16, 1 p.m.

District 7 YFA Tubing Trip

A Sunday fun-day relaxing two hour float down the beautiful Wolf River in Shawano. Adult tube rentals are \$12 and kids 12 and under are \$10. Floating coolers are available for \$10. For more information, visit www.mountainbayout-fitters.com/#!trips--rentals/clzlw.

Please RSVP by August 14 to kfiedler@crinet.com or 920.737.7640.

September 9, 7 p.m.

District 7 YFA Discussion Meet

CRI Resource Center, 117 East Green Bay St.

A buffet style dinner will be served. Contestant meals will be sponsored by their county. All others are \$8 per person. Please RSVP by **September 6** to kfiedler@crinet.com or 920.737.7640.

Question 5 will be discussed at the District Discussion Meet.

5. How can we influence state and local policy that more effectively balances the social and economic interests of farmers and ranchers versus burdensome federal regulation?

Brian and I wish everyone a wonderful end of summer!

Hello from the Shawano Women's Committee By Angie Schultz

Ronald McDonald House donations. We want to thank everyone who donated items for the Ronald McDonald House. We had a van full of items that were needed and appreciated by families going through a difficult time.

The committee believes that Shawano County can do more and decided to ask for collections again. We will be collecting items from now until September in hopes to top our last delivery. If you think that you can help families, review the list and if you have questions, please contact Angie Schultz at 715.526.1953.

Family welcome bags include:

- a reusable bag like those you see and use at the grocery store
- travel size soap, shampoo and conditioner
- tooth paste, tooth brushes and dental floss
- a new stuffed animal
- a deck of cards

Items that the house needs:

- canned goods
- non-perishable food items
- paper products including facial tissue, toilet paper, paper towels
- trash bags
- aluminum foil, plastic wrap and sandwich bags
- laundry detergent and fabric softener
- cleaning products including sponges, dishwashing liquid, dishwasher detergent
- bath and bedroom items including towels, shower curtains, sheets and pillow cases
- entertainment products including games, puzzles, movies, books, art supplies

June Dairy Month promotions. Our committee started the month with Mary Olson handing out ice cream at LakeLand Industries. One of the employees gave a speech of thanks to our committee for visiting and handing out ice cream.

Later, we had our meeting and judged the annual coloring contest entries. We had a difficult time judging the colored cows and shared a few laughs at the pink socks, colorful polka dots and blue cows.



Ronald McDonald House helpers accepted the items from the Shawano women's committee.



Shawano women's committee members judged the entries in this year's June Dairy Month coloring contest.



Elizabeth Schmidt (left) distributed samples of summer sausage while Georgia Schultz prepared more at Charlie's County Market.

I delivered prizes to the schools. The prizes included an ice cream treat, a dairy key chain and other dairy items.

Joy, Dorothy and Joann handed out cheese and cracker samples at the assisted living home in Shawano. The cheese always is a hit and there is never leftovers. They enjoyed socializing with the residents and talked about how farming and cheese has changed.

For the brunch on the farm, the women's committee sponsored two of the My American Farm tablet kiosks. Leo Schultz helped younger kids get through the games. We ended the month with gratitude for all of the new friends who we met.

July Beef Month promotion. On July 3 we had a beef promotion at Charlie's County Market in Shawano. We started at 10 a.m. with beef summer sausage and beef flyers and by 2 p.m. everything was gone. We enjoyed handing out samples of sausage with pretzels and literature on the nutritional value of beef and listened to consumer concerns about beef and other farm products.

This is the first year that we noticed concern in our local community and we realized that we need to start stressing education and promotion.

Farmers take great care to produce and sell the best products to customers and that message needs to be conveyed in a more positive way.

Upcoming meetings and events. We invite women to join us for our monthly meetings and any other activities throughout the month. The next meeting is the annual picnic that will start at 11 a.m. on **Wednesday, August 5**, at the Arbor View Gardens in Clintonville.

September 15 is the date for the next monthly meeting due to the fair and other activities.

Thank you and enjoy August. Stay safe and good health to you, your family and friends. God Bless.

Ag in the Classroom Recap

By Angie Schultz



Prizes were delivered to this year's Ag and Me essay contest winners.

Brunch on the Farm was the big event this month. I had my tent full of tattoos and Shawano County farm information as well as Wisconsin farm facts.



My American Farm tablets showed kids a fun way to learn about agriculture.

who were using information from another state because they did not know about the Ag in the Classroom web site.

I also gave them the Farm Facts of Shawano County and information about the Farm Bureau. I also informed them that the UW-Extension can help with food and nutrition information as well.

Tattoos are always a hit. I started with 100 of each character and by the end of the day, I was out of Holly Holstein, Curley the Beef Steer, Molly Macintosh and Berry Bunch.

We have some ideas to try when kids come to the farm for tours as well as things we want to try in the classroom. I will have to do more research and planning before I can make these ideas a reality.

Thank you to those who stopped in the Ag in the Classroom tent at the Brunch on the Farm and who helped with materials and participated in ag activities. God bless.

For Ag in the Classroom, the first project in June was to finish handing out treats and prizes to the local essay winners.

Thank you to the women's committee for helping with the essay judging.

The Shawano County Brunch on the Farm was the big event this month. I had my tent full of tattoos and Shawano County farm information as well as Wisconsin farm facts.

My kids and I answered questions that attendees had about farming. We tried to answer with what we do or how we do it because all farms are different.

I handed out informational packets on apples and maple syrup. I also talked to a few nutritional workers



Kids were lined up to get their Fun Faces of Agriculture tattoos.

There are Benefits to Your Farm Bureau Membership:

Auto

- General Motors Discount

Health

- ScriptSave® Prescription Drug Savings Card
- Stroke Detection Plus

Supplies and Products

- Case IH
- FS-GROWMARK Patronage
- Grainger
- Polaris
- Office Depot

Communication

- AgriVisor
- The Country Today

Insurance

- Rural Mutual Insurance Company
- Farm Bureau Financial Services

Travel

- AAA
- AVIS Car Rental Discount Program
- Choice Hotels International, Inc.
- Wyndham Hotel Group

Financial

- AgriPlan Medical Reimbursement Program
- Farm Bureau Bank

Protection

- \$500 Reward Protection Program
- Accidental Death Policy

For complete details visit wfbf.com/benefits-membership.

Rising Temperatures Increase Risk of Heat-Related Illness

Submitted by the **Rural Health Initiative**

Why it matters and what you can do to prevent it

Safety First

You've heard the saying multiple times, but with rising seasonal temperatures projected in July and August, it's critical for agricultural workers to take proactive steps to prevent heat-related illness.

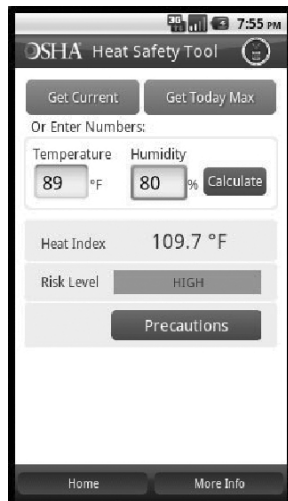
The Rural Health Initiative cares about your safety and health and reminds you that heat-related illness is serious, yet preventable.

Heat Index: What it Means and Why It Matters

The heat index is how hot the weather feels. It is determined by the air temperature and relative humidity. The higher the heat index, the higher the risk for heat-related illness.

Individuals at a higher risk include outdoor workers, especially those who:

- Work in direct sunlight, which can increase the heat index values by 15 degrees.
- Wear heavy protective clothing.
- Have been affected by heat-related illness before.



Know the Types and Symptoms of Heat-Related Illness

Heat exhaustion: dizziness, headache, sweaty skin, fast heart-beat, nausea, vomiting, weakness and muscle cramps.

Heat stroke: red, hot, dry skin. High body temperature, confusion, fainting and convulsions.

If you or someone else has any of these symptoms, move to a shaded area immediately, drink a cup of cool water and remove any heavy clothing. If symptoms continue, call for help. Heat stroke is a more severe condition than heat exhaustion and can result in death.

Five Ways to Keep Yourself Safe

1. Drink a small cup of cool water every 15 minutes, even if you don't feel thirsty. Avoid caffeine and alcoholic beverages.
2. Wear a hat and light colored clothing.
3. Schedule breaks in the shade.
4. Gradually increase workload to build a tolerance for working in the heat. This process is called acclimatization.
5. Download the OSHA Heat Safety Tool app available in English and Spanish for Android and iPhone devices, to calculate the heat index, risk level and learn protective measures that you can take to prevent illness.

Source: *Occupational Safety and Health Administration (OSHA) and Oregon OSHA*

For more information, visit www.wiruralhealth.org, connect with us on Facebook and Twitter or contact Program Manager Shaya Hintz at 715.524.1488 or shaya@rhiwi.org.

Humor Corner By Wes Raddatz

What happens to liars when they die?
They lie still.

Why does a stork stand on one leg?
If he'd lift the other leg, he'd fall down.

Minutes at the table don't cause weight gain....It's the seconds.

It's strange how much you've got to know before you know how little you know.



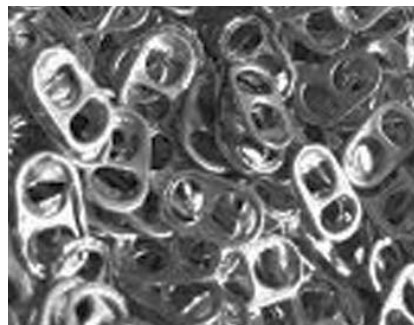
Save Your Can Pop Tabs

The state Women's Committee is once again collecting pop tabs for the Ronald McDonald's House.

Last year 734 pounds were collected, which is the equivalent to more than one million tabs.

The committee members have set a goal of 700 pounds for this year.

If you are interesting in contributing, please contact Katelin Haglund at 715.210.5384. Help District 7 lead the state!



Shawano County Farm Bureau Contacts:

President, Debbie Mielke 715.754.2694
Vice President, Adam Kuczer 920.609.0718
Secretary/Treasurer, Donald Pahlow 715.823.4048
Women's Chair, Angie Schultz 715.584.4287
YFA Chair, Ashley Schugel 320.510.1312

Director, Sheri Beilke 715.881.1984
Director, Scott Breitrack 715.851.4710
Director, Neil Christianson 715.758.2346
Director, David Henselin 715.853.7494
Director, Robert Krause 715.853.6969
Director, Donald Radloff 715.853.6086
Director, Peter Schmidt 715.853.5150
Director, Chris Voelz 715.223.7190
Director, Gordon Wesener 715.851.2249

Shawano County Farm Bureau 877.583.4438
WFBF Board Director, Wayne Staidl 715.582.3671
District 7 Coordinator, Wes Raddatz 866.355.7346
RMIC District Manager, Tom Gustafson 920.420.1106

District 7 Board Report



The District 7 Member Information and Policy Development meeting will be held at 7 p.m. on Monday, August 10 at the River Rail Restaurant, N5547 River Street, in Shiocton.

All Farm Bureau members are invited to attend.

We will have a fun and educational event that is something totally new. After the meal we will have a Discussion Meet similar to the YFA program contest, but one that members older than 35 years can participate in.

Wendy Kannel, the new WFBF director of training and leadership development, will be helping host the event.

We also will discuss ag issues and potential WFBF policies. Paul Zimmerman from the WFBF governmental relations staff will assist, so bring your thoughts, concerns and ideas.

For more information, please contact your county Farm Bureau board members. Your county Farm Bureau will cover the meal cost for members who want to attend.

Wayne Staidl
WFBF District 7 Director

Shawano County Annual Meeting

The 2015 Shawano County Farm Bureau annual meeting will be at 8 p.m. on **Thursday, October 15**, at the Woodland Restaurant in Gresham.

UW Extension Agent Jamie Patton will show her video of the 2015 Brunch on the Farm during the event.

SAVE the DATE