

# Waukesha County Farm Bureau

PO Box 5550 Madison, WI 53705

Address Service Requested

Non Profit  
Organization  
US Postage  
**PAID**  
Platteville, WI 53818  
Permit No. 124



For information on farm insurance, contact  
your local Rural Mutual agent.

## Rural Mutual Agents in Waukesha County:

<b>Graig Beckstrand</b> (262) 378-5009	<b>Peter Opie</b> (262) 436-0200	<b>Melissa Probst</b> (414) 916-2449
<b>Ann Hubbell</b> (262) 542-4093	<b>Anthony Pirozzoli</b> (262) 758-2713	<b>Charles Reitz</b> (262) 786-0600
<b>Joseph DeGuiseppe</b> (262) 424-6668	<b>Linda Schopen - District Manager</b>	

## Wisconsin Farm Bureau Federation

### Ronald McDonald Event

"The best meals in town!"

That's what the residents of the Milwaukee Ronald McDonald House said on Saturday, May 3. Women and men from six counties around District 1 came together to make and serve brunch, lunch and dinner.

With delicious fruit salads, egg casseroles, French toast, sausages and a wonderful array of muffins and breakfast breads along with juice and milk, Ozaukee, Walworth and Waukesha counties got families ready to start their day.

Jefferson and Racine County Farm Bureau members made and packed lunches for everyone in the afternoon. This allowed families to quickly grab them on their way to the hospital on Sunday morning.

When families returned from the hospital that evening, Kenosha and Walworth counties had their dinners waiting for them. Pork chops, cheesy potatoes, vegetable and lots of salads. A meal would not be complete without dessert, and there were many wonderful choices.



Thank you to those who helped at the Ronald McDonald House. Pictured (L to R) are **Bill Grenzow (Walworth)**, **Kathleen Papcke (Walworth)**, **Carol Bartholomew (Waukesha)**, **Judy Porter (Waukesha)** and **Patti Roden (Ozaukee)**.

Besides food we left the house with \$325 for their wish list including a variety of activities for the children and snacks for the people staying there. Let's not forget about the pop tabs. With the annual Tab Toss being held on May 17, District 1 gave them a head start with close to 79 pounds of pop tabs.

BUT don't stop collecting pop tabs! We have a state challenge that goes until the WFBF Annual Meeting in Wisconsin Dells, December 5-8.

In 2013, pop tab recycling generated nearly \$30,000 in revenue for the Milwaukee Ronald McDonald House.

Thank you to all who gave of their time or donated food, money and wish list items.

District 1 is awesome.

**Kathleen Papcke**  
District 1 Women's Committee Representative

### Family Farm Weekend Planned

The Milwaukee County Zoo welcomes families to enjoy a bushel full of fun and activity down on our farm, as Family Farm Weekend, sponsored by Wisconsin Milk Marketing Board, takes place Saturday and Sunday, September 6 and 7.

Most of the day's activities will be in the Zoo's Northwestern Mutual Family Farm, the last working farm in the city of Milwaukee, complete with dairy cows and a milking parlor. The weekend features activities like food demonstrations, children's pedal tractor-pull contest and a local farmer's market featuring fresh goodies like maple sugar, fruits and gourmet hot sauces.

There's something for everyone to enjoy during Family Farm Weekend at the Zoo. Activities take place both days from 9:30 a.m. to 3 p.m. All activities are free with regular Zoo admission.

Farm Bureau volunteers will be helping at the Milwaukee County Zoo for the Family Farm Weekend. We look forward to seeing you at the Milwaukee County Zoo!



Attendees enjoying last year's Family Farm Weekend.

### Ag Venture Playland is a Great Place for Kids!

Bring your kids, grand-kids, and the neighbors' kids to this year's Ag Venture playland at the Waukesha County Fair. Inside the playland this year look for pony rides, swing sets, baby animal petting area and a huge sand box. After all that play don't forget to take a short walk over to the Waukesha County Dairy Promotion milk booth for "all you can drink milk." These and many more memories are waiting for you at the fair. For more information and tickets go to [WaukeshaCountyFair.com](http://WaukeshaCountyFair.com)

Mark your calendars now for the Waukesha County Fair, July 16-20.



# COUNTYnews

WAUKESHA COUNTY FARM BUREAU EDITION

## YFA Events Draw Crowds

The 7<sup>th</sup> annual District 1 YFA Spring Fling was held on Saturday, March 29 at The Columbian in West Bend. The Mantz Brothers had an outstanding performance and packed the venue with more than 725 people.



Ryan Brueggemann enjoyed the YFA Spring Fling with Washington County YFA member Bill Weber and Ozaukee County YFA member Becky Roden.



Waukesha County YFA members Ryan Brueggemann and Sean and Jennifer Beres attended the District 1 Brewers game.



On April 26, 40 District 1 Farm Bureau members attended the Milwaukee Brewers game. The Milwaukee Brewers beat the Chicago Cubs with a score of 5-3 and everyone had a great time!

## INSIDE THIS ISSUE:

### 2 YFA Contests

Ag Women's Summit  
County Annual Meeting  
Ag Day at the Capitol

### 3 Member Benefits

Pop Tabs Wanted  
Waukesha Museum Free  
Membership Goal Met  
Scholarship Deadline  
PD Meeting Planned

## YFA Members! Mark your Calendars!

There are great opportunities for YFA members in Waukesha County to participate in district and state events. Remember that these activities are available to voting members ages 18-35.

**Discussion Meet:** The District 1 Discussion Meet has been set for **Tuesday, August 19** at Williams Homestead Farm (W289N520 Elmhurst Drive, Waukesha). A farm tour will be at 6 p.m. with the Discussion Meet starting at 7 p.m. Snacks will be available following the Discussion Meet. The Discussion Meet is an activity designed to build crucial skills in young, active farmers and agriculturalists. By participating, members build basic discussion skills, develop a keen understanding of important agricultural issues and explore how groups can pool knowledge to



In January, 2013 Discussion Meet winner Chris Pollack was a National Discussion Meet finalist and for that won a tractor from CASE IH

reach consensus and solve problems. This year's topic is: **How can young farmers and ranchers work to encourage membership growth and member engagement for the county, state and national Farm Bureau organizations?**

**Achievement Award:** The ideal candidate(s) for the Achievement Award is an individual or couple involved in production agriculture with a majority of their income subject to normal production risks. Selection of the winning YFA competitor is based on his/her efforts in production agriculture and leadership achievement. Participation in this program with individual recognition and the resulting publicity will help build the organization. **Applications are due July 1, 2014.**



2013 Achievement Award winners Corey and Miranda Leis.

### Excellence in Agriculture:

The Farm Bureau Excellence in Agriculture Award Program is designed as an opportunity for YFA members, while actively contributing and growing through their involvement in Farm Bureau and agriculture, to earn recognition. Participants will be judged on their involvement in agriculture, leadership ability, involvement and participation in Farm Bureau and other organizations (i.e., civic, service and community). The ideal candidate(s) for the Excellence in Agriculture Award is an individual or couple who do not have the majority of their income subject to normal production risk. **Applications are due July 1, 2014.**



2013 Excellence in Ag winner Nicole Reese.

If you are a YFA member interested in participating in any of these activities, please contact Peter Muth, District 1 YFA Representative, at 262.689.2536.

## Wisconsin Ag Women's Summit

The 2014 Wisconsin Ag Women's Summit took place March 14 and 15 in Madison. Keynote speaker Chariti Gent opened the summit by teaching us how to chart our course through choppy waters by ignoring the "gremlins" and follow our inner "captain". Several breakout sessions were included both days, such as finances, management, leadership, technology (including social networking), herd health and even "stay" cations.



Back L-R: Sandy Porter, Judy Porter, Jane Craig  
Front L-R: Elizabeth Wissner, Bev Meissner, Amy Steinhauer

Friday night we shared in a wonderful meal and congratulated the AgVocates of the Year, Laura Daniels and Karyn Schauf, after which we laughed the remainder of the night away with entertainment from Comedy City. Saturday morning offered zumba or a bootcamp workout, as well as a Q&A session with the AgVocates of the Year. One more set of breakout sessions before lunch and a concluding presentation once again by Chariti Gent.

A wonderful weekend of networking and meeting new friends (as well as old) was had by all!

## Annual Meeting Date Set

The Waukesha County Farm Bureau annual meeting date has been set for **Thursday, October 2** at The Machine Shed. *Watch your mailbox for a postcard with further details as the meeting date approaches.*

save • the • date  
10 • 02 • 14

## Members Attend Ag Day at the Capitol

Members of Waukesha County Farm Bureau attended the annual Ag Day at the Capitol for legislative briefings and capitol visits. The day began at the Monona Terrace Convention Center where we were briefed on current legislation issues and addressed by Governor Walker. The major topics that we were briefed on included implements of husbandry, groundwater, raw milk, use value assessment of farmland and animal welfare.



Members of Waukesha County met with legislators at the Capitol. We had a productive discussion with them and covered a wide variety of topics. Thank you to Bob and Carol Bartholomew, Ryan Brueggemann, Randy and Jane Craig, Jim McCarthy, Tom Oberhaus, Jim Renn, Ken Rosenow, Dave Swan and Lloyd Williams who raised their voices and attended from Waukesha County Farm Bureau.



Whether or not you attended Ag Day at the Capitol, it is important for all of us to raise our voice on issues. Take a few minutes to be familiar with an issue that is affecting you and call your legislators. Inform them how important agriculture is in Waukesha County and share your views on topics and how they affect your farm. Remember when you talk to your legislators to be respectful and thank them for their support of agriculture.

Be heard and raise your voice for agriculture!



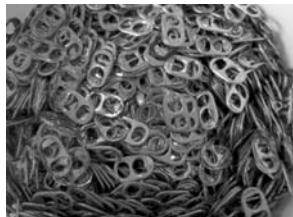
## There are Benefits to Your Farm Bureau Membership:

<b>Auto</b>	<b>Health</b>	<b>Supplies and Products</b>
• General Motors Discount	• ScriptSave® Prescription Drug Savings Card	• Case IH
<b>Communication</b>	• Stroke Detection Plus	• FS-GROWMARK Patronage
• AgriVisor (NEW)	<b>Insurance</b>	• Grainger
• The Country Today	• Rural Mutual Insurance Company	• Office Depot
<b>Financial</b>	• Farm Bureau Financial Services	<b>Travel</b>
• AgriPlan Medical Reimbursement Program	<b>Protection</b>	• AAA
• Farm Bureau Bank	• \$500 Reward Protection Program	• AVIS Car Rental Discount Program
	• Accidental Death Policy	• Choice Hotels International, Inc.
		• Wyndham Hotel Group

For complete details visit [wfbf.com/benefits-membership](http://wfbf.com/benefits-membership).

## Pop Tabs Wanted!

Keep saving your pop tabs for the Ronald McDonald House! Ronald McDonald House is a “home away from home” for families of seriously ill or injured children. Since their doors opened in 1984, more than 35,000 families have stayed at the Ronald McDonald House in Milwaukee while their child received critical medical care. In 2013 alone, they served nearly 1,000 families. They have been at full occupancy with 38 guest rooms—often with a wait list of anywhere from five to twenty families each day.



Since 2000, little aluminum tabs on the tops of soda cans have meant more than \$210,000 to the Ronald McDonald House. Revenue from recycling these little bits of aluminum helps provide a home away from home for families whose seriously ill children are undergoing treatment in the Milwaukee area.

Pop Tab Revenue History for the Ronald McDonald House:

- 2013 - \$29,250
- 2012 - \$26,200
- 2011 - \$24,506
- 2010 - \$26,171
- 2009 - \$14,845

At the District 1 Ronald McDonald House event on May 3, 78.85 pounds of pop tabs were collected. Each district is having a competition that goes through December 2014, so keep saving your pop tabs.

Let's help make a difference and save your pop tabs! Any pop tabs that you have can be given to any member of the Waukesha County Farm Bureau board.

## FREE Admission to Waukesha County Museum Available for Members

The Waukesha County Museum has received a \$1,000 donation from members of the Waukesha County Farm Bureau.

The Waukesha County Farm Bureau board of directors approved the donation to help promote the local museum and to help serve Waukesha County residents. In exchange for the donation, all Waukesha County Farm Bureau members receive free admission to the museum in 2014.

“We are happy to be able to help the community and offer free admission to Farm Bureau members who are interested in visiting the Waukesha County Museum,” said Lloyd Williams, Waukesha County Farm Bureau president.

The Waukesha County Museum is located at 101 West Main Street in Waukesha. Its hours of operation are Tuesday through Saturday 10 a.m. until 4:30 p.m. daily. The museum is closed on Sundays, Mondays and some holidays.

## 2014 County Fairs in District 1

<b>Jefferson County Fair</b>	<b>July 9 - 13</b>
<b>Waukesha County Fair</b>	<b>July 16 - 20</b>
<b>Washington County Fair</b>	<b>July 22 - 27</b>
<b>Racine County Fair</b>	<b>July 23 - 27</b>
<b>Ozaukee County Fair</b>	<b>July 30 - August 3</b>
<b>Kenosha County Fair</b>	<b>August 13-17</b>
<b>Walworth County Fair</b>	<b>August 27 - September 1</b>

## Membership Goal Achieved!

Congratulations to all the volunteers who put their time and effort into this year's membership drive. With your help, we reached our new voting goal by the April 30 deadline. This achievement entitles our county to receive \$1,000 from WFBF.

Volunteers who signed up new members will receive \$20 per member signed from WFBF. The WFBF incentive program for signing new members continues until September 30.

In addition, Farm Bureau volunteers qualify as members of the Producer Club by signing five or more new Farm Bureau members during the membership year. Members of the 2014 Producer Club will enjoy an exclusive gathering for members and spouse/guest at the 2014 WFBF Annual Meeting in December. Producer Club members also receive a commemorative pin and special gift in recognition of their efforts.

## Scholarship Deadline is June 30

- \$500 is available per student
- Waukesha County residents attending an institution of higher education (College, University, Technical School, etc.) for the upcoming school year.
- Eligibility is open to Waukesha County residents interested in pursuing a field of study leading to an agricultural-related career, which may be determined on a very broad basis.
- Applications are available on the web ([wfbf.com/countyfarmbureaus/waukesha](http://wfbf.com/countyfarmbureaus/waukesha))
- Applications due to the Scholarship Committee by June 30



## Waukesha County Farm Bureau Contacts:

President, Lloyd Williams	262.646.2436
Vice President, Thomas Oberhaus	262.968.2573
Secretary, John Meissner	262.538.1313
Treasurer, David Bartholomew	262.366.2366
Women's Chair, Judy Porter	262.363.7397
YFA Chair, Ryan Brueggemann	414.429.5499

Director, Bob Bartholomew	262.662.2782
Director, Randy Craig	262.662.4623
Director, Kevin McCarthy	262.363.8769
Director, David Morris	262.367.3012
Director, Scott Porter	262.363.5925
Director, James Renn	262.367.4427
Director, Ken Rosenow	920.474.7128
Director, Alan Runyard	262.468.4408
Director, Robert Schuett, III	262.968.4348
Director, Bob Stigler	414.378.7659
Director, David Swan	262.691.0471
Director, Ronald Williams	262.968.3297

Waukesha County Farm Bureau	877.483.3674
District 1 Coordinator, Patti Roden	866.355.7341
WFBF Board Director, Dave Daniels	262.878.5035
RMIC District Manager, Linda Schopen	877.483.3674

## Women's Spring Fling Held March 29

The District 1 Women's Spring Fling was hosted by Kenosha County and held on Saturday, March 29 at the Civil War Museum. Everyone in attendance had a great time.



## District 1 Policy Development Meeting Scheduled

The District 1 Policy Development meeting is scheduled for Thursday, August 7 at 7 p.m. at The Machine Shed (N14W24145 Tower Place, Pewaukee, WI 53072).

For more information about the policy development meeting contact Patti Roden at [proden@wfbf.com](mailto:proden@wfbf.com).