

# Jefferson County Farm Bureau

PO Box 5550 Madison, WI 53705

Address Service Requested

Non Profit  
Organization  
US Postage  
**PAID**  
Platteville, WI 53818  
Permit No. 124



For information about our farm safety campaign, contact your local Rural Mutual agent.

### Rural Mutual Agents in Jefferson County:

<b>Tom Ames</b>	<b>Chad Wiedenhoft</b>
<b>Renee Blair-Soine</b>	(920) 563-9355
<b>Tom Murphy</b>	<b>Tim Finger</b>
(920) 262-9775	(920) 945-0447

Linda Schopen - District Manager

### Wisconsin Farm Bureau Federation









The Wisconsin Farm Bureau Federation invites you to attend  
**AG DAY AT THE CAPITOL**  
 March 11, 2015  
 Monona Terrace Convention Center • Madison, WI

<b>Schedule of Events:</b>	<b>Early Registration Deadline: March 5</b>
11:00 a.m. Registration	<b>Cost: \$25</b> per person by registration deadline.
11:30 a.m. Opening Program	<b>\$30</b> after deadline and at the door.
11:45 a.m. Lunch	
12:45 p.m. Legislative Briefing	
3:00 p.m. Leave for Capitol Visits	

Presented by: 

Thank You to Our Sponsors:

Ag Day at the Capitol is the largest gathering of farmers from across the state representing a variety of farm groups to learn more about state issues and meet with their state legislators.

Please RSVP by March 5 to Patti Roden at [proden@wfbf.com](mailto:proden@wfbf.com), 262.689.1838.

### Wisconsin Ag Women's Summit March 13-14

Women from the Wisconsin agriculture community are encouraged to attend the annual Wisconsin Ag Women's Summit at the Madison Marriott West in Middleton. The Wisconsin Ag Women's Summit is presented by Badgerland Financial, Wisconsin Farm Bureau Federation and University of Wisconsin-Extension. The purpose of the Wisconsin Ag Women's Summit is to connect women involved in all areas of Wisconsin's diverse agriculture community.

Go to [wfbf.com/programmevents/womens-program/wisconsin-ag-womens-summit](http://wfbf.com/programmevents/womens-program/wisconsin-ag-womens-summit) for the full schedule of events.

Register online by going to [wiagwomenssummit.wordpress.com/register](http://wiagwomenssummit.wordpress.com/register).





# COUNTYnews

JEFFERSON COUNTY FARM BUREAU EDITION

## 95<sup>th</sup> WFBF Annual Meeting Highlights

The 95<sup>th</sup> WFBF Annual Meeting and YFA Conference at the Kalahari Resorts in Wisconsin Dells was another success with a total of 475 young farmers and 700 attendees.

Farm Bureau members had the opportunity to attend workshops with interesting topics that included The Threat to the Agricultural Sector which was conducted by a CIA investigator; Hot Topics in Ag; Don't Let Meetings Drive You Crazy; Farming with Technology; and Writing Your Stories presented by Jerry Apps.



Jean Poulson and District 1 Director Dave Daniels caught up during the trade show.

fell on him and broke his neck leaving him a quadriplegic.

"It is not about I. It is go and help someone without being asked," Chad said.



Dan Poulson shook hands with WFBF President Jim Holte.

He also mentioned that this was his 3,379 conference since his paralysis. This was an excellent story of how he copes with his paralysis, does not feel sorry for himself and how he and his family continue to keep his elk farm thriving.

Monday morning, Steve Freese pointed out 2014 accomplishments:

1. Strategic Plan – Future of Farm Bureau
2. Women's Committee Restructuring
3. Implements of Husbandry
4. New Five Year Farm Bill

At the business resolutions session, Jefferson County delegates voted on the state and federal resolutions.

It was announced that WFBF raised more than \$70,000 in funds for the Ag in the Classroom Programs. Various fundraisers that were held included the Wisconsin Ag Open, YFA Raffle, trivia contest and 40 by 40 campaign.

On Saturday evening, Roger Radley, who was noted as the Funniest Former Farmer, was the entertainment. It was an entertainment show that kept everyone laughing.



Mary Mess checked out the FFA Alumni booth at the Trade Show.

Sunday morning, attendees listened to motivational speaker, Chad Hymas, whose topic was "Who Needs Legs When You Have Wings." Chad was a 27-year-old elk farmer when a 2,000 pound bale



Jefferson County delegates included Eugene Mess, Steve Jones, Tony Schadt, Roger Zimmerman, Randy Mitchell and Sue Marx.



The Jefferson County trivia team included Eugene and Mary Mess, Tony Schadt, Randy Mitchell and Steve and Dawn Jones.



### INSIDE THIS ISSUE:

- 2** District YFA Report
  - Fourth Grade Farm Tour
  - Sign a New Member
  - Soybean Science Kit
  - Grateful for Tabs
- 3** YFA Conference Update
  - Matching Grants
  - Essay Contest
  - Jefferson County Fair
  - YFA Spring Fling

## District YFA Updates By Peter Muth, District 1 YFA Representative

I hope everyone had a great time at the YFA Conference. We had 475 young farmers present! Mark Mayer from Ozaukee County won the Achievement Award contest and competed in San Diego, California, for the national contest.

During the Discussion Meet, Waukesha County member Amanda Carlson advanced to the semifinals. Everyone representing District 1 did an outstanding job. If you see them be sure to congratulate them.

We have a busy year ahead of us with a lot of activities planned in the district.

### District YFA Calendar of Events

April 11	Spring Fling at Circle B
April 26	Milwaukee Brewers Game
August 8	Mantz Brothers Concert at Roden Farm
TBD	Discussion Meet

For more details on upcoming YFA events, "Like" Jefferson County Farm Bureau and YFA on Facebook.



Many District 1 members attended the YFA Conference.

## 22<sup>nd</sup> Annual Fourth Grade Farm Tour

The 22<sup>nd</sup> annual Jefferson County Fourth Grade Farm Tour is set for Wednesday, May 6, at Kutz Dairy Farm in Jefferson. Kutz Dairy LLC milks 1,500 Jersey cows and raise 1,600 heifers at three different locations. They grow crops on 1,400 acres to feed the cows. The family farm is owned and operated by Ron and Pam Kutz, along with their three sons Aaron, Allan and Andrew.

In 2014, nearly 850 students from 23 schools attended, along with 43 teachers and 166 adults. Those attending spent nearly two hours learning about beef, sheep, agricultural careers, milking parlor, land conservation, animal health, dairy cows, soils, crops, calf barn, farm technology and tractors.

The day is not possible without all the great



volunteers, therefore we want to ask for your help. If you are interested in setting up for the event or serving lunch, please contact Walt Coussens at 920.988.9565.

Farm Bureau volunteers also are needed to make the sandwiches on May 5, to volunteer, please contact Mary Mess at 920.261.0735.

For more information, visit <http://jefferson-countyagribusinessclub.com>.

## Sign a NEW Member, Get \$20

County Farm Bureau volunteers will receive \$20 for every new voting or associate member they sign between October 1, 2014 and September 30, 2015.

Qualifying new members must (a) have no previous Farm Bureau membership or (b) be more than 25 months past their due date.

Volunteer membership workers signing up past-due membership renewals or new members between July 1 and September 30 will be entered in a drawing for one of five \$100 cash awards.

Volunteers signing ten or more renewals during this period also will be entered in the grand prize drawing for a trip for two to the AFBF Annual Meeting in Orlando, Florida, January 10-13, 2016.

For every new or past-due member signed, the membership worker must complete and mail in an entry card with the membership payment. A drawing will be held on September 30 (membership year-end).

If a Farm Bureau volunteer signs five or more new Farm Bureau members during the membership year (October 1, 2014-September 30, 2015), they will qualify as a Producer Club member and will enjoy an exclusive gathering for members and spouse-guest at the 96<sup>th</sup> WFBF Annual Meeting.

Producer Club members also receive a commemorative pin and a special gift in recognition of their efforts.

For more information or membership applications, contact Patti Roden at [proden@wfbf.com](mailto:proden@wfbf.com) or 262.689.1838.



**Please note:** Jefferson County Plat Books are available for purchase from any director for \$15.

## Soybean Science Kit Available To Teachers

The Soybean Science kit remains available to teachers in the county as a resource during science and agricultural units. The kit includes a teacher's guide to the many activities using different forms of soybeans.

Students can make their own crayons, candles and lip gloss; observe oil and water emulsions; float their own putt-putt boats and germinate or grow their own soybeans.

This is a great resource with a wide range of activities for grades 4 through 9.

For more information or to reserve the kit for use, please contact Shannon Lyon at 920.563.7811 or visit [www.wisagclassroom.org](http://www.wisagclassroom.org).



## Ronald McDonald House Grateful For Tabs

Saving pop tabs is easy and clean. They are compact, with a concentration of recyclable aluminum.

Unlike empty cans, they do not need to be rinsed. Since 2000, aluminum tabs on the tops of soda cans have meant nearly \$240,000 to the Ronald McDonald House.

Revenue from recycling these little bits of aluminum helps provide a home away from home for families whose seriously ill children are undergoing treatment in the Milwaukee area.

Keep saving those tabs! Give them to any board member so that Jefferson County receives credit.



## There are Benefits to Your Farm Bureau Membership:

### Auto .....

- General Motors Discount

### Health .....

- ScriptSave® Prescription Drug Savings Card
- Stroke Detection Plus

### Supplies and Products .....

- Case IH
- FS-GROWMARK Patronage
- Grainger
- Polaris
- Office Depot

### Communication .....

- AgriVisor
- The Country Today

### Insurance .....

- Rural Mutual Insurance Company
- Farm Bureau Financial Services

### Travel .....

- AAA
- AVIS Car Rental Discount Program
- Choice Hotels International, Inc.
- Wyndham Hotel Group

### Financial .....

- AgriPlan Medical Reimbursement Program
  - Farm Bureau Bank
- ### Protection .....
- \$500 Reward Protection Program
  - Accidental Death Policy

For complete details visit [wfbf.com/benefits-membership](http://wfbf.com/benefits-membership).

## YFA Conference Review

By Lindsay Knoebel, Jefferson County YFA Chair

The 95<sup>th</sup> WFBF Annual Meeting and YFA Conference was held December 5-7 at the Kalahari Resorts in Wisconsin Dells.

Jefferson County sent YFA members to the conference to learn more about agriculture and to network with other YFA members from throughout the state.

On Friday night conference attendees met with their respective district representatives and discussed upcoming events available for district members. Jefferson County is in District 1 and there are many upcoming events for YFA members to attend including a Milwaukee Admirals hockey game on January 23, a Brewer game in April, as well as the ever popular Spring Fling in April.

After the district meetings, the Friday night entertainment was provided by the country band The Mantz Brothers. This private show was enjoyed by all YFA members.

On Saturday morning, the 2014 YFA Discussion Meet kicked off. District 1 had three participants in this contest and they all represented District 1 extremely well. The Excellence in Ag contest and the Achievement Award contests also took place on Saturday. District 1 was represented well as the winner of the Achievement Award was Mark Mayer from Ozaukee County.

YFA members attended educational sessions on Saturday afternoon and learned about a variety of hot topics in ag, including ways to become an effective leader and how to be an advocate for agriculture in your community. The popular

trade show was available for conference attendees to walk through. A silent auction took place in the trade show that benefited the Wisconsin Farm Bureau Foundation.

Saturday night's entertainment was provided by comedian Rodger Radley. On Sunday morning YFA attendees could attend an early morning devotional, followed by a brunch and motivational speaker Chad Hymas who told his story of overcoming obstacles in life.

This speaker was involved in a farm related accident and is now paralyzed and confined to a wheel chair, but this has not stopped him from being a farmer and agriculture advocate.

The 2014 YFA conference concluded Sunday afternoon. For any YFA members interested in attending the conference in 2015, contact me for more information. This is a great educational and networking opportunity for any YFA members wanting to participate.



(L-R) Jordan Mantz, Jacki Roden, Holdan Mantz and Lindsay Knoebel posed for a photo. The Mantz Brothers played on Friday night at the YFA Conference.

## Jefferson County Fair Needs Help

It's not too early to start thinking about the Jefferson County Fair, which will be held July 8-12.

We could use your help working in the Cream Puff stand. The money raised is used for scholarships. Please give Farm Bureau some of your time this summer by working in the stand so that we may continue growing the scholarship fund.

Thank you in advance for your support and I'm looking forward to hearing from you. Please contact Mary Mess at 920.261.0735 to schedule your preferred volunteer time.



See you at the fair!

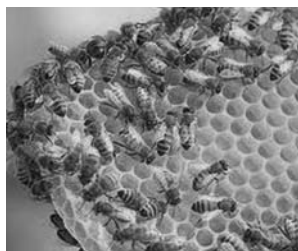
## Ag in the Classroom Essay Contest

*Why Are Bees Important To Wisconsin Agriculture?*

Each year Wisconsin Ag in the Classroom offers an essay contest for fourth- and fifth-grade students in all public, private and home schools, including 4-H clubs, Farm Bureau families and other organizations.

The 2014-2015 topic is "Why Are Bees Important To Wisconsin Agriculture?" County contest entries are due by April 1.

All rules, promotional materials, lessons and activities and other resources related to the essay contest and book program may be found at [www.wisagclassroom.org](http://www.wisagclassroom.org).



## Jefferson County Farm Bureau Contacts:

President, Randy Mitchell	414.899.4822
Vice President, Anthony Schadt	920.261.8478
Secretary-Treasurer, Melissa Gross	920.988.7583
Women's Chair, Mary Mess	920.248.1967
YFA Chair, Lindsay Knoebel	920.988.1428

Director, Norm Bradley	920.728.2434
Director, Steve Jones	262.495.8646
Director, Catherine Kleiber	920.478.9696
Director, Steve Knoebel	920.988.4866
Director, Suzanne Marx	262.582.3020
Director, Carrie Mess	920.988.7384
Director, Eugene Mess	920.261.0735
Director, John Morris	920.262.9490
Director, Dan Poulson	262.495.2439
Director, Adam Walter	920.699.2912
Director, Roger Zimmerman	920.390.0657

Jefferson County Farm Bureau	877.432.9480
District 1 Coordinator, Patti Roden	866.355.7341
WFBF Board Director, Dave Daniels	262.878.5035
RMIC District Manager, Linda Schopen	262.522.8620

## Matching Grants Available

The Wisconsin Ag in the Classroom Program is accepting applications for matching grants that will be awarded to groups that promote agricultural literacy in K-12 schools.

Ag in the Classroom will award up to \$500 to groups sponsoring programs or projects that promote agricultural literacy. Projects considered for grants must be targeted to grades pre-K through 12 and should enhance student knowledge of the contribution made by agriculture.

Projects that use funds toward an ongoing, sustainable education effort will receive preference over those that involve a one-time program. Applicants must have a matching source-funder for their project equal to the amount of the Ag in the Classroom grant. The application deadline for this grant is April 1.

Interested groups or schools can get an application on the Agriculture in the Classroom website at [www.wisagclassroom.org](http://www.wisagclassroom.org) under the Quick Links. You also may contact Ag in the Classroom Coordinator Wendy Kannel at [wkannel@wfbf.com](mailto:wkannel@wfbf.com) or 608.828.5719.

## Scholarships Applications are Due!

Scholarship applications are due April 15. The applications are available at your local high school guidance office or at [wfbf.com/county-farmbureaus/jefferson](http://wfbf.com/county-farmbureaus/jefferson). This is open to any Farm Bureau member's son or daughter who is entering a 2- or 4-year program.



## SAVE the DATE

### YFA Spring Fling

**Date:** Saturday, April 11  
**Time:** Band starts at 8 p.m.  
**Location:** Circle B, 626 Wisconsin 60 Trunk, Cedarburg  
**Tickets:** \$10 at the door, \$8 in advance  
**Band:** The Mantz Brothers