

INDIVIDUAL KALAHARI RESORT ROOM RESERVATIONS

Call 1-877-253-5466

Be sure to ask for the “**Wisconsin Farm Bureau Federation**” block of rooms

December 1 – December 4, 2017

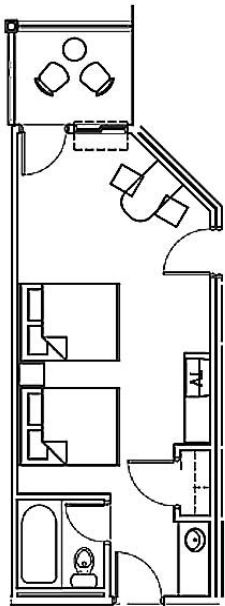
**Cut-off date for reservations is October 27th
Rooms are limited and will sell out quickly – reserve early!!**

- All reservations require a one night (plus tax) deposit for each room reserved at the time the reservation is made
 - ❖ **No personal checks** accepted for deposit or check-in
 - ❖ Reservations made with a credit card will be automatically charged right away for one night deposit for every room reserved.

Hotel registration starts at Noon. This will enable you to receive your waterpark passes.
You may **or may not** be able to actually check into your room at that time.



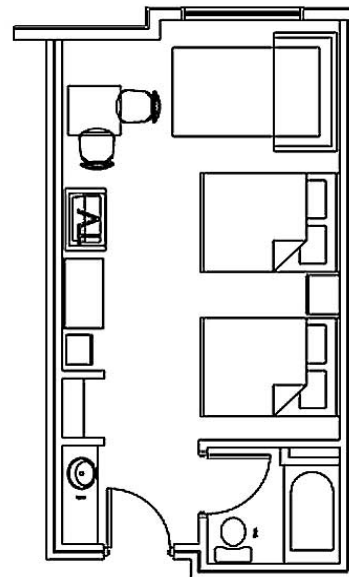
Hut Room
Wisconsin Dells, Wisconsin



Cost: \$109/night plus 12.25% tax (\$122.35)
Two queen beds / Work desk
Sleeps 4 people



Desert Room
Wisconsin Dells, Wisconsin

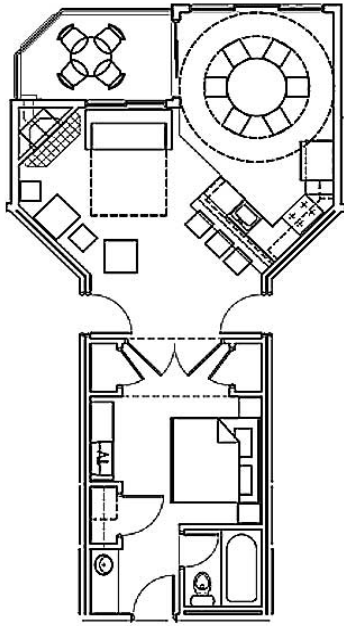


Cost: \$109/night plus 12.25% tax (\$122.35)
Two queen beds / full size sofa sleeper
Sleeps 4 people
** Up to two additional guests may be added for \$20/person per night

More Room Options on Reverse Side



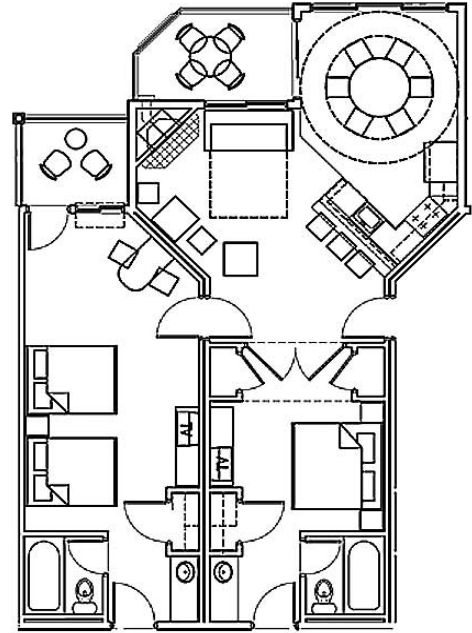
Lodge Room
Wisconsin Dells, Wisconsin



Cost: \$134 plus 12.25% tax (\$150.41)
One king bed plus one queen size sofa sleeper
Sleeps 4 people



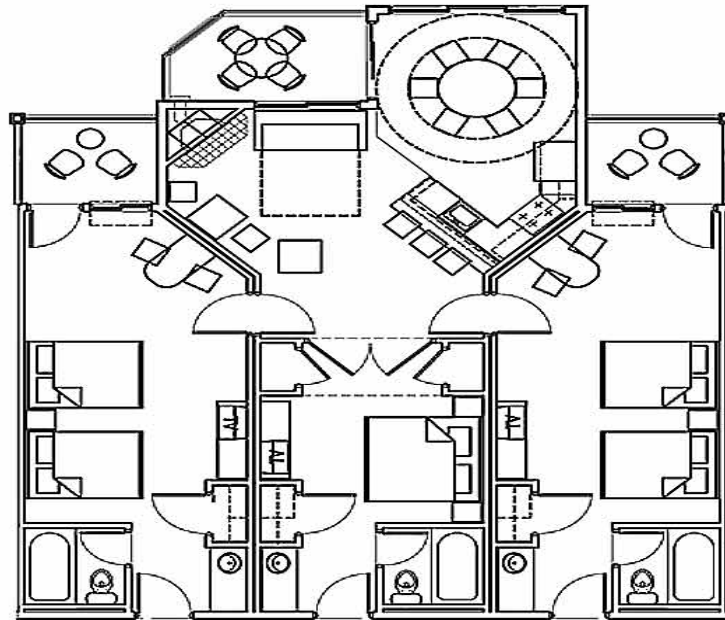
Combination Suite
Wisconsin Dells, Wisconsin



Cost: \$243 plus 12.25% tax (\$272.76)
Two bedrooms; one with king bed and one with two queen beds / queen size sofa sleeper in living room
Sleeps 8 people



Village Suite
Wisconsin Dells, Wisconsin



Cost: \$352/night plus 12.25% tax (\$395.12)
Three bedrooms; one with king bed and two with two queen beds / queen size sofa sleeper in living room
Sleeps 12 people