

INDIVIDUAL KALAHARI RESORT ROOM RESERVATIONS

Call 1.877.253.5466

Be sure to ask for the **‘Wisconsin Farm Bureau Federation’** block of rooms

November 30 – December 3, 2018

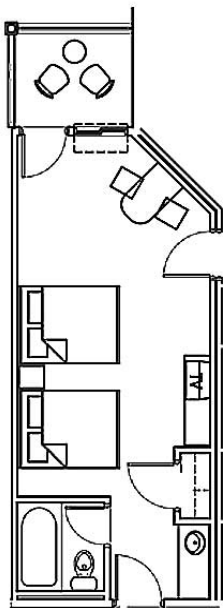
**Cut-off date for reservations is October 26
Rooms are limited and will sell out quickly – reserve early!**

- All reservations require a one-night (plus tax) deposit for each room reserved at the time the reservation is made
 - ❖ **No personal checks** accepted for deposit or check-in
 - ❖ Your credit card will be charged at the time of reservation for one-night deposit for each room reserved

Hotel registration starts at noon. This will enable you to receive your waterpark passes.
You may **or may not** be able to actually check into your room at that time.



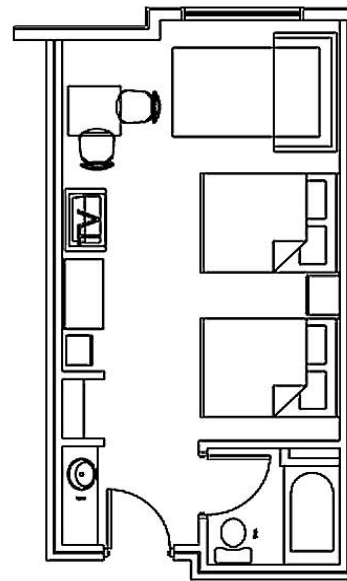
Hut Room
Wisconsin Dells, Wisconsin



Cost: \$109/night plus 12.25% tax (\$122.35)
Two queen beds / Work desk
Sleeps 4 people



Desert Room
Wisconsin Dells, Wisconsin

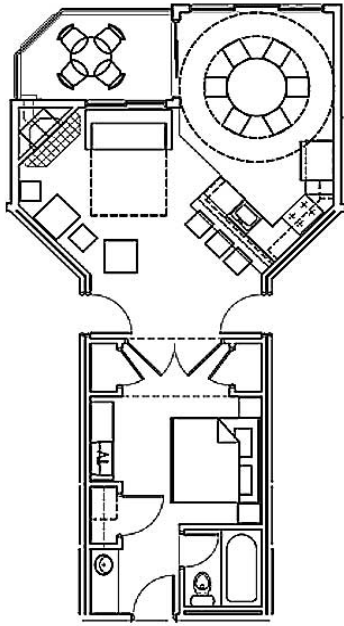


Cost: \$109/night plus 12.25% tax (\$122.35)
Two queen beds / full size sofa sleeper
Sleeps 4 people
** Up to two additional guests may be added for \$20/person per night

More Room Options on Reverse Side



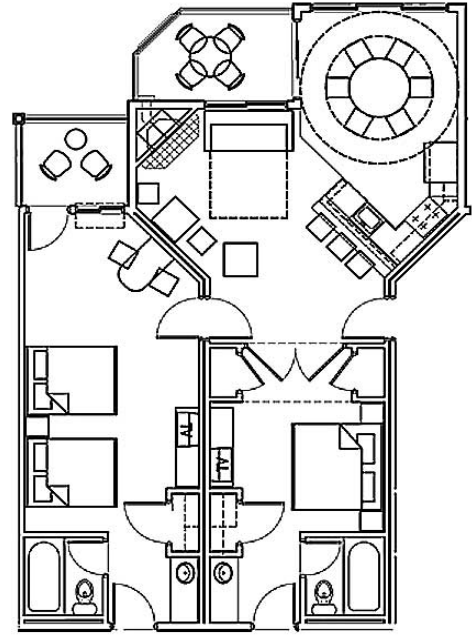
Lodge Room
Wisconsin Dells, Wisconsin



Cost: \$134 plus 12.25% tax (\$150.41)
One king bed plus one queen size sofa sleeper
Sleeps 4 people



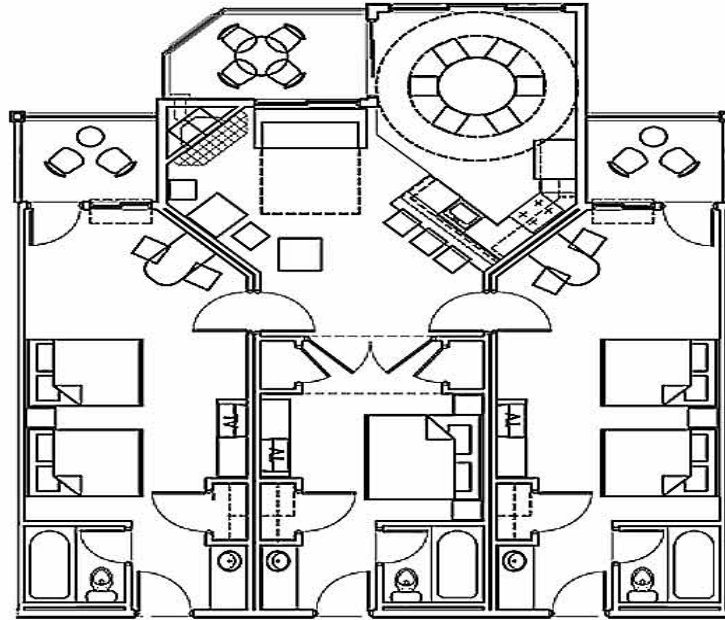
Combination Suite
Wisconsin Dells, Wisconsin



Cost: \$243 plus 12.25% tax (\$272.76)
Two bedrooms; one with king bed and one with two queen beds / queen size sofa sleeper in living room
Sleeps 8 people



Village Suite
Wisconsin Dells, Wisconsin



Cost: \$352/night plus 12.25% tax (\$395.12)
Three bedrooms; one with king bed and two with two queen beds / queen size sofa sleeper in living room
Sleeps 12 people