



Grassroots

District 6 News

Spring Is Coming



Rosie Lisowe

WFBF District 6 Director

Spring always seems like a fresh start. The plants begin grow, trees and bushes start to bud and everything begins to turn green. The start of a new season, a fresh start.

As farmers, we get spring fever as we start to work the fields, and prepare to plant. We know the importance of our decisions on the farm and we do everything to continue and improve the outcomes for our consumers and ourselves. Farming isn't a job, it's a way of life.

I want every farmer to be proud of what we do and for consumers to know that farmers are the best stewards of the land.

My message to you is to tell your story. Nobody can tell your story but you.

Wisconsin Farm Bureau will support you and what you do. As a board member, I believe the programs that WFBF staff have organized are some of the most comprehensive in the agricultural industry.

For example, the IGNITE Conference, which will be held on **March 27-28**, is a statewide information, training and fun-filled member engagement meeting. Held every other year, this conference strengthens county Farm Bureaus and county leaders by providing them with program ideas, resources and new skills to carry out the mission of their county Farm Bureau.

For future agricultural leaders, WFBF in partnership with Wisconsin Association of FFA hosted more than 180 high school juniors from around Wisconsin during our FFA Farm Forum. During the two-day, FFA members attended workshops on post-secondary opportunities focusing on learning more about farming and Wisconsin's agricultural community.

The benefits of attending these types of conferences is not measurable. Talking with others in the agriculture industry is one of the best ways to learn and talk through our challenges.

Know that Farm Bureau is improving the organization as well. Our staff listens to our members and is there to help. At the local, state or federal levels, the governmental relations team is striving to do their best.

When information needs to be shared with Farm Bureau members, the public relations team helps to keep you informed.

Stay tuned in for the new season of Farm Bureau ... helping and working for you.

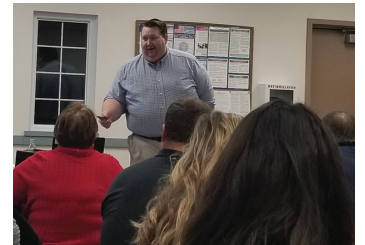
Policy Development and Pie



In January, WFBF Director of Local Affairs Steve Boe presented to District 6 members on Policy Development at their annual District Leaders Meeting.

Policy Development is the process by which Farm Bureau voting members craft, refine and propose new and updated policy through a series of steps starting at the county Farm Bureau level.

This session helped members learn the ins and outs of the most important part of our organization. They learned how you to get involved in drafting policy, how a policy makes it to the Monday meeting and what happens from there.



District Students Attend FFA Farm Forum

More than 180 high school juniors from across Wisconsin attended Wisconsin Farm Bureau's FFA Farm Forum in Wisconsin Rapids on February 21-22.

"It is incredible to see so many young people gathered together with a passion for agriculture and a desire to learn," said WFBF President Joe Bragger. "FFA Farm Forum is a great partnership between Wisconsin Farm Bureau and Wisconsin FFA. We know leadership development through FFA is second to none and we are excited to host this conference for our future agricultural leaders."

During the two-day event at Hotel Mead in Wisconsin Rapids, FFA members attended workshops on post-secondary opportunities focusing on learning more about farming and Wisconsin's agricultural community.

Joining WFBF President Bragger as keynote speakers at the event were Mid-West Farm Report broadcaster Reba McClone and Fond du Lac County Farm Bureau member Nate Zimdars.

The Wisconsin Farm Bureau Foundation sponsors FFA Farm Forum in cooperation with the Wisconsin Association of FFA.

This year's FFA Farm Forum marks the 48th time the event has been hosted for Wisconsin youth.

Visit county pages for photos of the students who were sponsored by county Farm Bureaus.



Promotion and Education Committee Representative Attends AFBF Annual Convention



Kathy Duescher
Promotion and Education
Committee Representative

The AFBF Annual Convention was held in Austin, Texas. WFBF and District 6, had good representation for YFA Discussion

Meet, Achievement Award, County Activities of Excellence, Promotion and Education and District 6 Farm Bureau members.

Have you considered attending the AFBF Annual Convention? We did and decided to take a road trip. The Wisconsin Farm Bureau members stayed at a hotel connected to the convention center making it easy to move about

comfortably during the convention.

We met people from across the country and shared stories of agriculture diversity and similarities. Whether waiting for President Donald Trump or U.S. Secretary of Agriculture Sonny Perdue to speak, a workshop session or stopping in the Trade Show to look at the County Activities of Excellence winners booths sharing our agriculture story is important.

Workshops were held on topics of business and rural development, consumer engagement, member engagement, public policy and advocacy and technology. AFBF Promotion and Education held two workshops and one presentation on stage in the Trade Show area. There was something for every interest.

The Trade Show had displays from our member benefit companies, American Farm

Bureau Foundation for Agriculture including the author of the book of the year, "Full of Beans: Henry Ford Grows a Car" and County Activities of Excellence Contest winners. Congratulations to Calumet County Farm Bureau.

Other activities offered were Texas ag tours to learn and see the area beyond the convention center and a concert by Jamey Johnson at Austin City Limits Moody Theater.

While most WFB members traveled by airplane to Austin, driving gave us the opportunity to use our member benefit discounts at Wyndham and Choice to save on hotels.

Seeing the country and telling our story about Wisconsin Farm Bureau and Wisconsin agriculture makes us Farm Bureau proud.

District 6 Bus Tour

Join us for a fun day in District 6 on **Friday, April 17**. Board the bus at 9 a.m. and let us do the driving to three fun-filled agricultural stops throughout the district.



First stop is to Cloveredge Farms in Manitowoc. Started in 1945 with six cows, Cloveredge Farm is a 500-cow dairy with eight GEA Monobox Robots. Owned by Joe, Bernard, Roger Jason Holschbach and Valerie Maigatter the farm uses free-stall housing and crops 1,100 acres of BMR corn silage, alfalfa, soybeans, shell corn, green beans and red beets. Robotic milking required construction of a new free-stall barn. The old free-stall barn now houses heifers and dry cows, while the new barn accommodates the milking herd. The eight robot boxes are located in the center of the barn that features a guided flow system. This meaning, cows must pass through an initial checkpoint before being granted access to the robot for milking. The gates in place scan the cows' collar. If it is time to be milked, the gate will allow her to pass into the holding area for the robot.



Second stop is to CNH Industrial in St. Nazianz. Through its people and brands, CNH Industrial delivers power, technology and innovation to farmers, builders and drivers around the world. Each of its brands, including Case IH, New Holland Agriculture, Case and New Holland Construction, FPT Industrial, Capital and Parts and Service, is a major international force in its specific sector.



Our final stop is at Ledge Rock Hemp in Greenleaf. 2018 was the first year that hemp was legal to cultivate in Wisconsin under the state pilot program. The current partners of Ledge Rock Hemp had grown their own crops and without much luck to find processors to help turn the work into usable products for consumers to manage their well-being, the group of growers turned to one another to find a solution.

After several meetings, consultations, trips across the country to tour facilities, laboratories and manufacturers, the partners developed a strategic plan to vertically integrate the separate grows into one extraction, processing and manufacturing facility. With this decision, Ledge Rock Hemp was born. We seed, grow, harvest, extract, formulate, test, bottle, seal, label high quality, affordable hemp extracts for you.

Lunch will be provided. Tour should return by 3:30 p.m. Seating is limited. Reserve your space today.

To reserve your seat by **April 10**, please contact District 6 Coordinator Becky Salm at 920.253.5303 or bsalm@wfbfcom.

YFA Members Attend Hockey Game

This year's YFA Gamblers outing was on February 7 and 82 YFA members had a blast at the game and enjoyed pizza after at the Green Bay Distillery.

Are you interested in more YFA events? Please contact District 6 YFA chairs, or any county YFA chair.

District YFA Chairs: John and Megan Lyons, 920.562.2004

Brown County: Samantha Van Duerzen, 920.362.3045

Calumet County: Gloria Kesler, 920.284.2991

Door County: Julie Zillmer, 501.594.0923

Kewaunee County: Mikayla Kuehl, 920.255.1807

Manitowoc County: Stephanie Nagel, M920.973.6547

Sheboygan County: Ryan Ernst, 920.207.4324

Sheboygan County: Joe Roberts: 414.248.0855



There was a great crowd for the Gamblers game on February 7



Members met after the game for pizza at the Green Bay Distillery.

WFBF Annual Meeting Celebrates 100 and Decides Policy



WFBF members and staff compiled historical items from the past 100 years of Farm Bureau that were on display at the WFBF Annual Meeting and YFA Conference.

In December, nearly 250 delegates at the 100th WFBF Annual Meeting in Wisconsin Dells established new policy directives for the organization.

Farm Bureau delegates adopted the policies that will be included in the organization's policy book in 2020. Resolutions were submitted by delegates as part of a grassroots policy development process.

Delegates held discussion on various dairy policy items. They supported the research and development of systems that provide increased dairy-industry stability and producer profitability.

Regarding energy, delegates supported requiring regular gasoline to contain 15 percent ethanol year-round.

Delegates discussed a variety of ag-tourism topics. They supported the opportunity for farmers to diversify and market agricultural experiences including agricultural event venues. Delegates supported allowing meat, fruit, vegetable and dairy farms to direct market their products to the end consumer without making the process too burdensome in state, county and local regulations.

Delegates from the Wisconsin Farm Bureau's 61 county Farm Bureaus also voted to support:

- Requiring disclosure of the Wisconsin Fence Law on real estate purchase agreements, so buyers are informed of the law.
- A cost-share program for farmers who experience wolf conflict.

On the federal level, delegates supported:

- FDA updating their standards of identity to recognize current technology in milk processing.

The federal resolutions were forwarded to the American Farm Bureau

Federation for consideration at its annual convention in January.

Farm Bureau also celebrated 100 years. The organization hosted a variety of events in honor of the occasion.

The main event was the centennial

banquet where more than 900 Farm Bureau members gathered. The event kicked-off with a reception featuring Farm Bureau-themed food stations including items like fruit and nuts as a nod to WFBF's former commodity sale program.

The evening session began with a video highlighting various interviews with Farm Bureau leaders. Following dinner, a live auction was held for three original centennial paintings done by Farm Bureau member and artist Betty Engel. The three paintings brought in \$2,750 for the Wisconsin Farm Bureau Foundation. Buyers included Sam and Julie Skemp, Dale and Denise Theel and Corey and Miranda Leis.

The program continued with two panels moderated by nationally known-journalist Max Armstrong. The first panel included key players in Wisconsin's legislative arena: Roger Cliff, Ben Brancel, Sheila Harsdorf and Howard Marklein. The second panel included three former WFBF Presidents and outgoing WFBF President Jim Holte.

The evening concluded with Interim Secretary of the Wisconsin Department of Agriculture, Trade and Consumer Protection Randy Romanski presenting WFBF President Jim Holte with a proclamation from Governor Tony Evers.

In addition to the special evening program, a full-room centennial exhibit was featured during the event where artifacts were displayed.



Food was complete with WFBF Centennial Desserts as part of 'Taste of Farm Bureau.'

Food and Supply Drive at the Annual Meeting

Wisconsin Farm Bureau Federation's Promotion and Education Committee hosted a food and supply drive during the WFBF Annual Meeting and YFA Conference. The items collected were donated to food banks across the state.

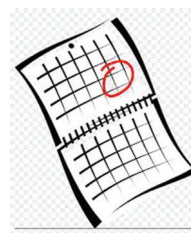
The committee collected more than 3,000 items. Some of the most popular donated items were diapers and wipes, peanut butter, toothbrushes and toothpaste and canned fruit and vegetables.

"It was so rewarding to see the committee organize this event and have Farm Bureau members from across the state come together to support families in need this holiday season," said WFBF's Director of Member Relations Mandy Masters.

The donated items were distributed through the following food banks and pantries Second Harvest Foodbank of Southern Wisconsin, Feed My People, Feeding America, Waushara County Commodity Food Pantry, Jackson County Food Pantry and New Horizons. Monetary donations also were collected to support the food and supply drive.



Mark Your Calendar...



Upcoming Events

March

13-16
27-28
31

AFBF YF&R Conference, Louisville, Kentucky
WFBF IGNITE Conference, Madison
County Early Bird Bonanza membership cut-off

April

1

Ag in the Classroom essays due to essay coordinators

17

District 6 Bus Tour

25

Calumet County Meet Your Farmer Event

May

7-8

Sheboygan County Classroom on the Farm

June

7

Brown County Breakfast on the Farm

14

Manitowoc County Breakfast on the Farm

Young Farmers and Agriculturists Attend YFA Conference

Discussion meet and Excellence in Ag and Achievement award featured young farmers from District 6. Stephanie Nagel from Manitowoc County and Tiffany Schneider from Calumet County competed in the Excellence in Agriculture competition. Lauren Kostello from Manitowoc County, Erin O'Toole and Rachel Harmann from Kewaunee County competed in the Discussion Meet and Josh Claussen from Brown County was a finalist in the Achievement Award. Congratulations to our District 6 competitors.

The Discussion Meet contest is a panel discussion in which Farm Bureau members between the ages of 18 and 35 are judged on their ability to express their ideas and opinions and reach a solution on current issues affecting agriculture.

Excellence in Ag award applicants are agriculturists who have not derived a majority of their income from a farm that they own for the past three years. Examples of occupations of past finalists include: Agricultural education instructor, fertilizer salesperson, veterinarian, farm employee, journalist and marketer. Each finalist must make a presentation and answer questions in front of a three-judge panel during WFBF's Annual Meeting and YFA Conference at the Kalahari Resorts in Wisconsin Dells.

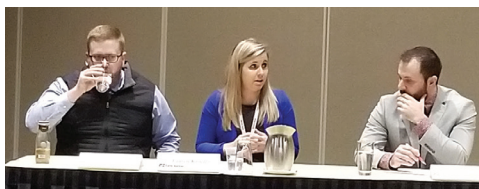


District 6 was well represented from six counties.

The Achievement Award recognizes YFA members who excel in farming, leadership ability and involvement in Farm Bureau and other organizations.

Achievement Award applicants must have derived a majority of income from on-farm production during the past three years.

Each finalist completed an application and a three-judge panel scored those applications and conducted an interview with the three finalists at the 2019 WFBF Annual Meeting and YFA Conference.



Lauren Kostello, Manitowoc County, competed in the Discussion Meet.



Stephanie Nagel of Manitowoc County and Tiffany Schneider of Calumet County competed in the final four in the Excellence in Agriculture competition.



Ag Day at the Capitol Brings Farmers to Madison

On February 4, more than 330 farmers and agriculturists gathered at Monona Terrace Community Convention Center in Madison for Ag Day at the Capitol. Ag Day at the Capitol is an annual event for Wisconsin farmers and agriculturists to learn about state issues affecting agriculture and meet with state legislators.

Attendees started the day by listening to issue briefings on wildlife damage claims, food labeling and a host of other bills including farmer commercial driver's license exemptions and farmland preservation tax credit.

Governor Tony Evers served as the event's keynote speaker. The Governor shared his focus on water quality in the state and why he declared 2019 the year of clean drinking water.

"Obviously it's going to take more than one year to deal with (clean water)," said Gov. Evers. "I have the utmost faith in the farm community. They are the original stewards of the land, after Native Americans, and there is no reason we can't work together to make clean water a priority."

He asked farmers and agriculturists to stay engaged and be part of the solution.

"We appreciate Governor Evers taking the time to attend Ag Day at the Capitol this year," said WFBF President Joe Bragger. "Our farmers

and agriculturists want to know that their rural communities are a priority."

Following the Governor's speech, the afternoon session was a panel on water quality. The panel was moderated by Dennis Frame, co-founder of Discovery Farms, and included Senators Howard Marklein and Patrick Testin and Representatives Todd Novak, Travis Tranel, Tony Kurtz and Katrina Shankland.

The panel discussed:

- Agriculture's role in developing solutions for cleaner water throughout Wisconsin.
- Ways in which water quality can be positively impacted without new regulations.
- How the legislature will support Wisconsin farmers and local communities to identify solutions for cleaner water.

The legislators featured on the panel were from the Speaker's Task Force on Water Quality and who represent the Central Sands and Southwest Wisconsin areas who are engaged in water legislation and talked in-depth about water issues facing rural Wisconsin. The afternoon's program wrapped up with

attendees hearing about water-specific bills and then walked to the Capitol to meet with their legislators from their respective areas. Most county Farm Bureau's sponsor attendance at Ag Day at the Capitol.

The following day was the Council of Presidents meeting where all six of District 6 county presidents or vice-presidents were in attendance. Presidents from the county Farm Bureau's met to learn and share information.



Governor Evers spoke at Ag Day at the Capitol.



Back row (from left): Door County president Dan Vandertie, Brown County vice president Ray Diederich, Manitowoc County president Brent Sinkula and Sheboygan County vice president Mark Ramel; front row (from left): Calumet County president Sean VanderHeiden, Brown County president Stan Kaczmarek and Manitowoc County vice president Levi Bratt.

Letter From the President



Stan Kaczmarek

Brown County Farm Bureau president

As write this article on beautiful winter day, one can only hope that spring is right around the corner and smell of freshly worked dirt fills the air as we prepare for another cropping season.

As Brown County president, I want to touch on area of concern that I see happening, it's called **volunteerism**. I see this trend heading in the wrong direction. It doesn't matter if it's Farm Bureau, snowmobile clubs, churches, civic organizations or volunteer fire departments and first responders. It seems that it's the same people volunteering all the time. I want to thank those who volunteer to help make Farm Bureau the organization that it is.

Secondly, I want to thank the Farm Bureau members and staff who take time to volunteer with local 4-H clubs, FFA chapters, county fairs and breakfast on the farm events. And finally, thank you to Farm Bureau members and staff who volunteer on local fire departments, as first responders and emergency medical technicians, your service to our communities is outstanding.

The question is, How do we attract more volunteers? My question to everyone is, "What can I do to make a difference in every organization that I belong to?" I ask Brown County members who have access to the internet to take a Google poll: <https://forms.gle/XsN1sNDBXaTvVjoRA>. We will have a prize for first person who responds and will draw names for gift certificates for members who respond. Thanks for your time in advance.

I want touch on few other things in the Brown County Farm Bureau world. In January, Kathy Duescher and I attended the AFBF Annual Convention in Austin, Texas. What a great way to meet other Farm Bureau members from this great country. We drove so we saw lots of rural America and big cities, too. I am no fan of traffic in the cities, but I did like the speed limits on the rural Texas highways.

In February, we sent several FFA students to FFA Farm Forum during the start of National FFA Week.

I testified before the Assembly Ag Committee in support of AB 790 to Increase County Conservation Dept spending support levels. This passed the Assembly on a 97-0, the Senate Bill SB 723 is hopefully going to be taken up before they adjourn in late March so please contact your state senator asking him or her to support SB 723.

And finally, when spring comes and we take to the roads with our farm equipment, remember the rules of road and sharing the highways and byways with our non-farming neighbors. Some of the things I see are slow moving vehicle signs that are faded and worn, and failure to have warning lamps activated during the day on equipment. It only takes a few seconds for an oncoming vehicle to be on you traveling 20 miles per hour when they are doing 55 miles per hour so that extra visual warning might save a life, plus it's the law.

Have a safe and wonderful spring and remember, volunteerism.

Farm Bureau Offers College Scholarship

The Brown County Farm Bureau will award one \$500 scholarship to a student pursuing an agriculture-related degree. Eligible applicants must be taking post high school agriculture related training or long- or short-course within the University of Wisconsin System or Wisconsin Technical College System. This includes the study of genetics, landscape, architecture, biochemistry, bacteriology, food industry, horticulture, environmental sciences, agriculture journalism and other agriculture-related fields of study. Candidates must be a Brown County resident or student at a Brown County School, and must be enrolled or planning to enter their first year of college at the time of application. Candidates need not be a Farm Bureau member.

To get a scholarship application, contact District 6 Coordinator Becky Salm at bsalm@wfbf.com or 866.355.7345, or visit the county web page. Applications are due on **April 1**.



Brown County Farm Bureau had great attendance at the WFBF Annual Meeting.



Brown County president Stan Kaczmarek met with his state representative at Ag Day at the Capitol.



Brown County Farm Bureau donated a basket of baby goods for the Wisconsin Farm Bureau Foundation Silent Auction.



Brown County vice-president Ray Diederich spoke on several issues during the delegate session at the WFBF Annual Meeting.

FFA Members Attend FFA Farm Forum



Denmark FFA members (from left): Jayden Kroll, Lashawna Vogel, Lexy Nowak and Kaleigh Werchek.



Bay Port FFA members (from left): Skyla Coogen, Griffin Gehrke, Leo Zalaznik and Sawyer Challe.
All students were sponsored by Brown County Farm Bureau.



Wrightstown FFA members (from left): Caralyn Vande Walle and Alexis Schmidt.

Calumet County

wfbf.com/about/counties/calumet
CalumetCountyFarmBureau

Farm Bureau Board Update



Sean VanderHeiden
Calumet County Farm Bureau president

In December, three delegates and other members attended the WFBF Annual Meeting at the Kalahari Resorts in Wisconsin Dells. The meeting is held in conjunction with the YFA Conference.

The weekend starts with the YFA Conference where we hold the Discussion Meet. The Discussion Meet is open for anyone to watch. There are seminars on new products coming to the Wisconsin markets. The delegates attended the District Caucus and the WFBF Policy Development Meeting. In these meetings, we discussed and voted on policy that we want to see lobbied for in our state and federal legislatures. These meetings are extremely important because it gives the delegates a chance to see what other members within our district are thinking and for us to converse over the issues.

In early February, I attended Council of Presidents and Ag day at the Capitol. We discussed topics affecting Farm Bureau members in Wisconsin. During Council of Presidents, we had a training on how to run our county Farm Bureau meetings more effectively with Roberts's Rules of Order. We also heard from our newly-elected WFBF President Joe Bragger. He spoke on his goals for Wisconsin Farm Bureau during his first year and his drive and enthusiasm will be a great addition.

We are always looking for new ideas and new people. If you or anyone you know want to attend our board meeting, please come, call or text me. The more ideas the better. Our meetings are open to members who want to come and participate.

On the note of always looking for more at our board meetings, we are always looking for new people to join Farm Bureau. If you know anyone who is interested in joining, please have them call me or have me stop and talk with them. We are a grassroots organization and our strength comes from our members.

If you have questions, please contact me. I am here to help you and I look forward to the next year with Farm Bureau.

Farm Bureau Offers Scholarship

The Calumet County Farm Bureau is pleased to provide a \$500 scholarship to a graduating high school senior who will be attending an accredited college, university or technical school.

The recipient will receive a check for \$500 following completion of his or her first semester. All majors will be considered, but preference will be given to students involved with agriculture.

The applicant must be from a current Calumet County Farm Bureau member family (parent, guardian or grandparent with a minimum of one-year active membership).

To get a scholarship application, please contact District 6 Coordinator Becky Salm at bsalm@wfbf.com or 866.355.7345.

Applications are due on **April 1**.



FFA Members Attend FFA Farm Forum



Chilton FFA members (from left): Julia Diedrich, Kathryn Koehler and McKayla Mertz.



Brillion FFA members (from left): Spencer Peotter, Meygan Schuh, Katrina Miller and Abigail Schuh.

Mark Your Calendars, 2020 Rural Open

Save the date for the 25th annual 2020 Rural Open on **Saturday, August 22**, from 10 a.m. to 5 p.m. at the Hickory Hills Golf Club in Chilton.

There is room for 40, four-person teams. Enjoy the bucket raffle and live auction.

You won't want to miss it.



County Farm Bureau Members Attend WFBF Annual Meeting



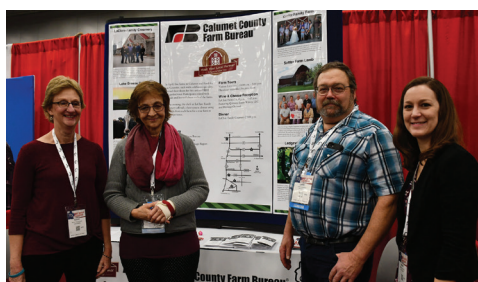
Wonderful attendance from Calumet County Farm Bureau at the WFBF Annual Meeting.



Rural Mutual Insurance sponsored Calumet County Farm Bureau member Tommy Kesler who participated in the 'Be the Babe' YFA contest on Friday night.



Calumet County Farm Bureau donated a 'Date Night on the Tractor' basket for the Wisconsin Farm Bureau Foundation Silent Auction at the WFBF Annual Meeting.



District Promotion and Education Chair Kathy Duescher and WFBF Director of Member Relations Mandy Masters were with Larry and Clara Hedrich from Calumet County by the display at AFBF Annual Convention for the County Activities of Excellence Award.



Three paintings from Calumet County Farm Bureau member Betty Engel were auctioned off at the WFBF centennial celebration to raise money for the WFBF Foundation.

Door County

wfbf.com/about/counties/door
DoorCountyFarmBureau

Scholarship Applications Available

The Door County Farm Bureau is now accepting applications for two \$500 scholarships.



Eligibility

- Applicants planning to pursue post-secondary education enrolling in any type of major/program with preference given to those students intending to enroll in an agriculture or agriculturally related field. Undergraduate degree at an accredited four-year college or university, associate degree at any Wisconsin technical college or UW-Madison Farm and Industry Short Course.
- Applicant or applicant's family must prove paid membership of the Door County Farm Bureau for at least one year prior to application.

For more information, or to get a copy of the application, please contact District 6 Coordinator Becky Salm at bsalm@wfbf.com or 866.355.7345.

Applications are due on **April 1**.

Welcome New Board Members

Welcome to our four new board members: Sam Mueller, Holly LaPlant and Eric and Rachel Harmann. We still have a couple board of director positions open, the board meets the third Tuesday of each month in Sturgeon Bay.

If you are interested in volunteering your time or talent to help benefit agriculture in Door County, please contact President Dan Vandertie at 920.493.7564.



Brooklen Cloutier from the Southern Door FFA Chapter attended FFA Farm Forum. Door County Farm Bureau sponsored the registration to attend.



Door County Farm Bureau donated a 'Taste of Door County' to the WFB Foundation Silent Auction at the WFBF Annual Meeting.

President's Message



Brent Sinkula

Manitowoc County Farm Bureau president

So, we sit here on the verge of spring. With it comes the plans for farm and family.

Whether it's planting decisions, or family events coming up this summer and fall, this is the time when many plans are made.

We make these plans hoping that things like weather, travel, etc., cooperate to have the plans succeed.

The same has been happening with the Farm Bureau board of directors. Plans are being made for Breakfast on the Farm, and soon the Farm Bureau food stand will need to be planned and organized.

In order for these events to be successful, not only does it take planning, but many volunteers working before, during and after the events to get everything accomplished.

Plus, like farming and family events, the biggest variable is always the weather. The best laid plans can go sideways quickly with bad weather.

Thank you to those who are working to get the Farm Bureau events ready. Let's hope for our farm's sake as well as Farm Bureau's, that 2020 isn't a continuation of the record setting wet weather we had the last two years.

Fingers crossed, and have a safe planting season.

Update From the County YFA Chair

By Stephanie Abts

With the majority of the cold weather behind us, we have spring to look ahead to. Let's hope that we have a drier spring than the one we left behind us most recently.

The Manitowoc County YFA group have been busy with a few events that we attended or hosted. We wrapped up our annual wreath sale in early December. We delivered close to 30 wreaths.

This is our main fundraiser for the year. Thank you to those who helped sell, buy or deliver wreaths. Your help and support are greatly appreciated.

We also had some fun and attended the WFBF Annual Meeting and YFA Conference in the Wisconsin Dells. As a county, we were well represented in the Policy Development Meeting and the annual meeting. Lauren Kostello competed in the Discussion Meet and did a great job.

I competed in the Excellence in Agriculture competition. It was a great experience and I highly recommend anyone looking to apply to do so.

The YFAs attended a Gamblers hockey game with many in attendance. After the game we enjoyed pizza at Green Bay Distillery.

Lastly, keep your calendar open for some fun. The YFA and Education and Promotion committees will be hosting a Spring Bus Tour. This is open to all members. In past years, I attended and enjoyed the day. It is a great way to tour and see many local attractions without traveling far.

For more details, please contact District 6 Coordinator Becky Salm or me.

As always, if you have any suggestions to help the YFA program or want to get involved, please contact me at 920.973.6547.

Promotion and Education Committee Update

By Rosalie Geiger and Cheryl Duchow, co-chairs

The Manitowoc County Farm Bureau Promotion and Education committee has started another active year.

This year, the committee has selected The Crossing of Manitowoc County as the organization that we will support with donations.

The Crossing Boutique has incentives for clients to participate in their 'Earn While You Learn' program. Earn While You Learn is an educational program with more than 200 class choices for male and female clients.

As they complete individual class sessions of about one hour, they earn credits, (mommy money/daddy dollars) to shop The Boutique.



Manitowoc County Promotion and Education Committee donated to The Crossing. The Crossing provides services that strengthen families throughout Manitowoc County.

Currently, they have about 200 visits per month. This creates an annual expense of more than \$30,000. They look to community members to help provide the material needs of clients and their families.

This program of benefits through education fosters responsibility, self-worth and independence.

Items needed include: Diapers, baby, wipes baby shampoo and lotion, toilet paper, napkins, Kleenex, soaps, detergents, body wash, lotions, shampoo and personal care items.

This spring, we hope Farm Bureau members and their children will participate in our coloring contest, essay contest, scholarship contest and help us select a new Miss Farm Bureau.

National Ag Day is **March 24**, please spread the good news about agriculture, and that if you like to eat, we all need farmers and ranchers.

The theme this year is, 'Food brings everyone to the table.' Join farmers, teachers, FFA and 4-H members, college students and other agricultural enthusiasts by reading books about agriculture on National Ag Day.

We have a great group of Farm Bureau members on our committee, if you want to join us, please contact District 6 Coordinator Becky Salm at bsalm@wfbf.com or 866.355.7345.



Wisconsin Farm Bureau
**Promotion
and Education**
Program

County Farm Bureau Members Attend WFBF Annual Meeting



Promotion and Education co-chairs Rosalie Geiger and Cheryl Duchow posed at their booth for the Centennial Activities of Excellence Award.



Manitowoc County Farm Bureau donated several items to the Silent Auction for the Wisconsin Farm Bureau Foundation.



Manitowoc County Farm Bureau president Brent Sinkula addressed the delegates at the WFBF Annual Meeting.



Members attended Ag Day at the Capitol and met with Senator Devin LeMahieu and Representative Tyler Vorpapel.



Manitowoc County Farm Bureau was represented at the WFBF Annual Meeting.



District 6 Coordinator Becky Salm, Rosalie Geiger and past WFBF President Jim Holte posed after Rosalie was presented with a membership prize on behalf of her husband Randy Geiger for his membership work.

Member Tom Freis Testifies

In early January, Representative Paul Tittel testified with Senator Jerry Petrowski (Marathon) before the Senate Committee on Transportation, Veterans and Military Affairs in support of his lemon law bill for implements of husbandry.

Under this bill, if a farmer has a repeating defect with their implement of husbandry, they can send it back to the manufacturer for it to be fixed.

If it can't be fixed, the manufacturer can send them a check for a full refund.

Tom Freis also testified in front of the committee.



Representative Paul Tittel and Manitowoc County Farm Bureau member Tom Freis posed after testifying in the Senate Committee.

Breakfast on the Farm, June 14

Join us for Manitowoc County Breakfast on the Farm from 8 a.m. to 12 noon on **Sunday, June 14**, at Soaring Eagle Dairy in Newton.

We are always looking for volunteers to help with parking, cooking eggs, food serving and children's games. Shifts are from 7:30 to 9 a.m. and 9 to 12:30 p.m. If you can help, please contact Sherrie Pinkerton at 920.973.4944.

FFA Members Attend FFA Farm Forum



Reedsville FFA members (from left): Ryah Brandt and Olivia Pautz.



Kiel FFA members (from left): Chelsea Braun, Andie Meyer, Lauren Madden and Briana Riesterer.

The students were sponsored by the Manitowoc County Farm Bureau.

Promotion and Education Committee to Hold Coloring Contest

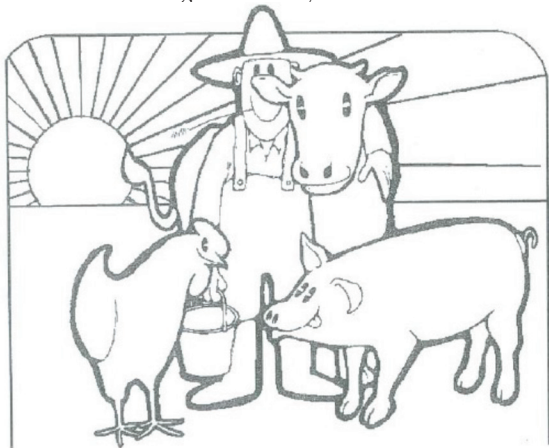
The Manitowoc County Farm Bureau Promotion and Education Committee are again this year sponsoring a coloring contest for kindergarten through third grades.

There are two separate pictures: K-1st: Girl and Calf and 2nd-3rd: Farmer and Animals

The rules are as follows:

- Crayons ONLY may be used.
- All requested information must be on the back of the picture – full name, age, address (with city and zip code), phone number, name of school attending, grade and name of teacher.
- Each grade will have first, second and third place winners with monetary prizes being awarded.
- Coloring contest pictures become the property of Manitowoc County Farm Bureau.

Please Note: Pictures are to be colored as is – NO add-ons, i.e., people, flowers, trees, birds, sun, clouds, spots on cows/unless that is how the picture is, no additions to clothing or anything else to the pic. This is a coloring contest only.

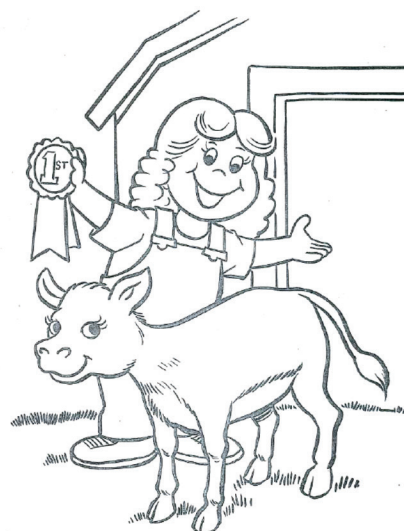


This contest is open to students in a Manitowoc County school. If your school does not plan to use this as a class project, students may enter on an individual basis.

If you have any questions, please contact Cheryl Duchow at 920.901.3745. To get a copy of the pictures, please visit wfbf.com/about/counties/manitowoc.

Contest entries are to be mailed to: Manitowoc County Farm Bureau, c/o Cheryl Duchow, 415 N. Adams Street, Valders, WI 54245.

Entries must be received by **May 1**, not postmarked on the due date.



To get a full-size coloring pages, visit the Manitowoc County Farm Bureau web page and download it.

Farm Bureau to Offer Two Scholarships

The Manitowoc County Farm Bureau Young Farmer and Agriculturists (YFA) and the Promotion and Education Committees are each offering a \$500 scholarship to a student who is attending an accredited college, university or technical school.

The recipients will each receive a check for \$500 following completion of his or her first semester with the check made out to the school and student's names.

All majors will be considered, but preference will be given to students involved with agriculture.

The applicant must be from a current Manitowoc County Farm Bureau member family (parents, guardians or if the applicant is older than 21, he or she must have his or her own membership.)

Associate members through Rural Mutual Insurance customers also are eligible.

To get a scholarship application, contact District 6 Coordinator Becky Salm at bsalm@wfbf.com, 866.355.7345 or visit the county web page.

Applications are due on **April 1**.



Accepting Applications For Miss Farm Bureau

Who is Miss Farm Bureau? Miss Farm Bureau is a young woman from Manitowoc County who represents Farm Bureau around the county. Applicants must be between the ages of 16 and 24 as of January 1.

What does Miss Farm Bureau do during her reign? Miss Farm Bureau is crowned in June during Breakfast on the Farm. Most of her appearances take place during summer. Appearances include area parades, County Fair, farmers' markets and local community events throughout the county.

How do I become Miss Farm Bureau? Compete and submit the application form by **April 15**. Send the application to Manitowoc County Farm Bureau Promotion and Education committee, c/o Anne Hutterer, 7829 West Hillcrest Road, Manitowoc, WI 54220.

For questions, please contact Ann Hutterer at 920.973.8565 or for an application, visit wfbf.com/about/counties/manitowoc.



Miss Farm Bureau 2019-2020 Allison Leschke, photo compliments of Shellie Kappelman Photography.

Sheboygan County Teacher Wins Award

Cindy Barber, a fifth-sixth grade teacher at Random Lake Middle School in Random Lake, is this year's recipient of Wisconsin Farm Bureau's Ag in the Classroom program's Outstanding Teacher Award.

Each year the Wisconsin Farm Bureau Foundation recognizes a teacher for his or her efforts in educating students on the importance of agriculture. Teachers of all grade levels and subject areas, with the exclusion of certified agricultural education instructors, are eligible to apply.

"Cindy has been offering her students a wide-range of learning opportunities using programs and resources available on the local, state and national levels," said Darlene Arneson, Wisconsin Farm Bureau's Ag in the Classroom Coordinator.

Last fall, Barber's students presented a farmers' market for their school. They obtained donations of pumpkins, apples, string cheese and other products. The students also worked with the shop department to build pumpkin and ghost cut-outs.

Barber earned a bachelor's degree in education from UW-Milwaukee. Prior to that she took pre-education classes from UW-Washington Center and earned an associate degree in culinary studies from Milwaukee Area Technical College. Barber taught at Lumen Christi School from 1993 to 2000, as a substitute teacher in Random Lake from 2006 to 2010 and full-time at Random Lake since 2010.

Barber will be Wisconsin's nominee for the National Excellence in Teaching Agriculture Award and will receive a \$500 sponsorship to attend the 2020 National Ag in the Classroom Conference.

Melissa Liegel, a fourth-grade teacher at Tower Rock Elementary School in the Sauk Prairie School District, and Kathleen Schumacher, a K-fourth-grade teacher at Stetsonville Elementary School in the Medford School District, were named runners up for their efforts in sharing agricultural literacy with their students.



Farm Bureau Offers Scholarships

The Sheboygan County Farm Bureau is pleased to provide a \$1,000 Board of Directors scholarship to a graduating high school senior who will attend an accredited college, university or technical school. All majors will be considered, but preference will be given to a student involved with agriculture.

The Sheboygan County Farm Bureau women's committee also offers up to two, \$500 scholarships. Applicants for either scholarships must be from a current Sheboygan County Farm Bureau member family (parents, guardians or grandparents).

To obtain a scholarship application, please contact District 6 Coordinator Becky Salm at bsalm@wfbf.com or 866.355.7345. Applications are due on **March 15**.

Women's Committee Update

By Marcia Fenner

The women's committee is working on Classroom on the Farm. Dates are **May 7-8**. It will be held at Majestic Crossing Farm. There will be 900 students attending from 15 different schools. New this year will be the Spud Mobile from Antigo telling the students the story of potatoes and a Maple Syrup station as well as the usual other seven stations. Liz Gartman and her students from LTC will be assisting as tour guides.

Liz Gartman is working on the essay contest for fourth- and fifth-grade students. This year, the topic is, 'How has Wisconsin agriculture affected your life today?' Entry deadline is **April 1**. Essays must be handwritten in ink or be computer generated and between 100- to 300-words.

New this year is Food Brings Everyone to the Table Contest. Draw a picture and color a picture that shows people who are involved in growing, producing, processing, selling, preparing or other connection to how food gets to our tables. Entries are due **March 31**. Age categories include: Ages 6 and younger, ages 7-9 and ages 10-12.

Mail entries to Wisconsin Ag in the Classroom, Attn.: Darlene Arneson, P.O. Box 5550, Madison, WI 53705.



Sheboygan had good representation at the WFBF Annual Meeting in December.



The four Sheboygan Farm Bureau delegates talked during the Delegate Session.



Sheboygan County Farm Bureau vice-president talked to a group of representatives in a meeting at the Capitol on Ag Day.



President Lloyd DeRuyter spoke during the Delegate Session at the WFBF Annual Meeting in December.



County Farm Bureaus
PO Box 5550 Madison, WI 53705

Address Service Requested

Non Profit
Organization
US Postage

PAID

Platteville, WI 53818
Permit No. 124

**This Issue Contains
Highlights for:**

Brown County

Calumet County

Door County

Manitowoc County

Sheboygan County

Rewarding Wisconsin Farmers



Our financial success allows us to reward our farm policyholders for their loyalty to Rural Mutual and commitment to Wisconsin agriculture.

To learn how to qualify for up to 5% back, contact your local agent or visit RuralMutual.com/farmdividend

Rural Mutual
Insurance Company