



Grassroots

District 4 News

“If You Are Going Through Hell, Just Keep Going”



Joe Bragger

District 4 Director

“If you’re going through hell just keep on going.”
– Winston Churchill

Or as we hear it in the country song, “If you’re going through hell, keep on going. Don’t slow down. If you’re scared, don’t show it. You might get out before the devil even knows you’re there.”

We’ve been reading the agricultural pundit’s bleak forecasts for the upcoming year, following yet another challenging period for dairy farmers. Crop growers are grappling with steep input costs across the board, falling short of profitable projections. Meanwhile, politicians vying for election are rolling out agriculture bills to showcase their support, even though they’re aware of the bills’ slim chances of passing. There’s talk of a new Federal Milk Marketing Order reform, but will it truly benefit processors or farmers? The shift from “the higher of” to “the average of” in the last dairy policy change has already cost farmers over a billion dollars during the last farm bill’s lifespan. Excuse me for not being optimistic about the latest banter. I recently heard a farmer expressing that it is ironic that while a single farmer feeds about 127 people many farmers are existing on food stamps and Badger Care. Relating to the current farmer mental health crisis he stated that “we need an overhaul to how farmers are compensated for their contributions and that solving the economic burdens would do much with mental health.”

This takes me back to my opening, in the movie “The Darkest Hour”, newly elected Prime Minister of England Winston Churchill is struggling with what to do with the impending attack on England by German forces. Many of his advisors and the social elites were advocating for a truce or surrender to Germany in fear that they would lose their possessions including businesses, homes and estates in a battle for Britain. They felt capitulation or an early truce would preserve them. In the culminating scene of the movie, Winston evades his advisors, leaves his car, disappears into the subway and hops on

a train with ordinary citizens of London. As the other passengers recognize him, they start to kneel and bow, and he asks them to refrain from doing so. He looks to a man and asks him his occupation and the man says, “I’m a bricklayer, Sir.” Churchill wryly responds, “Great occupation, I’m afraid we will need people like you.” Now, Churchill proceeds to tell the people on the subway that a war with Germany would rain hell down on London and that there would be a catastrophic loss of life and property. Everyone in the subway stood to tell him they were with them to the end and that they should never surrender.

Winston Churchill, inspired by his citizens, went on to parliament and delivered his epic speech. “Even though large tracts of Europe and many old and famous states have fallen or may fall into the grip of the Gestapo and all the odious apparatus of Nazi rule, we shall not fall or fail. We shall go on to the end, we shall fight in France, we shall fight on the seas and oceans, we will fight with growing confidence and growing strength in the air, we shall defend our island, whatever the cost may be, we shall fight on the beaches, we shall fight on the landing grounds, we shall fight in the fields and in the streets, we shall fight in the hills; we shall never surrender.....”

In the Capitol building in Washington, D.C., there is a small hallway that has two paintings opposite each other on the ceiling. One shows farmers planting and harvesting, the other shows people painting, scientists and other non-agrarian activities. The significance of this hallway is that only once farmers started to feed people and each person didn’t have to spend their time foraging or hunting for food, did science, art and other human activities become possible. I thank each of you for your contributions and support of each other and agriculture as we continue to fight for what farmers need. As an organization, we are as unstoppable as the Allies in the war when we show up united in cause and willing to make all the difference, in our communities, on our local town boards, county boards, state capitals and in Washington, D.C. Together, amplifying our voices through Farm Bureau.

See you on the other side, as always enough is too much!

Joe Bragger



Save even more with **TWO** new

MONEY-SAVING
member benefits!



Learn more about your Farm Bureau member benefit savings by scanning the QR code or visiting wfbf.com/membership/member-benefits.

WFBF member benefits may be changed or discontinued at any time without notice.

Wisconsin Farm Bureau Travels to the World Ag Expo in California



Kevin Whalen

District 4 Coordinator

I wanted to share some of the experiences that I enjoyed during my most recent Farm Bureau travel. The “Wisconsin to World Ag Expo in California” trip was one of the most fulfilling vacations that I have had a chance to enjoy. My wife, Marilyn, and I had the opportunity to experience everything from meetings at the Farm Bureau headquarters, touring

orange groves and vineyards, exploring San Francisco Bay and everything in between.

We arrived in San Francisco after a four-hour flight that included neat views of the Sierra Nevada mountains and San Francisco Bay. Our guide, Jason, met us at the baggage handling area and he escorted us to our coach bus.

The bus took us directly to our hotel, Holiday Inn and Suites – Fisherman’s Wharf, where we unloaded luggage and prepared to check out the docks. We had supper at Bistro Boudin, which is home to the original San Francisco Sourdough. We checked out the wharf and returned to our hotel.

An early morning departure allowed us to see the famous prison on Alcatraz Island. Alcatraz prison was one of the creepiest and most confining experiences I have ever had. The tour was extensive, and we were able to experience solitary confinement along with a full-detail audio clip. Two hours flew by, and we were ready to depart. On our way out, we checked out the souvenir shop where we picked up a deck of playing cards with the rules of the institution.

We continued sightseeing in San Francisco with Jason giving us information on all that we viewed. We visited the site of the 1915 World Fair. The Palace of Fine Arts was temporarily built for a fair, but everyone enjoyed it so much that they rebuilt it as a permanent park. From the park, we traveled to Sausalito for lunch at Napa Valley Wine. Each couple headed back to Fisherman’s Wharf where we toured and selected a restaurant on our own. Marilyn and I chose Christian’s Seafood on the dock. The crab was delicious, but I could have eaten two more.

Day three started with packing up our stuff and heading down the central valley to Bear Creek Winery and Vineyard. This was one of the largest vineyards in California with a capacity to ferment 19 different varieties. For taste testing, I selected the cabernet sauvignon which was a full-flavored red. The next stop was at Travaille & Phippen’s Almonds where we were able to view full processing of the crop from shelling to packaging. A highlight was to view the robots that kept up a steady pace in processing. Our tour included a stop in an almond blooming orchard along with a drive-by of an orchard that was being reclaimed after thirty years of production. All wood was sustainably harvested. The area will be planted with crops other than almonds to fallow the soil. We stopped at In and Out Burger to try a local favorite. It had fast service with traditional burger fare. We then headed to Tachi Casino Resort. It was a nice place to unwind. We played some slots as they gave us \$30 to spend. It lasted for two days!

Woke up the next morning to a good breakfast at Coyote Grill which was the casino breakfast specialist. It had excellent food and we had a \$60 voucher with the trip. Our group left at 8:00 a.m. for the World Agriculture Exposition. The event was held at the International Agri-Center in Tulare. There were over a thousand exhibitors ranging from self-driving auto steer and remotes to steam-cured hay bales. We met with representatives from California Farm Bureau and thanked them for arranging our wonderful tours. Brad Uken represented our group and shared the hospitality of the Dairy State with the Golden State. Shannon Douglas, California Farm Bureau President, gave a great welcome and summary of the Farm Bureau activities.

Our favorite stop was at the Women’s building where you could sit and have an adult beverage. The facility had all kinds of demonstrations of crafts and skills that were very interesting. This was the first farm show I have attended that served champagne. Next, I was able to watch the reining

competition demonstration with two top-quality quarter horses. After the full day, we headed back to the resort for socializing and rest. The exposition was a lot of walking, and we earned some shut-eye.

The second day at the Expo was totally different than the first. It was Valentine’s Day, so Marilyn stayed at the resort to check out the spa and relax. I walked with Derek Trescher and J. Wells and saw the whole show differently. We hit all the machinery booths including Eaton which is where my son-in-law works. The booth workers didn’t know him since Eaton is multinational. Our last stop was the dairy barn and some of our group earned complimentary passes to the social. That activity sure wore us out! They will remember the crew from Wisconsin.

Our final evening at Tachi Palace included giving back all the money the resort had given me and a last look at all the restaurants and social gathering places that the resort offered. The spa was closed, and I didn’t find the pool. It was time for some sleep.

We woke early and loaded out on our drive to Los Angeles. Our dairy farm tour was the first stop. Our group visited Hilarides Dairy, an operation that milked 10,000 Jersey cows in a rotary milking parlor. It was very impressive in size, vision and enthusiasm for the industry. The operation was very similar to large dairies in Wisconsin. Just like back home, there were kids enjoying the tour with us and helping out their parents. A specialty of the operation was concentrating the milk and reusing excess water in the operation. Water is a very important resource in California. Hilarides was lucky enough not to have evidence of water restrictions.

The last farm stop was at Tree Source Citrus Nursery. They produce seedlings for marketing in the orange industry. They also have commercial orchards that we were allowed to walk through and harvest our own oranges. Our guide introduced us to Sumou oranges which were easily the best oranges I have ever tasted. The landscape surrounding the operation was breathtaking. This place was the highlight of the agriculture part of our trip.

We continued traveling to Los Angeles. I did not think it was so close to the mountains. Our travel into the valley that L.A. is in was intense. The ten lanes of traffic are very intimidating. I was glad our driver could handle the pressure. We arrived at the Hilton Garden Inn – Hollywood a little later than scheduled. My room was right next to the pool, but it was an outdoor type. It was a little chilly for an evening swim.

Paramount Studio was first on the agenda for Friday’s activities. We toured all the studio lots in golf carts just like you see on television. The tour guides were enthusiastic along with being very knowledgeable. Each lot had posted the famous shows that were recorded on each particular lot. Filming was going on, and they told us how to figure out which actors were participating by the Ziploc bags that they carried. We were told not to interrupt and our crowd was very well-behaved. We did see handprints of some well-known actors that streaked through the lot (Ted Danson and Woody Harrelson on the final day of taping of Cheers).

The last big touring event was the L.A. strip. We went downtown and enjoyed lunch at the City Markets which are authentic Los Angeles hotspots. We ate at a delicatessen that served a great pastrami sandwich to solve the afternoon hunger. We were able to ride the Angel Flight which was a short rail that took riders to the viewing area above the strip. Our group viewed the skyline before touring Beverly Hills and Rodeo Drive. We didn’t see the Clampetts but did go into Tiffany’s just to get that Hollywood feeling. The Beverly Wiltshire hotel was impressive. It looked just like it did in “Pretty Woman”. Our final evening meal was at Tam O’Shatner which was Walt Disney’s favorite restaurant. It is a Scottish-themed pub with a rich atmosphere. It was very exquisite with a nice selection of cheese and ribeye.

Departure required a box breakfast so we could make our return flight to Chicago. Way more food than we needed at 4:30 am. We slept on the way to the airport and said our goodbyes to the Golden State! We arrived without difficulty at O’Hare. I finished the book I was reading as we taxied to the gate. We loaded up and headed back to the Farm Bureau headquarters in Madison. It was the best vacation I have ever had packed into 8 days!

District 4 News

Picture This! Wisconsin Farm Bureau Travels



The boat ride to the infamous Alcatraz prison.



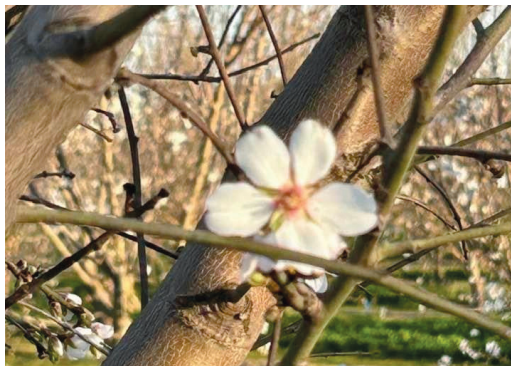
Wisconsin Farm Bureau members gather for a group photo in front of the Golden Gate Bridge.



Beautiful Sausalito, California scenery.



Dormant vines at the Bear Creek Winery and Vineyard.



An almond blossom in bloom.



A pile of almond hulls ready for processing.



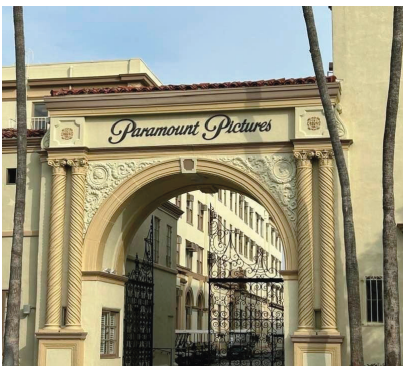
California Farm Bureau President Shannon Douglas with WFBF's CAO Bradley Uken at the World Dairy Expo.



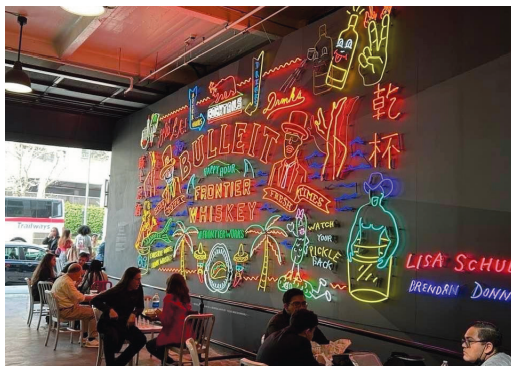
An orange tree ready to be harvested at the Tree Source Citrus Nursery.



The rotary parlor used at Hilarides Dairy where they milk 10,000 Jersey cows.



The Paramount Pictures entrance gate.



A sign at the Los Angeles market.



The entrance to Beverly Hills.

District 4 News

District 4 Porch Pot Workshop



What a fun time with this great group of ladies! A special thank you to Amber at Hale Picking for hosting us!

District 4 Excels at the WFBF Annual Meeting



Our District 4 crew at the WFBF Annual Meeting.

District 4 had an outstanding Annual Meeting with two members getting elected to the state Board of Directors (Joe Bragger, Wisconsin Farm Bureau Federation Vice President and Brenda Dowiasch, Promotion and Education Chair).

DISTRICT 4 POLICY DEVELOPMENT MEETING & DISCUSSION MEET CONTEST

Pull up your seat at the table! District 4 Policy Development Meeting and Discussion Meet Contest as we draft resolutions to be considered for 2024 Farm Bureau policy. All Farm Bureau members are encouraged to consider attending!

Thursday, August 15, 2023

AGENDA:

6pm - Discussion Meet Contest
7:00pm Light Refreshments
7:30pm - Policy Development Meeting

WAUMANDEE COUNTRY BAR

S2020 County U,
Waumandee, WI 54622



AG NEWswire, POLICY PULSE, STEWARDS AND MORE!

VIEW ALL THE WAYS YOU CAN STAY UP TO DATE ON WISCONSIN FARM BUREAU NEWS AT WFBF.COM.



District 4 News

Artisanal Butter Making Workshop

This butter making workshop took place in Elk Mound. Thank you to District 4 and District 9 Young Farmer and Agriculturist committees to organizing and sponsoring!



Members learning how to cure butter.



Haily Sands demonstrating artisanal butter making.



YFA group forms the butter with their hands.



Members choose how to season their butter.

More Than 315 Attend Farm Bureau's FFA Farm Forum

More than 315 high school juniors and FFA advisors from across Wisconsin attended Wisconsin Farm Bureau's FFA Farm Forum in Rothschild on Feb. 15.

"FFA Farm Forum is an opportunity for the next generation in agriculture to gain new experiences and leadership skills," said WFBF President Brad Olson. "We appreciate FFA members participating in FFA Farm Forum, investing in both themselves and the future of agriculture."

The keynote speaker was UW-River Falls Collegiate Farm Bureau member Katrina Hoesley. Hoesley encouraged students to live out their best values with intention and to connect their passions with a driving purpose to ensure success.

During the one-day event, FFA members attended career-based workshops including: 'Explore the World of Marketing and Communications' with Kendall Riskedal of broadhead. and Country Lights Soy Candles; 'Navigating Ag Horizons: My Journey from FFA to Farm Bureau' with Ben Sand of 715 Risk Advisors LLC; 'Redefining

and Celebrating Sustainability' with Rachel LaCount of Wisconsin Farm Bureau Federation; 'Ag Lending: More Than Just Loaning Money' with Josh Schmidt of AgCountry Farm Credit Services; 'FFA, YFA and Your

Ag Experience' with Katrina Hoesley of UW-River Falls Collegiate Farm Bureau; and 'Your Passion + The Right Training = Career Success' with Adam Wehling of Chippewa Valley Technical College.

"FFA Farm Forum is a great partnership between Wisconsin Farm Bureau and Wisconsin FFA to encourage leadership development and exploration of careers in agriculture,"

said WFBF Director of Young Leader Programs Melissa Jacobson. "We were excited to provide this opportunity for future agricultural leaders."

The Wisconsin Farm Bureau Foundation sponsors FFA Farm Forum in cooperation with the Wisconsin Association of FFA. The Wisconsin Farm Bureau Foundation was established in 1988 to provide support for agricultural education and leadership programs. Through donations and other contributions, the Wisconsin Farm Bureau Foundation invests time and resources to support the next generation of agriculturists.



WISCONSIN FARM BUREAU 35 UNDER 35

NOMINATIONS OPEN MARCH 1-JUNE 1

35 Under 35 recognizes and celebrates young farmers and agriculturists who are preserving agriculture through leadership in sustainability. 35 Under 35 is open to WFBF YFA members ages 18-35. 35 finalists will be selected to receive special prizes and \$100 cash. Top individuals in each category will receive \$500 cash.

LEARN MORE AND NOMINATE A YFA MEMBER AT <https://bit.ly/WFBF35Under35>



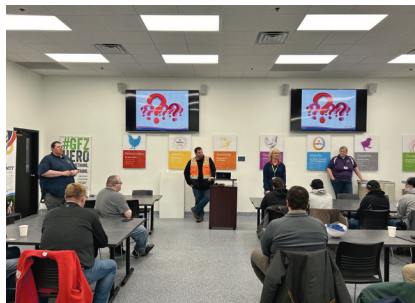
Buffalo County YFA Tours Pilgrim's Pride Plant

On April 3, 24 members, guests and prospective members of Buffalo County Farm Bureau's Young Farmers and Agriculturists participated in an educational tour of the Arcadia Poultry Processing plant. The facility, which processes over one million birds per week, allowed members to see all phases of plant operation from the live haul to cooling and storage. The tour, which was organized by YFA chairman Collin Weltzien, included some contract growers, possible growers and people with a genuine interest in food production in the Buffalo County area.

Pilgrim's Pride staff completed the tour with a very informative presentation on the background of Pilgrim's Pride as well as the historic evolution of the plant which started in a building that was originally a

brewery in the early 20th century. Forecasted changes for the future were given along with how challenges are being met by the plant including disease, labor and innovative competition.

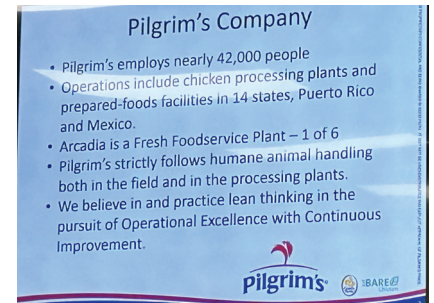
Notes of interest from the tour included that all Kwik Trip chicken is processed at the Arcadia plant, it has the highest employee retention in the company and one of its biggest challenges is space being limited by where it sits next to Barnes Bluff. On a personal note, we want to congratulate Josh Axness, plant manager, on his twentieth year of employment which occurred on the day we toured the plant. A big thank you to Pilgrim's Pride for making the tour possible!



The Pilgrim's Pride speakers were very informative.



Members enjoyed a delicious lunch in addition to the tour!



Pilgrim's Pride company background and values.

Buffalo County Farm Bureau Sponsors "Changing Hands Workshop"

A large crowd of members attended the Changing Hands Luncheon on December 12 at the Arcadia Country Club. This workshop included information on tax implications and insurance needs of a farm in ownership transition. Buffalo County Farm Bureau board of directors Emily Kaltenberg and Jan Schaffner developed the activity to help farmers looking to change ownership of their operations. One of the goals of Farm Bureau is to provide educational benefits to our members. Organizers stated the feedback from this event was great!

Here are some of what people had to say:

- "So much information and knowledgeable people. I would encourage anyone to go."
- "I have more questions now than I had coming in and I think that's good. I'm learning and want to plan successfully."

Thank you to the presenters:

Jan Schaffner - Schaffner Tax Solutions

Jim Stodola - Farm Bureau Financial Services/Rural Mutual



Jan Schnaffer of Schaffner Tax Solutions explains the tax puzzle.



Jim Stodola of Farm Bureau Financial Services and Rural Mutual Insurance Company explains tax needs.

Buffalo County

wfbf.com/about/counties/buffalo
BuffaloCountyFarmBureau

Buffalo County Sponsors FFA Members to Attend Farm Bureau's FFA Farm Forum

For over 20 years, Buffalo County Farm Bureau has sponsored two delegates from each FFA chapter in the county. They have sponsored members who have become teachers, lawyers and distinguished leaders in in Buffalo County.



Alma FFA – From left: Silas, Spencer, and Bo



Arcadia FFA – From left: Landan Bremer, Savannah Krista, Tessah, and Caleb Pronschinske



Mondovi FFA – From left: Allison George, Shaelyn Brantner, Ella Tayler and Emma Pronschinske

Eau Claire County

wfbf.com/about/counties/eauc Claire
EauClaireCountyFarmBureau

Eau Claire County Farm Bureau Delegation Attends WFBF Annual Meeting



Eau Claire County Farm Bureau was well represented at the WFBF Annual Meeting.

Eau Claire County Farm Bureau Recognizes Outstanding Ag Leadership Youth



Each Year the Eau Claire County Farm Bureau recognizes two 4-H youth from our county who show outstanding involvement and leadership in agriculture. This year's recipients are Brian and Elizabeth Zimmerman. They received their rewards at the County 4-H Banquet in December. Both Brian and Elizabeth are long-time members of the Russel Corner Badgers 4-H club and the Osseo-Fairchild FFA. Congratulations to both members and keep up the good work!

Thirteen Counties Co-Sponsor Booth at Eau Claire Farm Show

Thirteen counties co-sponsored a Farm Bureau membership booth at the Chippewa Valley Exposition Center on March 5 and 6. Thousands of people came out to one of the longest-running farm shows in the state of Wisconsin. The 60th Eau Claire Farm Show featured the latest innovations in farm and dairy equipment. The show was a chance for producers to see the equipment and supplies closeup. It provides a networking opportunity for farmers and farm families.

Eau Claire Farm Bureau President Brenda Dowiasch from and Buffalo County Farm Bureau Ed Rippley greeted attendees and told them about Farm Bureau. A new addition for this year was the distribution of canning supplies that were donated by Farm & Fleet. Booth workers distributed 119 boxes of canning lids which is equal to over 161,000 lids. The booth also allowed us to promote upcoming activities and hand out scholarship applications. Many current members from five different districts of Farm Bureau stopped by to share ideas and conversation.



On Tuesday afternoon, the annual 'Aggie Award' was presented to Mark Hagedorn, who was vice chairman for the Wisconsin Farm Technology days that were hosted by Eau Claire County. The award honors those who have made significant contributions to agriculture in West Central Wisconsin.

The sponsoring counties included: Barron, Buffalo, Chippewa, Dunn, Eau Claire, Jackson, Polk, Rusk, Sawyer, St. Croix and Trempealeau.



1. Ed using media training skills learned from the WFBF Leadership Institute for an interview.
2. WFBF members and staff welcomed visitors and promoted WFBF to visitors at the Eau Claire Farm Show.

Northwestern Wisconsin Farm Bureaus Sponsors Farm Show Reception and Sustainability Workshop

Thirteen western Wisconsin Farm Bureaus sponsored a reception for individuals who attended the Eau Claire Farm Show at the Chippewa Valley Technical College. After sampling entrees, Brenda Dowiasch welcomed attendees and exhibitors to a program on sustainability. Wisconsin Farm Bureau President Brad Olson introduced himself and

explained his vision for the Wisconsin Farm Bureau activities. Rachel LaCount gave her presentation to an interested crowd. She explained many important characteristics of sustainability and ways businesses could protect our environment while remaining profitable.



Eau Claire Farm Bureau President Brenda Dowiasch welcomes people to the Farm Show.



WFBF President Brad Olson introduces himself at the Eau Claire Farm Show reception.



WFBF's Rachel LaCount presents a workshop titled "Sustainability in Business."



A casual reception featuring Chicken Chasers chicken wings and sandwiches was enjoyed by Farm Show attendees.

Eau Claire Farm Bureau Sponsors Osseo-Fairchild FFA Delegates to Attend WFBF's FFA Farm Forum

For the first time in recent history, Eau Claire Farm Bureau sponsored three delegates to the Wisconsin FFA Farm Forum. More than 315 high school juniors and FFA advisors from across Wisconsin attended Wisconsin Farm Bureau's FFA Farm Forum in Rothschild on Feb. 15.

Osseo-Fairchild – From left: Emy Sousek, Brian Zimmerman and Graysen Stalheim



Jackson County

Jackson County Farm Bureau Sponsors Lincoln-Alma Center FFA Members to Attend FFA Farm Forum



Lincoln-Alma Center – From left: Madison Stubrud and Amara Streff.

Scan Here
to visit Gather Wisconsin

www.gatherwisconsin.com

Coloring Contest

Open to children of Farm Bureau families in Monroe County.

Mail to:

Peggy Wright

605 W. Wisconsin Street

Sparta, WI 54656

Contest deadline: Friday, June 7, 2024

Name:

Age:

Address:

Phone:



Monroe County FFA Members Attend Farm Bureau's FFA Farm Forum

Monroe County Farm Bureau sponsored two delegates each from Sparta FFA and from Cashton FFA. MCFB continues to work closely with local FFA's to promote agriculture and keeping involved.



Cashton – From left: Austin Olson, Hunter Kabat, Max Schreler and Lane Klinge

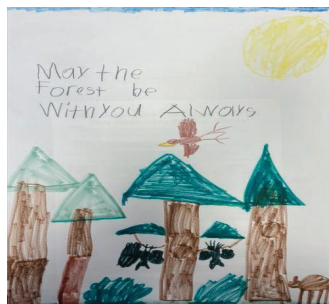


Sparta – From left: Jeannette O'Dell and Hannah Bloye

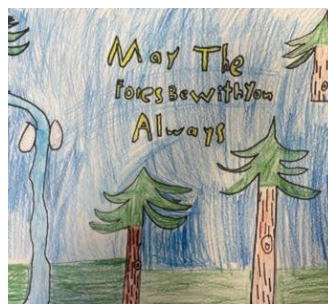
Join Wisconsin Farm Bureau on the first Wednesday of each month from 11:30 am - 12:30 pm via Zoom to lunch and learn! Upcoming topics include mental health, WFBF policy development and how to get the most out of your member benefits.
Register at <http://bit.ly/learnwithfb>

2024 Monroe County Conservation Poster Contest

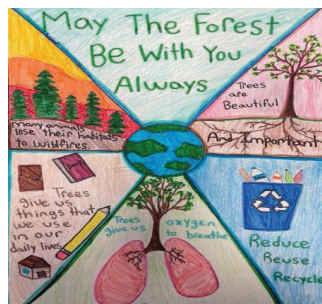
The theme for the 2024 Conservation Poster Contest was “May the Forest Be with You Always.” First place winners advanced to the area contest. Our 1st - 3rd Place winners are:



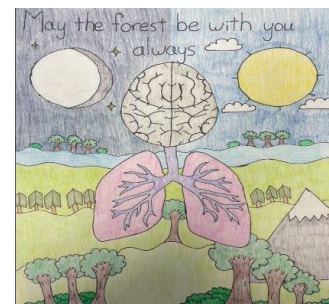
K-1st Grade: 1st Place - Ryker Flock



2nd-3rd Grade: 1st Place - Nella Ebner



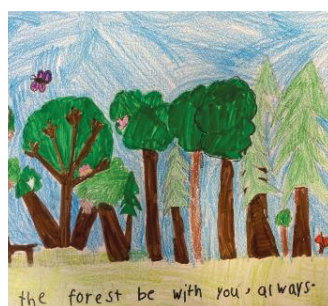
4th-6th Grade: 1st Place - Teva Ebel-Naber



7th-9th Grade: 1st Place - Kaylee Becker



K-1st Grade: 2nd Place - Rose Zastoupil



2nd-3rd Grade: 2nd Place - Violet Bloom



4th-6th Grade: 2nd Place - Gwen Clark



7th-9th Grade: 2nd Place - Ella Melby



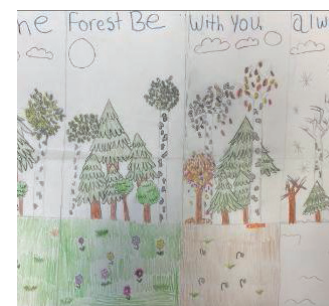
K-1st Grade: 3rd Place - Charly Heckman



2nd-3rd Grade: 3rd Place - Joanna Skofronick



4th-6th Grade: 3rd Place - Jeff Karrass



7th-9th Grade: 3rd Place - Yohanna Almqvist

Trempealeau County

Nilsestuen Selected for Inaugural WisGO Team

Kyle Nilsestuen was selected to serve on the inaugural Wisconsin Farm Bureau Federation WisGO Team. Kyle is a Board Director for Trempealeau County Farm Bureau and has served nine years.

The WisGO Team is WFBF’s first line of contact when speaking on agricultural issues. Members of this year’s team will develop a skillset to effectively interact with media representatives as well as educate and influence others on prominent issues impacting agriculture. Members will learn effective strategies to share their stories to a broad audience through multiple media platforms.

“As the trusted voice leading Wisconsin agriculture forward, Farm Bureau is excited to offer this new opportunity for members to grow their



advocacy skills,” said WFBF President Brad Olson. “This year’s WisGO team exemplifies our state’s agricultural diversity, and we look forward to helping these members grow and flourish as agriculture advocates in the coming year.”

WisGO Team members serve as official spokespersons for Farm Bureau and agriculture issues. These members will serve as influential and authoritative individuals to be called upon for media interviews, legislative testimony and social media advocacy.

Throughout the program, participants will gain a deeper understanding of agricultural issues, expand their network with fellow farmers and agriculturists across the state and be a voice for Wisconsin agriculture.

Trempealeau County Farm Bureau Helps Sponsor Arcadia Ag Day

The Arcadia Agriculture Day Committee in cooperation with the Arcadia Chamber of Commerce held their Annual Ag Day Celebration on April 6 at the Arcadia Country Club. Farmers, agribusinessmen and other supporters were treated to a breakfast buffet served by Roger Karkowski's catering crew along with the club's staff.

The event was emceed by Keith Witte of Alliance Bank who used his large background of humor to make the presentation fun and full of excitement. The Outstanding Farm Family award was bestowed on the Scott and Jason Schank



The Scott and Jason Schank families were selected as the 2024 Arcadia Outstanding Farm Families.

Families. The Schanks are a fourth-generation dairy farm that milks cows north of Arcadia on Highway 93. In attendance was Dave Schank along with wife, Charlotte, who had operated Riverview Dairy for a number of years.

Trempealeau County Farm Bureau is an event sponsor that donates their tickets to Rural Mutual Insurance agents to promote interaction of all individuals in agriculture. A big congratulations to the Ag Day committee on all the hard work!

Trempealeau Land Management Sponsors Cover Crop Cost Share

- Cover crops can be cost shared up to \$25/acre
- Trempealeau County has set a maximum of 100 acres per producer
- Must have a current NRCS 590 compliant nutrient management plan
- The land must remain in compliance with soil loss and NMP as long as land is farmed
- Priority will be given to first time applicants
- Cost share cannot be received in the same year on the same acres from

multiple sources

- If cost share application is on rented land, the landowner must sign the cost share contract, although renter can receive the payment
- DLM staff will perform a cover crop compliance check
- Cover crop may be grazed or harvested for feed
- Applications can be found on the Trempealeau County Website in Permits and Applications.

Deadline to apply is July 15, 2024

Visit: https://co.trempealeau.wi.us/departments/service_departments/departament_of_land_management/permits___applications.php

Trempealeau County Conservation Poster Contest

Students competed at county and area competitions and moved on to compete at the state competition in March at the Wisconsin Land & Water Annual Conference. The first-place posters from the state competition will represent Wisconsin at the National Association of Conservation Districts (NACD) Annual Meeting. The conservation posters are evaluated on conservation message, visual effectiveness, originality, universal appeal and individual artwork.

This year's NACD poster theme was May The Forest Be With You Always. There were five divisions in the poster contest: Grades K-1, Grades 2-3, Grades 4-5, Grades 7-9 and Grades 10-12. The contest was open to public, private and home-school students. A total of 89 posters were submitted this year in Trempealeau County. First place from each division will move on to the area competition. The poster that was first in the area competition moved onto the state competition which was held during the Annual Wisconsin Land and Water Conference, March 6-8.

Trempealeau County Competition:

K-1st Division

1. Cade Waldera – Home School

2. Jordan Amundson – Holy Family Catholic School
3. Eugene Symiczek – Holy Family Catholic School

2nd-3rd Division

1. Kayla Gonzalez – Holy Family Catholic School
2. Porter Pampuch – Whitehall Elementary
3. Evelyn Ferguson – Holy Family Catholic School

4th-6th Division

1. Huntley Ryder – Trempealeau Elementary
2. Brynn Collins – Ettrick Elementary
3. Aubrey Hogden – Ettrick Elementary

7th-9th Division

1. Lacey Bautista – Arcadia Middle School
2. Olivia Mercer – Arcadia Middle School
3. LilyAnne Dickman – Arcadia Middle School

10th-12th Division

1. Karmen Paulus – Osseo-Fairchild High School

Trempealeau County Youth Conservation Awareness Speaking Contest

Students compete at county and area competitions where winning speakers moved on to compete at the state competition in March at the Wisconsin Land and Water Annual Conference. The conservation speeches were evaluated on conservation message, originality, delivery and style.

There are 3 divisions in the speaking contest: Elementary (Grade 5-6), Junior (Grade 7-8) and Senior (Grade 9-12). The contest is open to public, private and home-school students. A total of 6 speakers participated in the Trempealeau County contest. First place from each division moved on to the area competition. The speaker that was first in the area competition moved on to the state competition which was held during the Annual Wisconsin Land and Water Conference, March 6-8.

Trempealeau County Competition:

Elementary:

1. Delilah Solberg (G.E.T. Middle School) – A Fishy Tale in Trempealeau County
2. Sophie Schaefer (Ettrick Elementary) – The Ins and Outs of Nutrient Management
3. Ella Hatleli (Ettrick Elementary) – Monarch Butterfly Habitat

Senior:

1. Brian Zimmerman (Osseo-Fairchild High School) – We Can't Grow More Soil!
2. Charlie Thompson (Osseo-Fairchild High School) – What's the buzz about? Saving our lesser known pollinators.
3. Mason Scheffer (Osseo-Fairchild High School) – Analyzing the Coexisting Qualities of Beavers and Humans



County Farm Bureaus
PO Box 5550 Madison, WI 53705

Address Service Requested

Non Profit
Organization
US Postage
PAID
Platteville, WI 53818
Permit No. 124

**This Issue Contains
Highlights for:**

Buffalo County

Eau Claire County

Jackson County

Monroe County

Trempealeau County

A New Way To Pay Your Bill

Recurring Electronic Fund Transfer

Recurring electronic payments make paying your bill easy and convenient.

- ✓ Flexible withdrawal dates; 1st - 28th of the month
- ✓ Monthly, quarterly, semi-annual or annual payment options available
- ✓ Select your payment option and date per policy to fit your budget
- ✓ Electronic delivery of your insurance documents
- ✓ No installment service fees
- ✓ Pay by bank account or credit card*

Reach out to your agent to get started
www.RuralMutual.com



* A fee in the amount of 2.75% will be charged for credit card payments on Farm and Commercial policies