



Grassroots

District 1 News

Imagine. Grow. Lead.



Jim Renn

District 1 Director

It's been a great year! Thank you so much for welcoming me to my new position as District 1 Director. There have been many new opportunities for me to learn and experience since I started.

It was great to see some of you at the WFBF Annual Meeting in the Wisconsin Dells in December. It's nice to meet others with similar interests in the state to bring home to our operations.

Some of the WFBF board members and staff, along with some Rural Mutual staff, were able to attend the American Farm Bureau Convention in Anaheim, California. The theme this year was... *Imagine. Grow. Lead.* The American Farm Bureau Convention was a great place to meet others who are involved in agriculture. Delegates from each region come together

to work on the policy that shapes our organization. Our state discussion meet winner Kristen Konder competed on the national level and represented Wisconsin well. While at the American Farm



WFBF District 1 Director Jim Renn led the district caucus meeting.

Bureau Convention, I enjoyed countless workshops and the trade show with state Farm Bureaus displaying their programs, as well as manufacturers and products. The trade show was great, and you couldn't

see it all in one day.

The general sessions were very encouraging. President Zippy Duvall really represents the American Farm Bureau well. We were very fortunate to have the U.S. Secretary of Agriculture Brooke Rollens speak. Mark my words, we will see more of her in the years to come. Very well spoken and intelligent on many levels, especially in agriculture.



Kendall Riskedal, 2025 YFA Chair, and Jim Renn, District 1 Director, pose by the WFBF sign at the YFA Conference and WFBF Annual Meeting.

We also had Council of Presidents and Ag Day at the Capitol. I sure hope you were able to get

time away from your daily routine to tell YOUR story of agriculture to the legislators. It's important to let them know what's going on in your part of the state. If not, at least introduce yourself so you can be a resource for information that they can turn to. They can't have all the knowledge. They need to hear how the decisions they make affect us in agriculture.

We have a great membership drive incentive that I hope all of you are working on. With the cash incentives through the end of March, it's a way to introduce others to Farm Bureau while earning funds for your county Farm Bureau.

There are many opportunities for you to take advantage of in the coming months in Farm Bureau. I encourage you to get involved. There are areas for all of us to Imagine, Grow and Lead.

As always, if I can be of help to your county Farm Bureau, please let me know.

SAVE THE DATE

Discussion Meet and Policy Meeting

The date has been set and location booked, now all we need is YOU! Mark your calendars and plan to attend the District 1 YFA Discussion Meet and Policy Development Meeting. Watch for more details in the next newsletter.



Date: Monday, July 13

Time:

5:30 p.m. registration | 6:00 p.m. discussion meet
6:45 p.m. buffet | 7:15 p.m. policy meeting

Location: Delafield Brewhaus Banquet Hall

Cost per person: \$30

District 1 News

Promotion and Engagement Update: New Name, Same Great Program



Ashley Schlender, District 1 Promotion and Engagement Chair

Same Initials, Same Great Purpose.

In case you missed it, one of the items that delegates at the WFBF Annual Meeting voted on was a name change for the former Promotion and Education program. Delegates voted to support the proposed new and improved name of Promotion and Engagement that was suggested by the district representatives of this committee.

You may be curious about the reason for this change. As we mark ten years of Wisconsin's Promotion and Education Program, committee members have dedicated significant effort to defining the program's mission and objectives. The focus areas for P&E are consumer engagement, grassroots education and training for members and advocacy as a trusted voice for agriculture.

The committee renamed the program from "Education" to "Engagement" to clarify its purpose, believing the new name better reflects their aim to connect consumers with farmers and encourage meaningful conversations. These interactions help farmers guide consumers in making food choices and deepen their understanding of farming practices. Opportunities for engagement can take place in a variety of locations, such as fairs, farmers' markets, grocery stores, community festivals or even directly on farms.

The committee strives to develop ideas and create training opportunities so that members can be inspired to engage with their own community members. Each time a farmer shares their story, another connection is made with someone who may be far removed from agriculture and that can have a lasting impact!

Looking for ways that you can engage with consumers? Watch the newsletter for training opportunities or reach out to help at one of our Ask a Farmer events at Wisconsin State Fair or Science on the Square. Contact me at ashleyschlender@gmail.com.

Members Speak Up

Members from District 1 attended the annual Ag Day at the Capitol on January 21. Members began their day at the Monona Terrace listening to keynote speaker Marcus Landry, a former professional basketball player who now owns and operates a farm in the Elkhorn area.

The agricultural issues that were discussed include sustainable aviation fuel tax credit, lab-grown meat labeling, Farm Bureau health plans, livestock program fees, ARPI eligibility, road weight limits, protection of farmland and more.

Prior to Ag Day at the Capitol there was a virtual legislative briefing to go through the topics that were going to be discussed. This was very helpful in preparing for Ag Day at the Capitol.

District 1 members who attended, include: Jefferson County: Libby Hafften, Steve Knoebel, Darren and Kendall Riskedal, Emma Statz. Kenosha County: Dave Daniels, Andrea Edquist. Racine County: Kayla Lois, Judy Uhlenhake. Washington County: Samantha Krueger, Carl Wolf. Waukesha County: Ryan Brueggemann, Tom Oberhaus, Jim Renn.

Additionally, prior to Ag Day at the Capitol, Libby Hafften testified in support of the Farm Bureau Health Plans. Thank you to everyone who attended to build a relationship with legislators and share their story!



Captions:

1. District 1 attendees included (from left): Emma Statz, Judy Uhlenhake, Tom Oberhaus, Kayla Lois, Andrea Edquist, Ryan Brueggemann, Samantha Krueger, Darren Riskedal, Carl Wolf, Jim Renn, Steve Knoebel, Dave Daniels and Kendall Riskedal. Not pictured: Libby Hafften.

2. Jefferson County Farm Bureau member and WisGO Team member Libby Hafften (right) testified in support of SB 450 that would allow Wisconsin Farm Bureau to offer Farm Bureau Health Plans.

YFA Update



Maryann Gudenkauf, District 1 YFA Chair

The WFBF Board of Directors appointed me to the Wisconsin Farm Bureau Young Farmer and Agriculturist Committee with my three-year term beginning at the end of the YFA Conference in December.

I am excited to represent District 1 on the YFA Committee for the next three years. I am from Watertown and a fourth-generation dairy farmer. I just recently graduated from the University of Wisconsin-Madison with a degree in dairy science. I farm alongside my parents and brother and work at Rolling Hills Dairy Producers Cooperative as a field representative covering southeast Wisconsin and northern Illinois.

The YFA Conference in December was very successful. I was happy to meet some District 1 members, see my friends from the Collegiate Farm Bureau chapter and network with other YFA members from throughout the state. We had a District 1 meeting where I listened to members on what events they would like planned in the future.

In January, some members attended the PBR Rodeo at Fiserv Forum, which was fun. I personally had never been to the rodeo, so I really had a great time!

Looking ahead, I am hoping to do laser tag in the spring. Watch upcoming newsletters and the county Facebook pages for updates.



YFA Members from District 1 enjoyed the district meeting at the YFA Conference, followed by dancing and yard games.

Presidents and Vice Presidents Gather in Madison

Three leaders in District 1 attended the annual Council of Presidents on January 20-21. Those who attended were Jefferson County vice president Ryan Hafften, Waukesha County president Tom Oberhaus, and Waukesha County vice president and District 1 Director Jim Renn.

Attendees heard from WFBF staff on a variety of topics including the county service program agreement, Volunteers for Agriculture®, managing local issues, foundation updates, having effective board meetings and a roundtable discussion. County leaders participated in roundtable discussions to learn from other counties and get ideas to bring back to their county. The Collegiate Farm Bureau leaders participated in a panel discussion to share their programs with county Farm Bureau leaders.

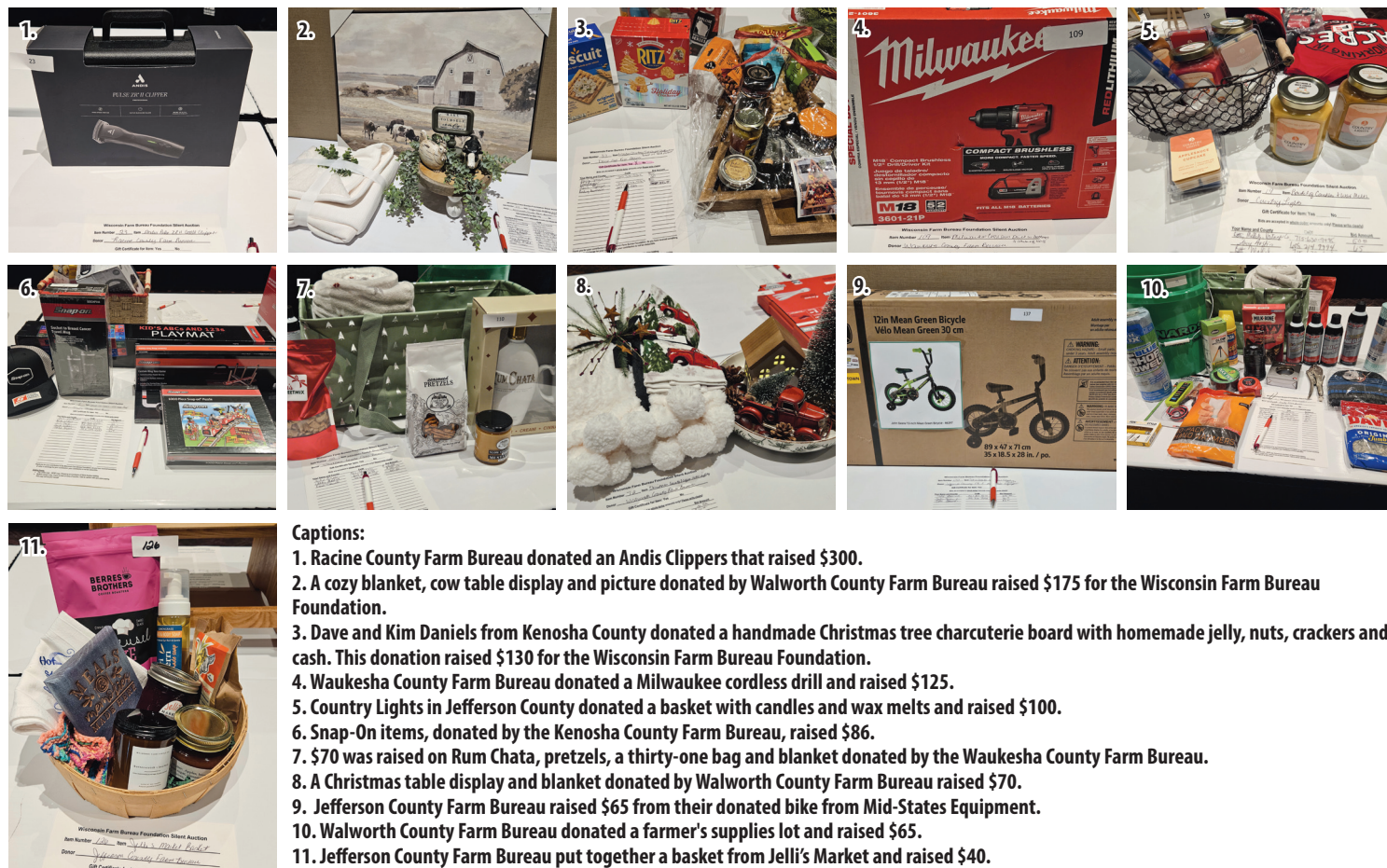


District 1 News

Silent Auction at WFBF Annual Meeting

District 1 County Farm Bureau's and members provided items for the Wisconsin Farm Bureau Foundation's silent auction at the WFBF Annual Meeting. In total, the items brought by District 1 raised more than \$1,400 for programs that the Wisconsin Farm Bureau Foundation supports.

Washington County donated two cheese, sausage and beef stick boxes and raised a total of \$115 for the Wisconsin Farm Bureau Foundation with their donation.



- Captions:**
1. Racine County Farm Bureau donated an Andis Clippers that raised \$300.
 2. A cozy blanket, cow table display and picture donated by Walworth County Farm Bureau raised \$175 for the Wisconsin Farm Bureau Foundation.
 3. Dave and Kim Daniels from Kenosha County donated a handmade Christmas tree charcuterie board with homemade jelly, nuts, crackers and cash. This donation raised \$130 for the Wisconsin Farm Bureau Foundation.
 4. Waukesha County Farm Bureau donated a Milwaukee cordless drill and raised \$125.
 5. Country Lights in Jefferson County donated a basket with candles and wax melts and raised \$100.
 6. Snap-On items, donated by the Kenosha County Farm Bureau, raised \$86.
 7. \$70 was raised on Rum Chata, pretzels, a thirty-one bag and blanket donated by the Waukesha County Farm Bureau.
 8. A Christmas table display and blanket donated by Walworth County Farm Bureau raised \$70.
 9. Jefferson County Farm Bureau raised \$65 from their donated bike from Mid-States Equipment.
 10. Walworth County Farm Bureau donated a farmer's supplies lot and raised \$65.
 11. Jefferson County Farm Bureau put together a basket from Jelli's Market and raised \$40.

LEADERSHIP INSTITUTE

Grow your voice.
Lead your community.
Shape the future of agriculture.

ABOUT THE PROGRAM :

The Wisconsin Farm Bureau Leadership Institute is a year-long, hands-on agricultural leadership experience that equips Farm Bureau members with the skills, confidence, and connections to lead boldly in their farms, businesses, and communities.

WHAT YOU'LL GAIN:

- ✓ Expanded professional network
- ✓ Deeper understanding of ag issues
- ✓ Stronger leadership and communication skills
- ✓ Personal growth

“ While I don’t come from a traditional farming background, being part of the Leadership Institute changed so much for me. I would encourage anyone to apply! It’s an investment not only in your career, but in the kind of leader you want to become. The program offers support, challenge, and meaningful opportunities for reflection, with a strong emphasis on community.”

Katie Koepfel
Manitowoc County

WE ARE PROUDLY supported by Foundation

APPLICATION TIMELINE:

- 📍 Application deadline is June 15
- 🌐 Apply at <https://bit.ly/fbleader27>

Leaders Attend WFBF Annual Meeting



Ashley Schlender facilitated a Farm Camp Roundtable for attendees at the WFBF/Annual Meeting.



Dan Schmocker, Tony Schadt and Eugene Mess network at the WFBF Annual Meeting.



Randy Mitchell and Mark Groose enjoyed playing BINGO.



Jefferson County filled a table at BINGO. Pictured (clockwise): Tony and Karen Schadt, Mary and Eugene Mess, Dawn Jones, Dan and Betty Schmocker.



The Jefferson County delegates included, (clockwise) Mark Groose, Randy Mitchell, Darren Riskedal, Tony Schadt, Eugene Mess, Dan Schmocker, Ashley Schlender, Steve Jones.

Something Special from Jefferson County Event Scheduled

Ashley Schlender



Join the members of Jefferson County Farm Bureau on Saturday, March 21 from 2:00 p.m. to 4:00 p.m. at Aztalan Inn Bar & Grill for an event to showcase Jefferson County farm products and producers! The day's events include displays and samples from local farms and businesses, a silent auction filled with locally made products and a meat raffle featuring local meats to raise funds for scholarships and agriculture education programs. For additional details, visit the Jefferson County Farm Bureau Facebook page or contact Ashley Schlender at 920.253.6329.

Fair Food Stand Update

Lindsay Baneck

Thank you to everyone who helped with the joint effort between Jefferson County Farm Bureau and the Jefferson County 4-H association with the food stand in the activity center at the 2025 Jefferson County Fair. Money raised from the food stand went toward scholarships for local youth in agriculture. This was our first year back at the fair in a few years and our first time partnering with Jefferson County 4-H. It was a learning experience, but we are happy to report that we will be working together again for the 2026 Jefferson County Fair. If you are interested in helping with the food stand again, please contact Lindsay Baneck, Ashley Schlender or Melissa Gross. We are looking for volunteers of all ages every day of the fair, starting on Tuesday, July 7 until Sunday, July 12. Thank you again for your help in 2025 and we look forward to 2026.

Scholarships Due April 1

Ashley Schlender

Jefferson County Farm Bureau is offering scholarships to both graduating high school seniors and current post-secondary students. Applicants or their parents must be current paid members of Jefferson County Farm Bureau. Upon being selected for a scholarship, the recipient must volunteer with the Farm Bureau at the Jefferson County Fair and provide proof of 2.5 GPA or higher upon completion of the first semester. Over the course of the recipient's post-secondary education, the recipient may be awarded two scholarships from the Jefferson County Farm Bureau. The completed application form, along with a 250-word essay, two letters of recommendation and a copy of your current grade transcript is due by April 1. The scholarship application can be found on the Jefferson County Farm Bureau website wfbf.com/about/counties/jefferson/.

Donation Made to Christmas Neighbors Program

Melissa Gross

In December, the Board of Directors "adopted" a family from the Fort Atkinson area through the Jefferson County Christmas Neighbors program. Gifts were purchased for a child as well as the adults. All the fixings for a holiday meal were also provided.

In 1952, a gentleman by the name of Clarence "Pop" Wendt worked as a Probation Officer in Jefferson County. Sadly, his job took him into a great deal of homes where far too many children would go without Christmas gifts and other necessities because of their families' hardships.

Pop made it his personal mission to change that for as many children as he possibly could! He orchestrated his first toy drive by contacting the Jefferson County Social Service workers. They helped him collect and distribute toys for as many children as their funds would allow.

Initially, this program was known as "The Pop Wendt Program". While the goal is the same, more than 60 years later, Pop Wendt's mission is now carried on as the Jefferson County Christmas Neighbors. Each holiday season, they serve hundreds of families and nearly 2,000 children throughout the Jefferson County area!

Jefferson County

wfbf.com/about/counties/jefferson
JeffersonCountyFarmBureau

Jefferson County YFA Leads Boldly

Jefferson County will continue to be well represented on the WFBF YFA Committee as Darren and Kendall have completed their three-year term and Maryann Gudenkauf has been appointed to serve a three-year term on the WFBF YFA Committee.

Those who attended the YFA Conference from Jefferson County include Eric, Lindsay, Tatum and Landon Baneck, Carl Ehrke, Maryann Gudenkauf,

Ryan, Libby and Jace Hafften, Jacob and Emily Mathias, Darren and Kendall Riskedal, and Emma Statz. In addition, Jefferson County members from UW-Madison included Drew Dettmann and Olivia Urtech.

Members who attended the YFA Conference heard from keynote speakers, enjoyed time to network with members from throughout the state and enjoyed workshops.



Captions:

1. YFA Committee Chair Kendall Riskedal provided her retiring address at the YFA Conference welcome dinner.
2. Attendees were encouraged to dress for the New Year, wearing glitz and glam, for a fun night of dancing, yard games and more. Pictured (from left): new District 3 YFA Committee member Molly Hendrickson, outgoing District 3 YFA Committee member

Morgan Lobbell and outgoing District 1 YFA Committee members Kendall and Darren Riskedal.

3. Members attended the Friday night district meeting. Those from Jefferson County include (from left): Emily and Jacob Mathias, Libby Hafften, Carl Ehrke, Lindsay Baneck, Maryann Gudenkauf, Kendall and Darren Riskedal.

Kenosha County

wfbf.com/about/counties/kenosha
KenoshaCountyFarmBureau

YFA Conference and WFBF Annual Meeting Success

Andrea Edquist

This year's YFA Conference was a blast as always, kicking off on Friday with a fun tailgate party, district meetings and a New Year's themed reception. It was great reconnecting with YFA members I met at the conference over the years and even making some new connections.

Participating in the YFA Discussion Meet is always a highlight of the conference for me. I enjoy getting to discuss important issues in agriculture and ways we, as Farm Bureau members, can create real world solutions. This year I was super excited to make it to the semifinal round for the first time!

Overall, it was another fun weekend of connecting, learning, and growing as a young farmer.



Captions:

1. Siblings Ryan and Andrea Edquist attended the YFA Conference.
2. Andrea Edquist was in the YFA Discussion Meet semifinals.
3. Delegate Dave Daniels spoke during the resolutions session.
4. Dave and Kim Daniels attended the Farm Bureau Proud Banquet, which is reserved for those who sign up five or more new members.

5. Kenosha County members (from left): Kim and Kevin Muhlenbeck, Kim and Dave Daniels, Megan and Wes Hawkins, Ryan Edquist, Andrea Edquist.

6. Kenosha County delegates include Ryan Edquist, Wes Hawkins and Dave Daniels.

7. Ryan Edquist, Dave Daniels and Wes Hawkins served as delegates.

Kenosha County

wfbf.com/about/counties/kenosha
KenoshaCountyFarmBureau

Two Scholarships Available

Kim Muhlenbeck

Kenosha County Farm Bureau offers two scholarships to members' families, (associate or voting) of Kenosha County Farm Bureau. We offer \$200 for technical college students, \$300 for Farm and Industry Short Course or \$500 for an individual attending a 4-year college. The application, along with your goals, two letters of recommendation and a current photo are due by May 1, 2026. Find the application on our website wfbf.com/about/counties/kenosha/



Milwaukee County

wfbf.com/about/counties/milwaukee

Milwaukee County Members Attend YFA Conference and WFBF Annual Meeting



Jennifer Hinkel and Adam Hock attended the YFA Conference and Friday night district meeting.



Jennifer Hinkel did a great job representing Milwaukee County and District 11 in the YFA Discussion Meet.



Steve and Judy Gyuro enjoyed their first time attending the WFBF Annual Meeting. Steve served as delegate for Milwaukee County Farm Bureau and sat on the delegate floor during the resolutions session.



Steve and Judy Gyuro enjoyed the night playing BINGO.

River Trail School Awarded Teacher of the Year

Wisconsin Agriculture in the Classroom and the Wisconsin Farm Bureau Foundation have recognized educators who excel in promoting agricultural literacy through the Outstanding Teacher Award for 22 years.

At the WFBF Annual Meeting, the 2024 Outstanding Teacher Award was presented to Mr. Josh Gonzalez, second-grade teacher at River Trail School of Agricultural Sciences in the Milwaukee Public Schools.

Under his leadership, River Trail School became Milwaukee Public Schools' first specialty agriculture school, serving pre-kindergarten through eighth grade. Each grade level participates in hands-on agricultural activities, from tending pollinator gardens and hydroponics towers to caring for chickens and operating a full composting program. The school's "food forest"—a two-acre orchard featuring Asian pears, chestnuts and hazelnuts—has drawn significant attention.

Mr. Gonzalez also collaborates with the district's agriculture high school, creating a K-12 pathway to explore agricultural degrees and careers. He has shared his expertise and has been recognized widely for his commitment to agricultural education.

His colleagues describe him as a tireless advocate who secures funding, builds resources, and inspires those around him. He has expanded beyond



1b

Thank You
We appreciate your support!

Rural Mutual

FS

GROWMARK

Farm Bureau

the classroom experiences such as field trips to the Wisconsin Farm Discovery Center and Milwaukee Vincent High School for Agricultural Sciences.

Mr. Gonzalez currently serves as a Wisconsin Agriculture in the Classroom Educator Ambassador, helping shape the program's direction while sharing opportunities with educators across the state.

Josh is also Wisconsin's nominee for the 2026 National Excellence in Teaching About Agriculture Award,

which will be announced early this year.

Congratulations to Mr. Josh Gonzalez on being the 2024 Outstanding Teacher Award recipient.

Captions:

1. Josh Gonzalez and his wife Lizzy pose for a photo at the WFBF Annual Meeting
2. Josh Gonzalez accepted the award from Wisconsin Agriculture in the Classroom Coordinator Beth Schaefer.

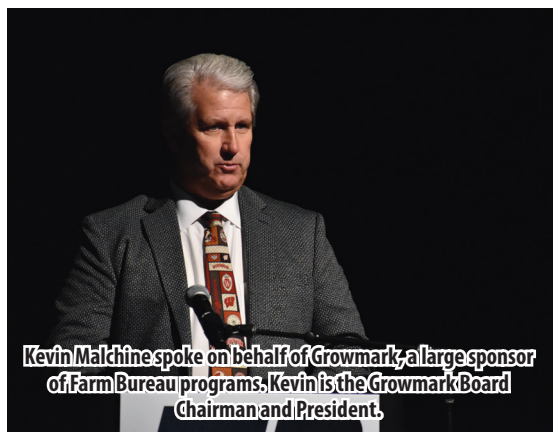
Members Attend YFA Conference and WFBF Annual Meeting



YFA members attended the district meeting on Friday. Pictured (from left): Joe Mealy, Cheyenne Vyvyan-Kunz, Kallie Coates, Devin Coates holding Kane, Shannon Roberts, Cade Peterson.



As YFA Discussion Meet winner last year, Kallie Coates was the moderator for this year's YFA Discussion Meet Finals.



Kevin Malchine spoke on behalf of Growmark, a large sponsor of Farm Bureau programs. Kevin is the Growmark Board Chairman and President.



Devin Coates, Traci Himebauch and Jim Waldron served as delegates for Racine County Farm Bureau.

Scholarships Available

Tasha Hegemann

Racine County Farm Bureau is offering up to four \$1,000 scholarships to high school seniors or students in continuing education at a four-year college. Students in a 4-year college are able to apply for the scholarship again even if they have previously been awarded the scholarship. Some requirements include: parents, grandparents or recipients must be a member of the Racine County Farm Bureau for at least one year before applying, letters of reference, a transcript from their school and a recent picture. For full application and details students can visit the Racine County Farm Bureau website wfbf.com/about/counties/racine. Our goal this year is to reach three new high schools in addition to the one from previous years. The number of applicants last year exceeded our expectations and we look forward to receiving and reviewing the new scholarship applications in the spring. Apply today! The application deadline is April 1.

Cream Puff Stand Volunteers Mark Your Calendars

Judy Uhlenhake

We are thinking of warmer temperatures and hope you are making plans to help us in the cream puff stand for the best week of the year. The Racine County Fair is scheduled for July 29-August 2 and we are looking for your help to make cream puffs, shakes and "Moocachinos." We also serve eclairs, milk and coffee. The stand is our major fundraiser and a good way to promote agriculture in Racine County. Money raised is used for scholarships, library grants, agriculture promotions and community support. If you are interested in getting involved with the cream puff stand contact Judy Uhlenhake at 262.949.1168.

Agriculture Ambassador Update

Ashley Schaal, 2025-2026 Agriculture Ambassador

Serving as a Racine County Agriculture Ambassador has continued to be a great experience, especially during the busy holiday season. Over the past few months, I have enjoyed staying involved in community events and helping promote agriculture in meaningful ways. Since my last update, I had the opportunity to attend the YFA bags tournament at County Line Hall, which was a great way to connect with others who are passionate about agriculture and support local involvement in the industry. I also had the chance to speak to a local 4-H group, where I shared what it means to be an agriculture ambassador and talked about fun facts in Racine agriculture. It was rewarding to encourage younger members and answer their questions about agriculture and leadership. Looking ahead, I am excited to continue participating in outreach events, school and youth programs, and community activities throughout the county. I look forward to more opportunities to represent Racine County agriculture and share the story of our farmers and agricultural industry. I am grateful for the chance to serve as an Agriculture Ambassador this year. Make sure to follow @racinecountyag on Facebook and Instagram!



Bags Tournament Held

Joe Mealy

The YFA Committee held their 5th annual bags tournament on January 10 at County Line Hall. Twenty-five teams competed and there was prize money for the top 3 teams. Thank you to the Union Grove FFA for selling food during the tournament. During the event, we also had a gun raffle and silent auction. We had a great turnout again this year and we look forward to planning next year's event.



Racine County

wfbf.com/about/counties/racine
RacineCountyFarmBureau

Interested In Becoming A Featured Farm?!



**Racine County
Farm Bureau®**

Featured farms are farms throughout Racine County that tell their family's history. Racine County Farm Bureau features 3 farms each year during the fair. If you are interested in becoming a featured farm please scan the QR code and fill out the form!



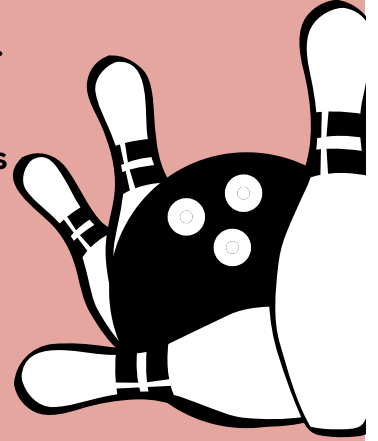
Or email t.himebauch@hotmail.com

BOWLING SOCIAL

Sunday, March 8 | 12:00 p.m.
River City Lanes | Waterford

Bring your family and friends for an afternoon of **FREE** pizza, soda and bowling!

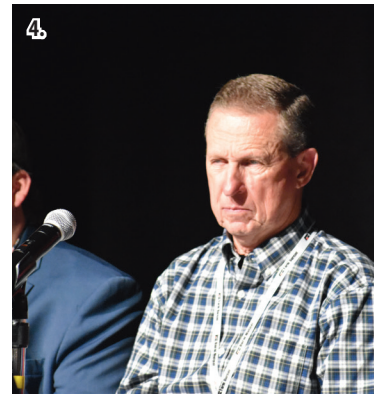
Questions? Contact Judy Uhlenhake at 262.949.1168. RSVPs not required.



Walworth County

wfbf.com/about/counties/walworth
Walworth County Farm Bureau

Members Gather at Kalahari



Captions:

1. UW-River Falls students Amy Jentges from Ozaukee County and Alyssa Schauer from Walworth County attended the District 1 meeting at the YFA Conference.
2. Ann Brost on stage with WFBF President Brad Olson for graduating from the Leadership Institute.
3. Ann Brost graduated from the Leadership Institute at the WFBF Annual Meeting. The class will now go to Washington, D.C. in March.
4. Mark Polyock is part of the WFBF Policy Development Committee.
5. Members Marleen Adams, Derrick Papcke and Rick Adams stop for a photo in the silent auction.
6. Walworth County Farm Bureau delegates, who were elected at the Walworth County Farm Bureau Annual Meeting, included (from left): Rick Adams, Ann Brost, Dan Nettesheim, Rick Thelen and Mark Polyock.
7. Rick Thelen, Mark Polyock, Ann Brost and Marleen Adams enjoy the live auction and music.

Walworth County

wfbf.com/about/counties/walworth
Walworth County Farm Bureau

Three \$500 Scholarships Available

Rick Thelen

Walworth County Farm Bureau has three scholarships available to students studying an agriculture-related field, valued at \$500 each. New this year: once a recipient receives the scholarship, they are eligible to receive \$500 each year for their entire college education as long as their major remains in agriculture, volunteer hours are met and grades are submitted each year for a total of \$2,000 from Walworth County Farm Bureau.

Scholarship Qualifications:

- Recipient must volunteer a shift at one of the Walworth County Farm Bureau Events – Dairy Breakfast, Rib Fest, Ice Cream Tent at the Walworth County Fair.
- Proof of 2.5 GPA upon completion of first semester.
- Parents do not need to be Walworth County Farm Bureau members; however, priority will be given to students of Walworth County Farm Bureau members.

The Walworth County Farm Bureau Scholarship Committee will select the scholarship recipients based on their application, essay, letters of recommendation and grade transcripts.

The scholarship application can be found on the Walworth County Farm Bureau website wfbf.com/about/counties/walworth/. If you have any questions about the scholarship application, contact Rick Thelen at 262.379.9479.

All applications are due by April 30.

Dairy Breakfast Date Set

Ann Brost

We look forward to seeing you for the Dairy Breakfast on Saturday, June 13. It will be held at Loudenbeck Family Farms Dairy Goats in Lake Geneva.

We are looking for volunteers for Friday, June 12 at 10:00 a.m., lunch will be provided, along with volunteers on Saturday, June 13.

Watch our Facebook page for more information on how you can volunteer.

Questions? Contact Ann Brost at 414.828.7223.



Washington County

wfbf.com/about/counties/washington
WashingtonCounty,WI.FarmBureau

Manure Pit Rescue Training Held

Ron Naab

On January 17, forty-five firefighters, EMS personnel and farmers gathered at the Allenton Fire Station to participate in a very unique Manure Pit Rescue Training. The program was presented by Brian Freese of the National Educational Center for Agriculture Safety. This two-session training was sponsored by the Washington County Farm Bureau along with the Kewaskum FFA Alumni, Washington County Fire Training Officers Association and the Dodge County Firefighters Association. Firefighters and EMS personnel came from Dane, Marinette, Waukesha, Dodge, Sheboygan and Washington Counties.

Brian presented a very informative classroom session which was followed by hands-on training to recover mannequins from a tank prop.

As farms have grown in size, the use of large volume pits to hold cattle and hog waste have grown as well. There are enhanced dangers with manure pits in that they give off hazardous gases, there are accessibility challenges, and complexities with using mechanical equipment in confined spaces.

This training addressed procedures for safely entering the confined space of a manure pit to work around the area. Along with first responders learning



how to perform rescue operations in low oxygen situations, including the importance of air quality monitoring before, during and after rescue, proper use of self-contained breathing apparatus (SCBA), harnessing, rope rigging for below-grade rescue and the use of a rescue tripod. Entry into the "trailer prop" was accomplished through an access port at the top of the trailer. This port is approximately the same size as

most access holes are found in reality. Mr. Freese emphasized the importance that any time

someone is going to enter a confined space there needs to be TWO people involved, one who goes in safely, and one who stays above to monitor. Secondly, whenever entering a

confined space, that individual needs to wear a harness and be attached to a rope. The rope gives, if needed, rescuers a quicker opportunity to locate the trapped person. Students had the opportunity to work through several evolutions in various roles with the one-of-a-kind training prop.

There was discussion of the three serious gases that can cause death of the farm worker and of the first responder. Those gases are Methane [flammable/explosive], Hydrogen Sulfide [deadly at 100 parts per 1,000,000] and carbon monoxide. It was emphasized that farmers and first responders need to be aware of the dangers of these gases. Every year there are reports of workers and many times family members who are overcome by hydrogen sulfide. These gases are not only in confined spaces but are also found in the general area of pits where liquid manure is stored. Due to the chemical makeup of all three gases, they are heavier than ambient air; with high humidity times or fog these gases tend to spread out.

Mr. Freese expressed that 4-gas meters must be utilized throughout the rescue. He also told those in the classes that it is important for farmers and their employers that they consider purchasing monitors. There are electronic meters available that farmstead operators can purchase to monitor the gases at their workplace.



YFA Conference and WFBF Annual Meeting Well Attended by Members



Captions:

1. Young farmers posed for a photo at the district meeting. Front row, from left: Kaitlyn Wuebben, Leah Weninger, Tiffany Falk, Samantha Krueger, Katie Ziemer, Kennedy Wuebben. Back row, from left: Justin Persha, Tyler Hetebrueg, Paul Ziemer, John Falk.
2. During the Saturday morning brunch, keynote speaker Emily Reuschel had an interactive speech and John Falk volunteered to speak.
3. Samantha Krueger spoke during the resolutions session.

4. Greg and Ellen Goeller enjoyed the ugly sweater portion of the program.
5. Washington County attendees gathers by the WFBF sign for a photo.
6. Washington County delegates: (seated, from left) Samantha Krueger, John Falk, Tyler Hetebrueg, Ken Falk, (standing, from left) Greg Goeller and Allen Dornacker.

WASHINGTON COUNTY & OZAUKEE FARM BUREAU PRESENT

YOUNG FARMERS DANCE & SPRING FLING

ON
MARCH 28

AT
FILLMORE TURNER HALL

FEATURING
JUDSON BROWN BAND

8:00PM - 11:30PM

DOORS OPEN AT 7PM
\$10 ADMISSION

DRINKS SERVED ALL NIGHT

Scholarship Applications Due in April

Ken Falk, Scholarship Committee Chair

Up to four \$1,000 scholarships will be available to students who will be furthering in higher or continued education to those who meet the qualifications listed below. Recipients must also work a 4-hour shift in the food stand during the Washington County Fair.

The application is available on the Washington County Farm Bureau website <https://wfbf.com/about/counties/washington/>.

Completed application, essay and two reference letters are due to the Scholarship Committee by Friday, April 17.

Qualifications

- Scholarships will only be awarded to students of families who have Washington County Farm Bureau membership. Applicants 22 years of age or older must have their own membership.
- The scholarship may be used at any accredited technical school or university for continuing education in agriculture or an agricultural-related field. Considerations will be given to non-agricultural-field-related applications; however, preference will be given to those that are agriculturally related.
- The Scholarship Committee will base their selection on extracurricular activities, two letters of recommendation, transcript of high school grades (seniors) or higher or continued education grades (if applicable).
- Payment of scholarships will be made to the recipient(s) after fall semester grades are received, showing a 2.5 (C+) grade point average or better.

Reminder, applications due to the Scholarship Committee by Friday, April 17.



Washington County

wfbf.com/about/counties/washington
WashingtonCounty.WI.FarmBureau

County Fair Stand Update

Tyler Hetebrueg, Fair Food Stand Co-Chair

Operating the food stand at the county fair is the primary source of fundraising for Washington County Farm Bureau. Money raised supports our agriculture in the classroom program, young farmer and agriculturist program, scholarships and more. The stand is over 25 years old and is in need of expansion and upgrades. We are currently looking for donations to help with the improvements.

Any business or individual who donates \$5,000 or more will be asked to provide a logo to create a sign to be prominently on the building. All donors will be invited and recognized at the ribbon-cutting event and at the county annual meeting banquet.

You can find the donation form on our website at wfbf.com/about/counties/washington. County fair will be here before we know it. Please mark your calendars for Tuesday, July 21 to Sunday, July 26 and plan to volunteer in our stand.

We would like to thank our volunteers who help year after year. We appreciate your dedication to our food stand; our success is because of you. This year, we are looking for a new individual to help with scheduling. If you are interested, please let me know at 262.355.5994.

More information about volunteering will be in the next newsletter.

Farm Safety Program

Allen Dornaker, Washington County Farm Bureau Membership Chair

The registration form is available on the Washington County Farm Bureau website for this year's Farm Safety Program. Participants must be able to attend all three sessions – March 21, April 11 and April 18. The cost is \$50 per participant and includes snacks, lunch and refreshments.

Participants will hear from farmers and agriculture professionals about being smart and safe on the farm. They will learn about a variety of topics including working with animals, operating on public roads, skid loaders, chainsaw safety and more.

Registrations are due by March 15, 2026 and parent involvement is encouraged.

Membership Incentives Approved

Allen Dornaker, Washington County Farm Bureau Farm Safety Chair

The membership year is October 1, 2025 through September 30, 2026.

Any Washington County Farm Bureau volunteer membership worker signing a new voting member will receive \$20 for each new voting member signed. Also, if a Farm Bureau volunteer signs five new voting members, they will receive a one-night stay at the WFBF Annual Meeting along with the registration cost. Those who sign ten or more new voting members receive a two-night stay at the WFBF Annual Meeting including the registration cost. If you are unable to attend the WFBF Annual Meeting, you will receive a \$100 VISA gift card.

The Rural Mutual Insurance agents who have office space in our building will also receive \$20 for every new voting member signed for Washington County Farm Bureau.

The membership dues are \$65 per year and membership applications and the listing of member benefits can be found on the Wisconsin Farm Bureau Federation website, wfbf.com.

Thank you to the volunteers and Rural Mutual Insurance agents for their continued help in achieving our membership goals.



Waukesha County

wfbf.com/about/counties/waukesha
WaukeshaCountyFarmBureau

Classroom on the Farm

Brittany Renn Gerrits

The Waukesha County Farm Bureau is looking forward to hosting fourth-grade students on the farm again this year! The Classroom on the Farm is scheduled for Friday, May 8 at Cozy Nook Farm in Waukesha.

The event will allow students and teachers to take a free tour to learn all about dairy farms. Students will be escorted around the farm for a one-hour tour covering milking, dairy cow housing, calf raising and crop growing. Tour times start every half hour from 10:00 a.m. until 1:30 p.m. Fifty students can be accommodated per time slot. The event will be held rain or shine; students should dress appropriately. Teachers must reply by April 1 to secure their ideal tour time.

Contact Brittany Renn Gerrits with any questions 414.801.4536 or email brittren11@gmail.com.

Delegates Attend WFBF Annual Meeting



Captions:

1. Dave Morris, Chris Mommaerts, Tom Oberhaus and Ken Rosenow represented Waukesha County as delegates.
2. Chris Mommaerts, Brad Audley and Dave Morris enjoy a relaxing afternoon watching the Packer game.
3. Jim and Kari Renn attend the Farm Bureau Proud Banquet in recognition for signing up more than five new Farm Bureau.

 **County Farm Bureaus**
PO Box 5550 Madison, WI 53705

Address Service Requested

Non Profit
Organization
US Postage
PAID
Platteville, WI 53818
Permit No. 124

**This Issue Contains
Highlights for:**

- Jefferson County
- Kenosha County
- Milwaukee County
- Racine County
- Walworth County
- Washington County
- Waukesha County



WISCONSIN FARM TECHNOLOGY DAYS
GENERATIONS OF PROGRESS

THANK YOU CLINTON FARMS!
*Rural Mutual Insurance
customers and Wisconsin Farm
Technology Days host*

TRUSTED BY WISCONSIN FARMERS.

The Clinton family trusts Rural Mutual Insurance to protect what matters most.

See why so many Wisconsin farmers do the same. Learn more about our customized coverage designed specifically for farm and rural needs.

 **Rural Mutual**
Insurance Company

**CONNECT
WITH YOUR
LOCAL AGENT**



Home | Auto | Farm | Business | Life

RuralMutual.com    